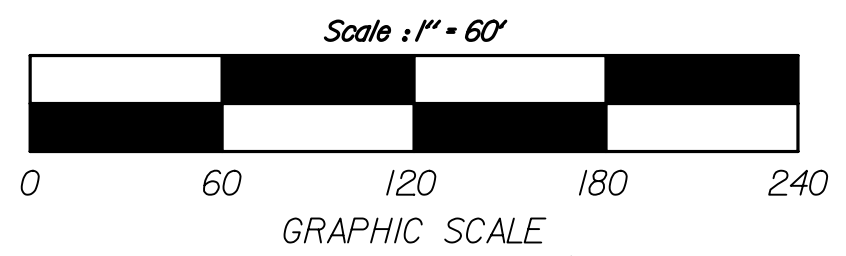
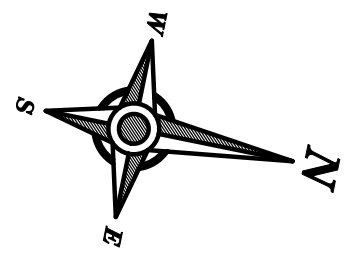


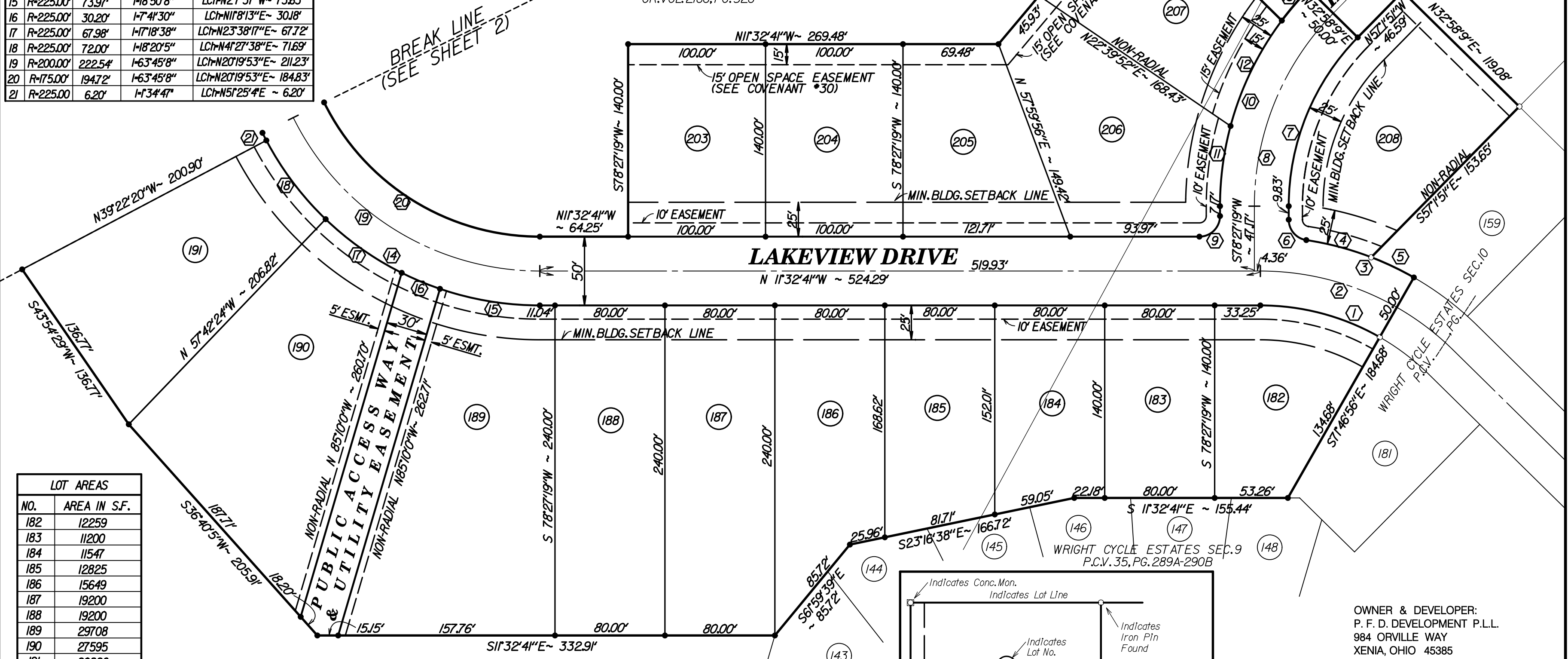
CURVE DATA				
NO.	RAD.	ARC.L.	DELTA	CHORD
1	R=175.00'	90.90'	1-29°45'45"	LCH-N 3°20'12"E ~ 89.89'
2	R=200.00'	103.89'	1-29°45'45"	LCH-N 3°20'12"E ~ 102.73'
3	R=225.00'	83.34'	1-21°3'23"	LCH-N 7°36'23"E ~ 82.87'
4	R=225.00'	49.00'	1-12°28'46"	LCH-N 3°14'4"E ~ 48.91'
5	R=225.00'	34.34'	1-8°44'38"	LCH-N 13°50'45"E ~ 34.30'
6	R=15.00'	21.33'	1-8°27'38"	LCH-S 37°43'30"W ~ 19.57'
7	R=175.00'	135.96'	1-44°30'50"	LCH-S 79°17'16"E ~ 132.57'
8	R=200.00'	155.38'	1-44°30'50"	LCH-S 79°17'16"E ~ 151.50'
9	R=15.00'	23.56'	1-90°0'0"	LCH-S 56°32'4"E ~ 21.21'
10	R=225.00'	174.81'	1-44°30'50"	LCH-S 79°17'16"E ~ 170.44'
11	R=225.00'	58.95'	1-15°0'40"	LCH-N 85°57'39"E ~ 58.78'
12	R=225.00'	85.77'	1-2°50'26"	LCH-S 75°36'48"E ~ 85.25'
13	R=225.00'	30.09'	1-7°39'44"	LCH-N 60°51'43"W ~ 30.07'
14	R=225.00'	250.35'	1-6°3'45"8"	LCH-N 20°19'53"E ~ 237.64'
15	R=225.00'	73.97'	1-18°50'8"	LCH-N 27°37"W ~ 73.63'
16	R=225.00'	30.20'	1-7°41'30"	LCH-N 118°13"E ~ 30.18'
17	R=225.00'	67.98'	1-17°18'38"	LCH-N 23°38'17"E ~ 67.72'
18	R=225.00'	72.00'	1-18°20'5"	LCH-N 41°27'38"E ~ 71.69'
19	R=200.00'	222.54'	1-6°3'45"8"	LCH-N 20°19'53"E ~ 211.23'
20	R=175.00'	194.72'	1-6°3'45"8"	LCH-N 20°19'53"E ~ 184.83'
21	R=225.00'	6.20'	1-7°34'47"	LCH-N 51°25'4"E ~ 6.20'



RECORD PLAN
WRIGHT CYCLE ESTATES
SECTION ELEVEN
 A PLANNED UNIT DEVELOPMENT
 CONTAINING 12.352 ACRES
 LOCATED IN MILITARY SURVEY NO. 2263 & 2264
 CITY OF XENIA - GREENE COUNTY, OHIO
 27 LOTS

WRIGHT CYCLE ESTATES SEC.5
 P.C.V. 34, PG.580B-582A

CITY OF XENIA
 OR.VOL. 2166, PG. 526



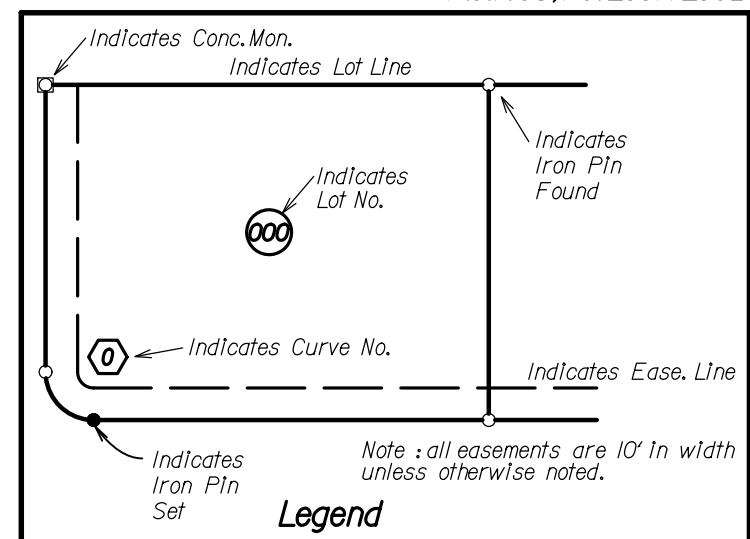
LOT AREAS	
NO.	AREA IN S.F.
182	12259
183	11200
184	11547
185	12825
186	15649
187	19200
188	19200
189	29708
190	27595
191	20826
203	14000
204	14000
205	13383
206	18288
207	15034
208	18272
PAW	7944



CERTIFICATION:
 I hereby certify that this is a true and complete survey made under my supervision. Iron pins will be set at all lot corners upon completion of construction. Curve distances are measured on the arc.

Ralph D. Amos, Professional Surveyor
 State of Ohio no. 5787

BEARING BASIS:
 WRIGHT CYCLE ESTATES
 SECTION ONE
 PLAT CAB.VOL. 30
 PGS. 319A-320B



OWNER & DEVELOPER:
 P. F. D. DEVELOPMENT P.L.L.
 984 ORVILLE WAY
 XENIA, OHIO 45385
 PHONE : (937)-376-9113

Prepared By: **SCHAEFFER, AMOS & HUGHES, LLC** SHEET 1 of 5

SCHAEFFER, AMOS & HUGHES, LLC
 ENGINEERS SURVEYORS
 1253-G Lyons Road Dayton, Ohio 45458 Tel: (937) 434-5104