

PART OF 334.883 ACRES
P.F.D.DEVELOPMENT P.L.L.
O.R.VOL.967, PG.251
O.R.VOL.967, PG.255

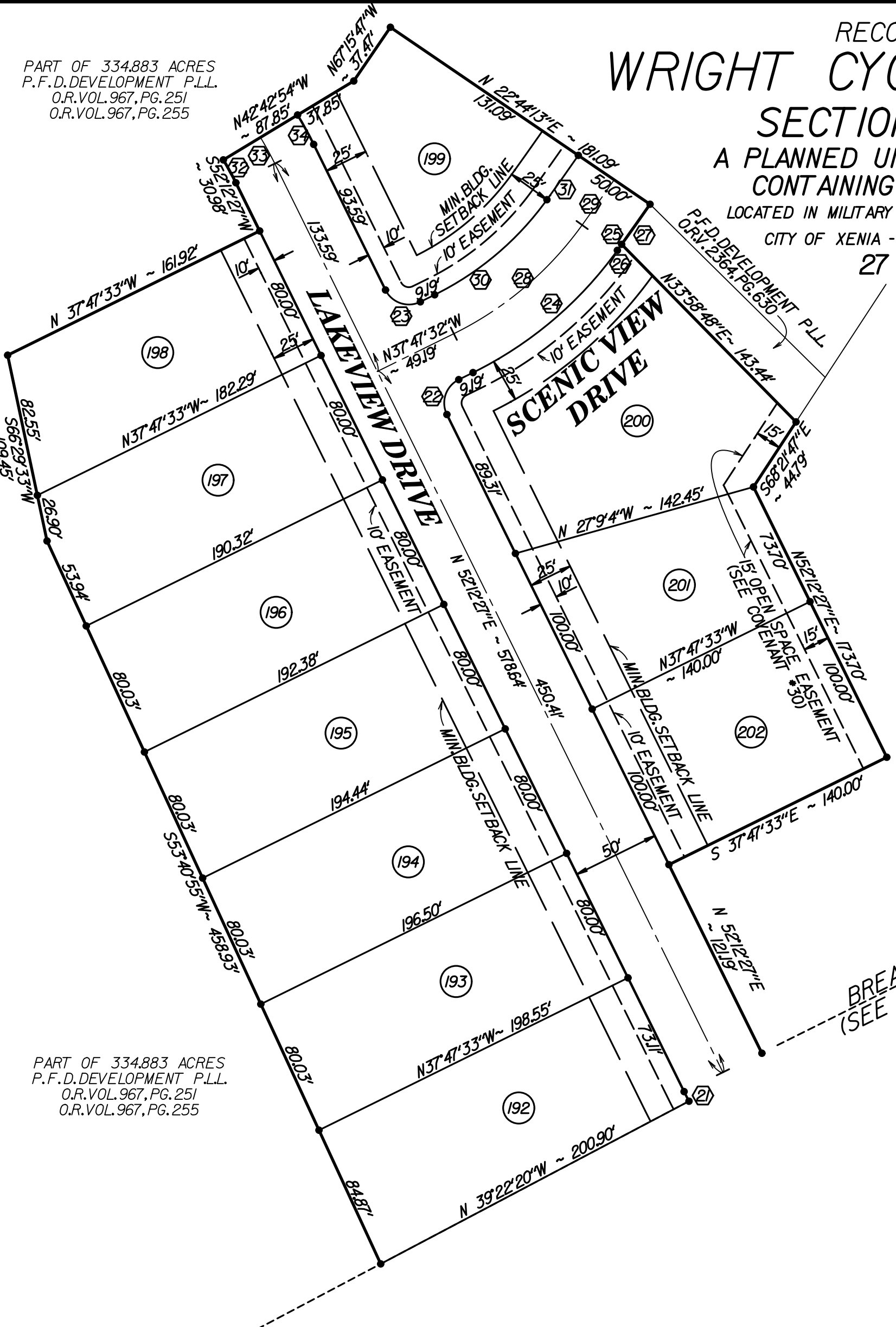
RECORD PLAN WRIGHT CYCLE ESTATES

SECTION ELEVEN A PLANNED UNIT DEVELOPMENT CONTAINING 12.352 ACRES

LOCATED IN MILITARY SURVEY NO. 2263 & 2264
CITY OF XENIA - GREENE COUNTY, OHIO
27 LOTS

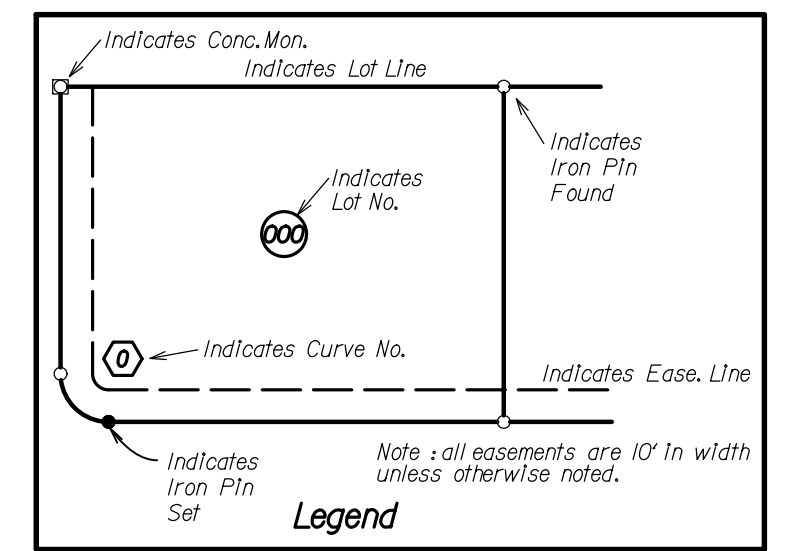
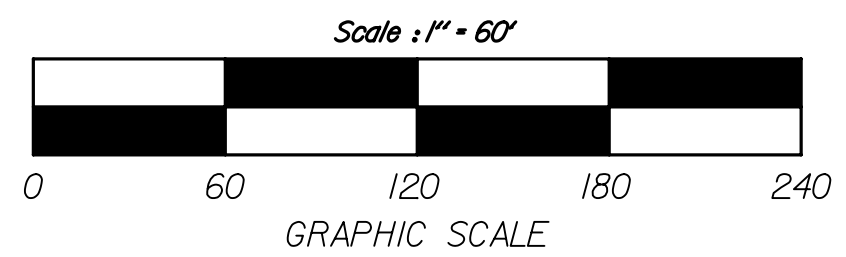
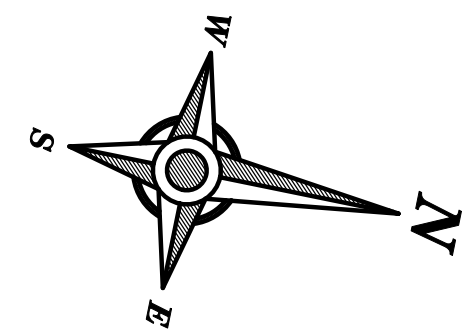
LOT AREAS	
NO.	AREA IN SF.
192	16384
193	15802
194	15637
195	15473
196	15308
197	15065
198	13769
199	13961
200	20223
201	12159
202	14000
R/W	89364
TOTAL	538075

CURVE DATA				
NO.	RAD.	ARC.L	DELTA	CHORD
21	R=225.00'	6.20'	1-134'47"	LCH=N 51'25'4"E ~ 6.20'
22	R=15.00'	23.56'	1-90'0"0"	LCH=S82'47'33"E ~ 21.21'
23	R=15.00'	23.56'	1-90'0"0"	LCH=S71'27'27"W ~ 21.21'
24	R=225.00'	110.12'	1-28'2'28"	LCH=S51'48'47"E ~ 109.02'
25	R=2363.04'	32.56'	1-0'47'22"	LCH=N66'13'42"W ~ 32.56'
26	R=2363.04'	4.24'	1-0'6'10"	LCH=N65'53'6"W ~ 4.24'
27	R=2363.04'	28.32'	1-0'4'12"	LCH=S66'16'47"E ~ 28.32'
28	R=200.00'	97.88'	1-28'2'28"	LCH=S51'48'47"E ~ 96.91'
29	R=2338.04'	31.94'	1-0'46'57"	LCH=N66'13'30"W ~ 31.93'
30	R=175.00'	85.65'	1-28'2'28"	LCH=S51'48'47"E ~ 84.79'
31	R=2313.04'	31.31'	1-0'46'32"	LCH=N66'13'17"W ~ 31.31'
32	R=175.00'	15.04'	1-4'55'22"	LCH=N49'44'46"E ~ 15.03'
33	R=200.00'	17.18'	1-4'55'22"	LCH=N49'44'46"E ~ 17.18'
34	R=225.00'	19.33'	1-4'55'22"	LCH=N49'44'46"E ~ 19.33'



CITY OF XENIA
O.R.VOL.2166, PG.526

BEARING BASIS:
WRIGHT CYCLE ESTATES
SECTION ONE
PLAT CAB.VOL.30
PGS.319A-320B



PART OF 334.883 ACRES
P.F.D.DEVELOPMENT P.L.L.
O.R.VOL.967, PG.251
O.R.VOL.967, PG.255

BREAK LINE
(SEE SHEET 1)

Prepared By: SHEET 2 of 5

SCHAEFFER, AMOS & HUGHES, LLC
ENGINEERS
SURVEYORS
1253-G Lyons Road Dayton, Ohio 45458 Tel: (937) 434-5104