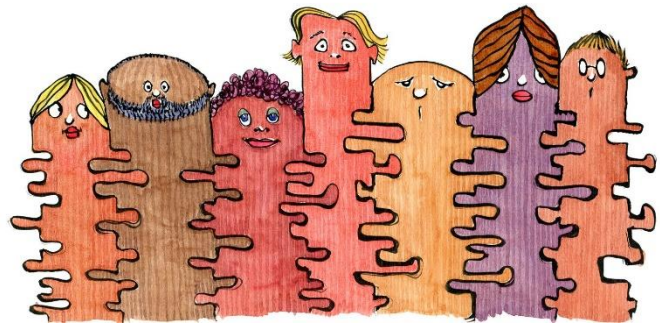


## Sticking together!

**Who loves jigsaws? Would you like to be part of making our very own community jigsaw?**

We are inviting you to submit your own jigsaw piece to be part of a larger puzzle artwork showing our beautiful variety and resilience during isolation.



### Instructions

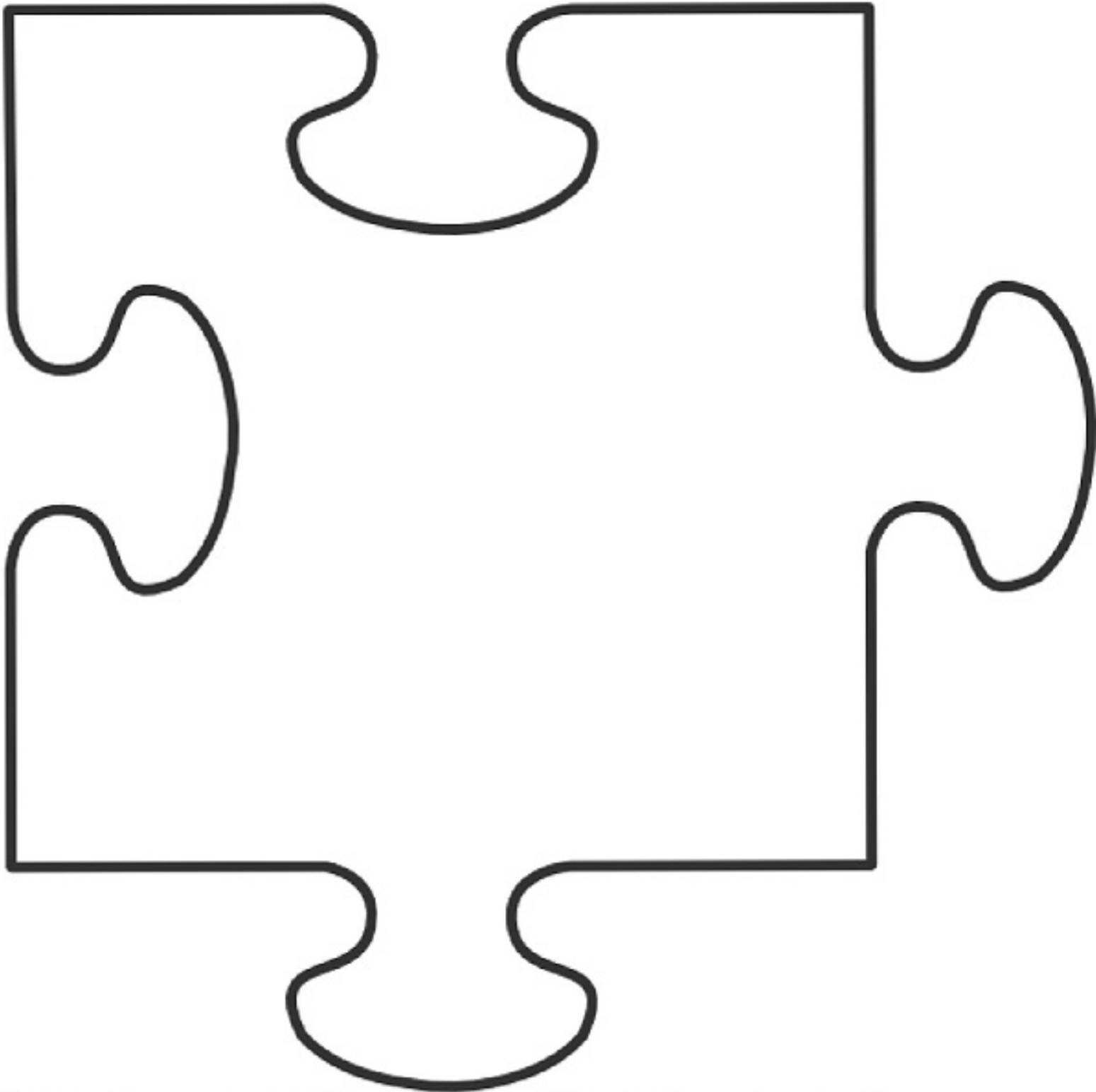
1. Put your name on one side of the jigsaw piece provided with this flyer
2. Decorate the other side of the jigsaw piece. You can write a message on it, draw on it, paint on it, stick things to it or even knit it a jumper! The more creative the better.
3. Return the decorated piece to Marrar Woorn Neighbourhood House (6 Pengilley Ave, next to the Gym) on your daily walk or give it to the care giver which gave you this flyer.

All the pieces will be put together to create a larger image which will be shared with the community and displayed at Great Ocean Road Health.

You can also scan and email to [anna.creasey@gorh.vic.gov.au](mailto:anna.creasey@gorh.vic.gov.au) . Any questions please contact Anna on 0417 741 249. We ask that all puzzle pieces be returned before the 30 September.

**THIS WAY  
IS UP ↑**

**Please write your name on  
the back.**



Please be aware that the decorated jigsaw pieces may be shared online and reproduced in print 😊