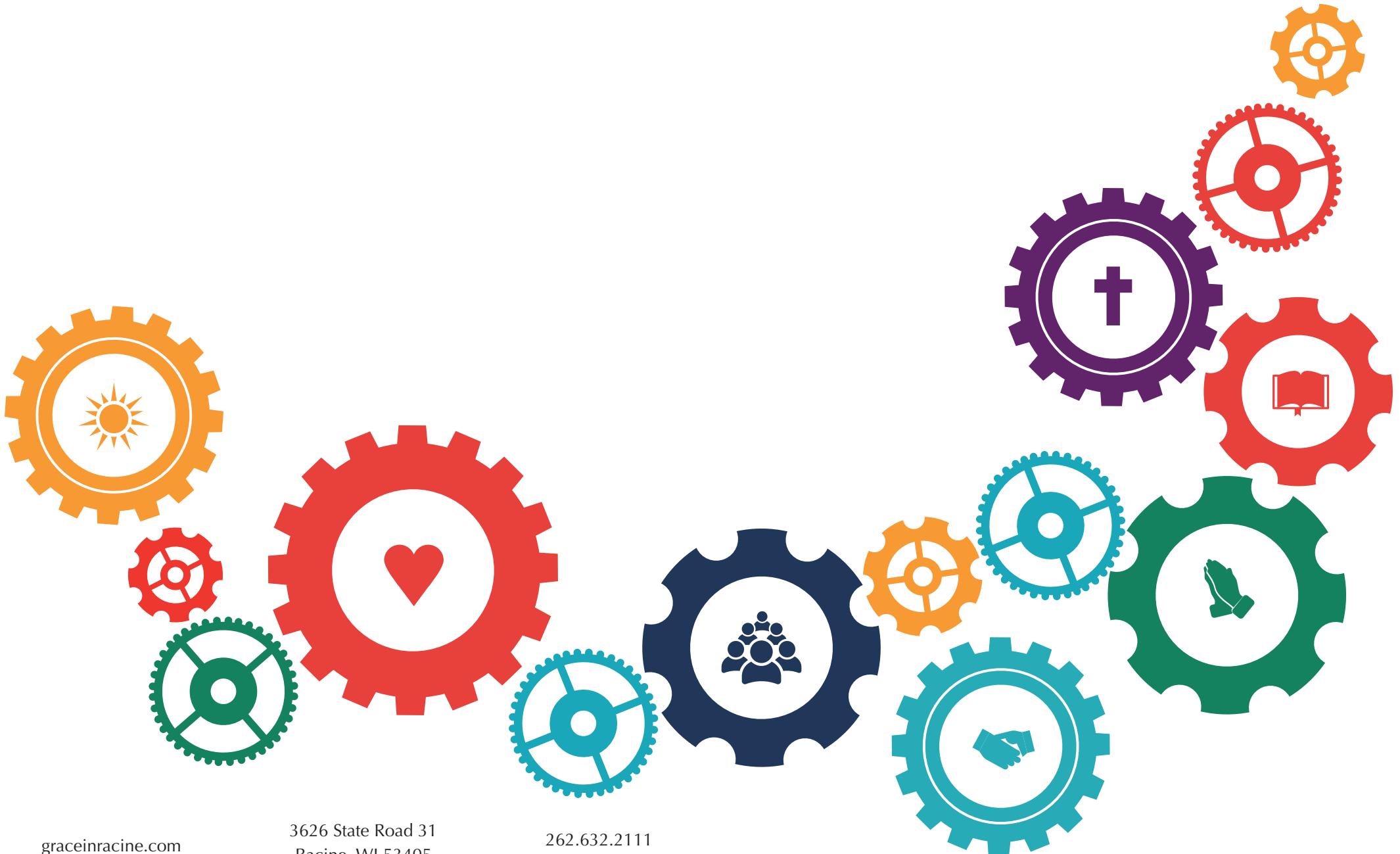


RECALIBRATE



Today's Worship Service

PRAISE

Ascribe to the Lord the glory due his name; worship the Lord in the splendor of holiness. (Psalm 29:2)

Welcome & Announcements

Call To Worship

["This is Amazing Grace"](#)

["Here is Love"](#)

Pastor Mike Matheson

Pastor Mike Matheson

Farro, Riddle, Wickham

Lowry, Redman, Rees

RENEWAL

As far as the east is from the west, so far does he remove our transgressions from us. (Psalm 103:12)

Pastoral Prayer

["How Deep the Father's Love for Us"](#)

Pastor Mike Matheson

Townend

PROCLAMATION

Make me to know your ways, O Lord; teach me your paths. (Psalm 25:4)

Reading of the Word

[1 Corinthians 12:31b-13:13](#)

Reader: *This is God's Word for us today.*

All: *Thanks be to God.*

Preaching of the Word

Pastor Mike Matheson

RESPONSE

Because your steadfast love is better than life, my lips will praise you. (Psalm 63:3)

["Jesus Paid it All"](#)

["What Love Is"](#)

Benediction

Grape, Hall, Nifong

Lindsey

Pastor Mike Matheson

1 Corinthians 12:31b-13:13

And I will show you a still more excellent way.

The Way of Love

13 [1] *If I speak in the tongues of men and of angels, but have not love, I am a noisy gong or a clanging cymbal. [2] And if I have prophetic powers, and understand all mysteries and all knowledge, and if I have all faith, so as to remove mountains, but have not love, I am nothing. [3] If I give away all I have, and if I deliver up my body to be burned, but have not love, I gain nothing.*

[4] *Love is patient and kind; love does not envy or boast; it is not arrogant [5] or rude. It does not insist on its own way; it is not irritable or resentful; [6] it does not rejoice at wrongdoing, but rejoices with the truth. [7] Love bears all things, believes all things, hopes all things, endures all things.*

[8] *Love never ends. As for prophecies, they will pass away; as for tongues, they will cease; as for knowledge, it will pass away. [9] For we know in part and we prophesy in part, [10] but when the perfect comes, the partial will pass away. [11] When I was a child, I spoke like a child, I thought like a child, I reasoned like a child. When I became a man, I gave up childish ways. [12] For now we see in a mirror dimly, but then face to face. Now I know in part; then I shall know fully, even as I have been fully known.*

[13] *So now faith, hope, and love abide, these three; but the greatest of these is love.*

Sermon Notes

Preacher: Pastor Mike Matheson

Sermon: A Relationally-Driven Church

Scripture: [1 Corinthians 12:31b-13:13](#)

Date: August 30, 2020

Sermon Review Discussion Questions

These questions are for *after* the sermon and can be used for Life Group discussion, one-to-one discipleship, or personal reflection and application.

We were created for **community**. Because God has reconciled us to one another, we want to put **a priority on personal relationships**, from membership, where we **commit** to one another as family, brothers and sisters in Christ, to group settings, where we have **fellowship** with one another, to one-to-one, where we can really **know** each other. Even as we **reach out** to the community around us, personal relationships are powerful vehicles for communicating the gospel. Yes, when people are involved things can get messy, but as it has been said, **relationships are a mess worth making**.

Discussion Questions

1. What are some of the specific issues that are currently dividing us as a community? As a nation? How might these divisive issues impact us as a church community if we let them? What is at stake if we don't instead seek to be a relationally-driven church?
2. Why is love the most important element in our relationships as believers? How does Paul describe behaviors that aren't done without love (1 Cor. 13:1-3)? What are ways we can discern whether or not we are acting in love towards one another?
3. How do Paul's definitions and descriptions of love (1 Cor. 13:4-7) help us to evaluate our own behaviors? What are specific ways you recognize your need to grow in love? What are ways you have seen love demonstrated and displayed towards you?
4. Why is love more valuable to the church than any of the spiritual gifts? What long-term impact do loving actions have on those around us? What would it look like for our church to make love the priority over any other act of service?
5. In what ways has Christ made known to us the perfect image of love? How will his return help us to more richly experience the fullness of his love for us? What are tangible ways we can grow and pursue to put his love on display in the world?

[Senior Adults Bible Study - September 10th, 12:30pm - 2pm](#)

Seniors Bible Brunch Ministry is a great opportunity to experience fellowship, study the Bible, and connect with other seniors. Meets in the Commons. graceinracine.com/connect/senioradults/



[AWANA - Begins September 16th!](#)

Registration for AWANA this fall is now open on the church website. We are asking families to pre-register to help us best prepare for how many children to expect. Please note new temporary start time: 6:45pm - 8:00pm. graceinracine.com/awana-registration/



[Fall Classes - Begin September 20](#)

Our classes are designed to help you know and follow Christ more faithfully by developing a deeper understanding of God and his Word. Most classes run twelve weeks and are scheduled before and after the Sunday worship service or on a weeknight. Contact Pastor Ryan with questions. graceinracine.com/classes/



[Life Group Sign-ups September 20](#)

If you are not currently in a Life Group, this will be a great time to get into a group! You can sign up online graceinracine.com/lifegroups. We will then place you in a group that fits your needs. Life Groups are a great place to build community, grow together, and support one another through the various challenges of life. We have groups that meet throughout the Racine area on most days of the week.



[Memorial Service for Pastor Jerry Worsham](#)

You are invited to attend a memorial service for Jerry which will be held on Saturday, September 12 at 10 am at Grace Church. If you are unable to attend in person, the memorial service will also be live-streamed: https://www.facebook.com/graceinracine/live_videos Memorial gifts in honor of Jerry may be sent to Grace Church: www.graceinracine.com or South America Mission: www.southamericamission.com Due to COVID-19, you will need to arrive by 9:30 am, and be seated prior to the service in order to adhere to social distancing restrictions. You will also be required to wear a mask during the service. There will be no visitation or receiving line but after the service the family will be outside to greet you. A private burial will take place at Graceland Cemetery.



Announcements

Welcome to Grace Church!

It's great to have you here today! If you're visiting with us for the first time and have questions, please stop by the tables in the lobby on your way out.



We've love to connect with you. Visit graceinracine.com/connectcard or scan this QR code to let us know you visited, ask questions, submit prayer requests, or indicate your interest in getting connected at Grace!

Friendly Reminders:

- The Governor of Wisconsin has issued a statewide mandate making masks mandatory in public places which went into effect on Saturday, August 1st. This means when we gather together on Sundays for worship, anyone 5 years of age or older must wear a face-covering per the order.
- Remember to maintain social distancing - keep at least six feet in between you and others. No huddles, hugs, or handshakes for now. After the service, you're welcome to visit 6 feet apart outside. Please do not stay in the building after service to talk.
- As you're seated in the sanctuary, there should always be at least two white dots in between you and the next seated person (outside of your immediate family).
- Offering boxes are located outside the main sanctuary doors and in the balcony.
- The seating outside the sanctuary window is reserved for parents with infants and young children.
- The church office is closed during the week, but the church staff is available by appointment, phone, and video conferencing.
- Remember that we may not be able to seat you in your favorite pew due to how we need to space families in the sanctuary. Thanks for your understanding and patience!

If you have something that is weighing you down today, stop outside at the main South doors our prayer team will lift you up to the Lord.

Due to the size of our church, we're not always aware of every need.

Please help us by sending life updates to care@graceinracine.com.

We would love to encourage you and pray.

Last Week: Sanctuary Attendance: 302 // Livestream Attendance: 185 households

Giving: Last Week: \$25,042 YTD: \$988,117 +/- Budget: \$-24,031

Here are some Key Words to Listen for in the sermon. Make a mark every time you hear these words:

LOVE

BEST

ACTION

PERFECT

HEAVEN



A Relationally-Driven Church

FIND THESE WORDS IN THE PUZZLE BELOW AND THINK ABOUT HOW EACH TIES IN WITH TODAY'S PASSAGE:

**ARROGANT
BEARS
BELIEVES
BOAST
CHILDISH**

**CYMBAL
ENDURES
ENVY
FAITH
GIVE**

**GREATEST
HONORS
HOPES
INSIST
IRRITABLE**

**KIND
KNOWLEDGE
LOVE
MIRROR
NEVER**

**PATIENT
REJOICES
RESENTFUL
RUDE
TRUTH**

C M Y K B N R C F I S P S J N K B P B A E V L W I R R B M L G A C F S
 Y P I O H X H A M M E K E E D J J Q E T N G C E G F V W U M Q P C Y C
 O K A T S I C B Z H U S R S L S V I L Y V G D Z O M D F F E I J U B G
 F S I S L D L P Z N F U U Z R O W J I B K G N E Y U T D Z L E R I W T
 T A M D G B P U X P W U D O Q A V N E C C N O N L N X L S B O P R N N
 F K I T S E T A E R G H N R J C E E V Z Y R L Y E W K V A A H I J O S
 I S B W F B I X D V C O E Z C P Y B E W M F D S E R O W U T V W T Y R
 H C B N B Z Y O Z Y H W K U A S C M S A B T E N H J E N Z I M G C R L
 H N E X P Z S K Q G Z U N C I H O M U N A R V K U X H V K R M E V L W
 I I E H K L F H K M B I Y J A M L J X Q L Y B O Q U Q W T R P B I N F
 R K T J C W N R E O O H K V J R G Q A P B R A R Y Y K S F I H H S S O
 G V U N K T B Q M J W L H J V Y F P I F H D W L D A D F N B N T Z W A
 U N F B O B R X T O G A D F U S K P F T L G D P J L A W C V F P H E T
 S F F R E J O I C E S P R J Z B Z Y F J A E U H Q R H T R K L O V M T
 F G E Z U W O P J P Q U H R C E G D B B P K I H Q L G J W O X P S K I
 Y F R N K C N Q N M K J K Y O W N P S A Z I L I Q X W E G W W V R T V
 W R Q X Y Y S I Y G W M Q A J G W H X M M N U T Z H Y W E F V M V C T
 I Y C B T W E Q U R A F S Z C H A R P Y B D S T U R W Q I U S V V I B
 G O M V J E A J O R T U R L I T B N P E L O H T U R T O X Q B W R I A
 G D I H A G D N M R K F B H D S R Z T W N Q A D V Q T D P F N P F R N
 T L X C K O P I D J N V V T H E Y L K E X Z T H M Y D W W N G C S R X
 T V L Z Z W T X O F S K L V M P P U L W U D T Y N E V E R V Q U Q N I
 O N C L C W S Z I Q A O M C H O B E N S W C F Q N Y J H I O U M P K I
 S P E J U P M N D G O M X G V H V S U T S F U G Z J R Z G Q A U J S V
 R E J I S M L S O M A M H T I P Y W C I B G E D U R B F I E E C X E D
 Y N D Y T K T A A P D W L O Z V O N G Q P G A V P T D W S Z V V S O J
 Z Q A R I A C C D E F E X A C L T W R Q U K S Y R O D G B L M I Q G J
 P W Y D U R P N T C Q J C P W P A L P S U S E C P S G C J M E V G U P
 W Z V D P C C Z G S V J U G V O Y W X W G I N S I S T J M C B X H T D
 L M D K Q A C U C I L J R W L B C K L B Y K F A S J U C G W J L I N U

REVIEW TODAY'S MESSAGE BY DISCUSSING THESE QUESTIONS AS A FAMILY:

- 1. READ 1 CORINTHIANS 13 TOGETHER AS A FAMILY. MAKE A LIST OF ALL THE WAYS LOVE IS DESCRIBED IN THESE VERSES AND THEN NEXT TO EACH DESCRIPTION WRITE DOWN WHAT THE OPPOSITE WOULD BE. TRY TO THINK OF AN EXAMPLE FOR EACH DESCRIPTION AND/OR ITS OPPOSITE. HOW ARE WAYS THAT YOU DEMONSTRATE OR FAIL TO DEMONSTRATE THIS KIND OF LOVE IN YOUR FAMILY, IN CHURCH, WITH FRIENDS AND NEIGHBORS, OR AT SCHOOL/WORK?**
- 2. WHAT ARE PRACTICAL WAYS YOU CAN SHOW THE LOVE DESCRIBED IN THIS WEEK'S PASSAGE TO THOSE IN YOUR FAMILY? TO THOSE IN YOUR NEIGHBORHOOD? TO THOSE IN YOUR CHURCH? COMMIT TO FOLLOWING THROUGH ON AT LEAST ONE OF THESE GOALS AND SHARE IT WITH YOUR FAMILY SO THEY CAN HELP YOU TO DO IT.**