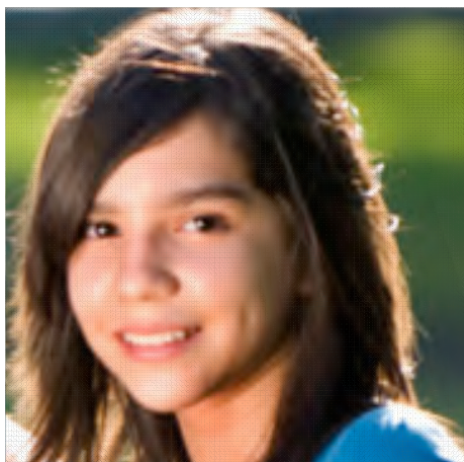
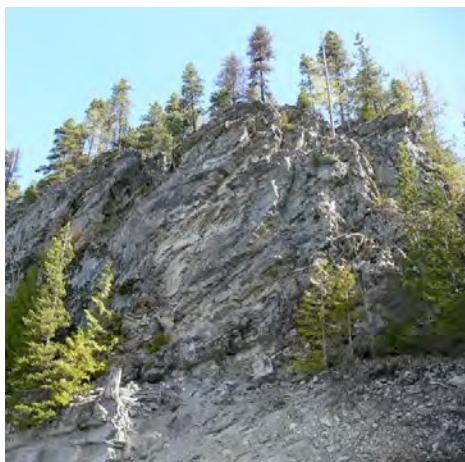
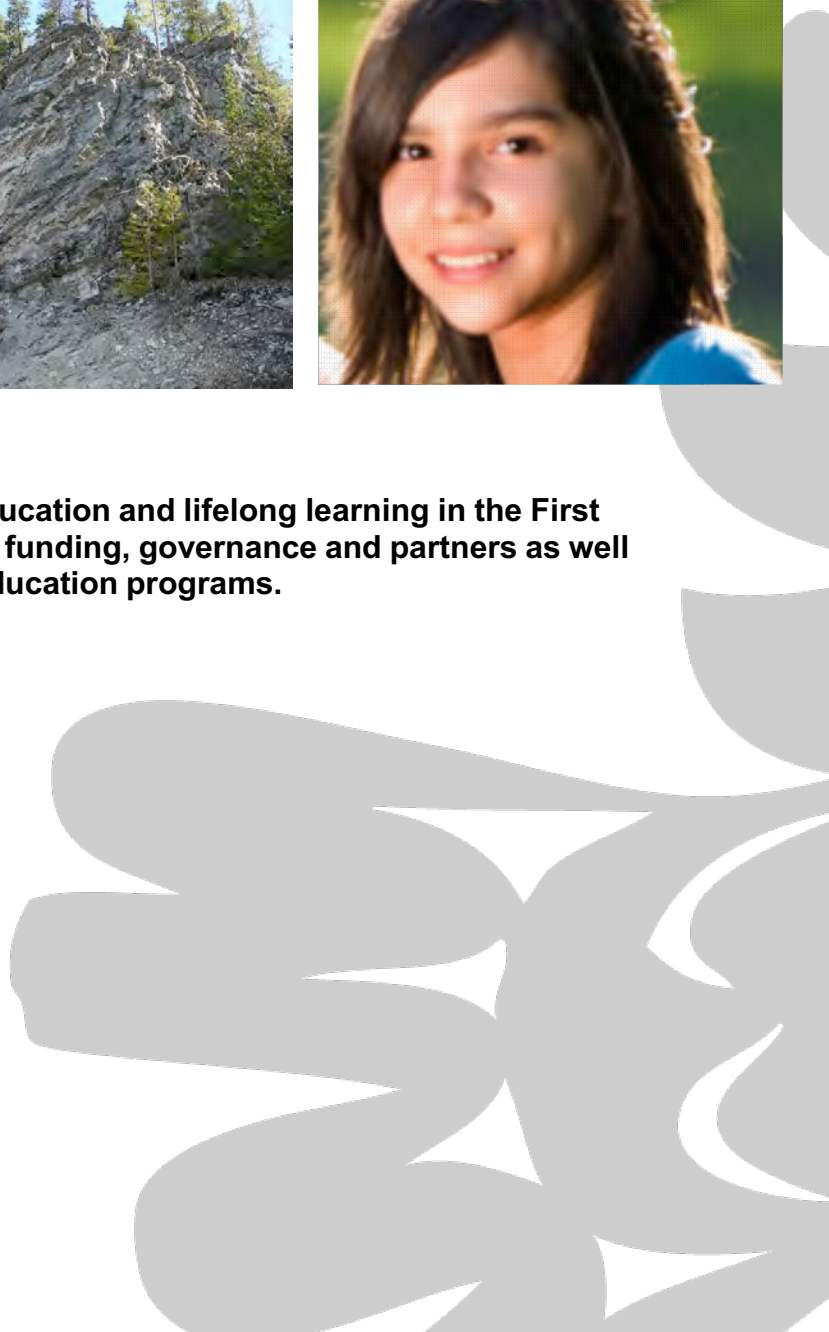


# SECTION 12: EDUCATION AND LIFELONG LEARNING

Primary Numbers: 5500 – 5999



**Section 12 includes subjects relating to education and lifelong learning in the First Nation organization community, including funding, governance and partners as well as post secondary and continuing adult education programs.**



## PRIMARY NUMBERS AND PRIMARY SUBJECTS

5510	Education and Life-long Learning	-General	
5520	Education Funding		
5530	Education Governance		
5600	Education Partners		
5700	Education Programs	- Post Secondary	
5750		- Post Secondary	- Students
5800		- Continuing Education	- Adult

**A                      SA                      FD**

**5510 EDUCATION AND LIFE LONG LEARNING – GENERAL**

Includes records relating to the provision of education and lifelong learning opportunities and services to the community which are not found elsewhere in this section.

-01	General	CY + 1	6y	D
-----	---------	--------	----	---

**5520 EDUCATION FUNDING**

Includes records relating to the funding of education in the community, including sources of funding, and proposals, agreements and final reports to the various funding agencies.

-01	General	CY + 1	6y	D
-20	Funding organizations, by name	CY + 1	6y	P
	-INAC			
	-FNSA			

For each organization, create the following folders by year

- 01 Proposals
- 02 Contribution agreements
- 03 Final reports

**5530 EDUCATION GOVERNANCE**

Includes records relating to the governance of education in the community, including jurisdiction and coordination of educational programs and services, agreements and band council resolutions. Original signed agreements will be found in primary 2280.

-01	General	CY + 1	6y	D
-02	Jurisdiction	CY + 1	6y	P
-03	Agreements	CY + 1	^Y	P
-04	BCRs	CY + 1	6y	P
-20	Governing bodies, by name	CY + 1	6y	P

**5600 EDUCATION PARTNERS**

Includes records relating to the educational organizations who partner with the First Nation organization to provide educational services and programs.

-01	General	CY + 1	6y	D
-20	Partners, by name	CY + 1	6y	D

**5700 EDUCATION PROGRAMS – POST SECONDARY**

Includes records relating to post secondary education programs offered in the community. Also includes allocations for students from the community attending post-secondary education.

-01	General	CY + 1	6y	D
-20	Programs, by name, location	SO*	6y	D
	(*SO = until updated or changed)			
-50	Education allocations, by name, date	SO*	6y	D
	(*SO = until completion of educational program)			

**A**

**SA**

**FD**

**5750 EDUCATION PROGRAMS – POST SECONDARY – STUDENTS**

Includes records relating to individual post secondary students including transcripts and educational progress reports.

-01	General	CY + 1	6y	P
-20	Students, by name, by location (*SO = until updated or changed)	SO*	nil	P

**5800 EDUCATION PROGRAMS – CONTINUING EDUCATION – ADULT**

Includes records relating to community adult education training programs and courses.

-01	General	CY + 1	6y	D
-20	Programs and course, by name (*SO = until updated or changed)	SO*	nil	D