

INSTRUCTION SHEET

INSTALLATION OF RANCO MECHANICAL BIN THERMOSTAT

PELLET ICE ONLY

1. INSTALLATION PROCEDURE

WARNING

THIS UNIT MUST BE PROPERLY ELECTRICALLY GROUNDED TO AVOID POSSIBLE FATAL ELECTRICAL SHOCK OR SERIOUS INJURY TO THE OPERATOR. THE POWER CORD IS PROVIDED WITH A THREE PRONG GROUNDED PLUG. IF A THREE-HOLE GROUNDED ELECTRICAL OUTLET IS NOT AVAILABLE, USE AN APPROVED METHOD TO GROUND THE UNIT.

IF THE SUPPLY CORD IS DAMAGED, IT MUST BE REPLACED BY A SPECIAL CORD OR ASSEMBLY AVAILABLE FROM THE MANUFACTURER OR ITS SERVICE AGENT.

DO NOT USE EXTENSION CORDS WITH THIS UNIT. DO NOT PLACE TOGETHER WITH OTHER ELECTRICAL DEVICES ON THE SAME OUTLET.



Figure 1



Figure 2

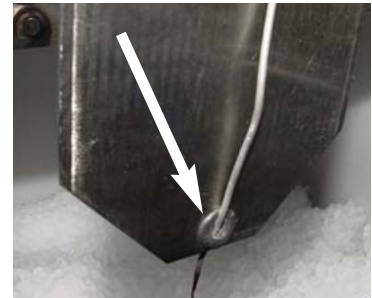


Figure 3

- 1.1 Disconnect electrical power.
- 1.2 Route the cap tube through the foam gasket next to the Ice Drop Chute (see Figure 1).
- 1.3 Route cap tube through rubber grommets on top hole of the bracket to bottom of the bin stat bracket (see Figure 2).
- 1.4 Route cap tube through rubber grommets on bottom hole of the bracket (see Figure 3). Ensure that the cap tube is pushed down at least an inch below the bracket (see Figure 4).
- 1.5 Return all covers and panels to their original positions and secure with the original screws.



Figure 4

Notes:

Bin Full Light on the board will NOT react to the bin thermostat. The thermostat will stop the ice machine when ice touches the sensor. The ice machine will restart a few moments after ice is no longer on the sensor.

Be sure that ice agitation has been adjusted to the MINIMUM - which is maximum time between agitation cycles and motor on time.

- **Setting is 4 seconds ON. 150 minutes OFF.** •

Please refer to the Lancer web site (www.lancercorp.com) for information relating to Lancer Installation and Service Manuals, Instruction Sheets, Technical Bulletins, Service Bulletins, etc.

LANCER

6655 LANCER BLVD. • SAN ANTONIO, TEXAS 78219 USA • (210) 310-7000

FAX SALES

• NORTH AMERICA – 210-310-7245 • INTERNATIONAL SALES – 210-310-7242 • CUSTOMER SERVICE – 210-310-7242 •
• LATIN AMERICA – 210-310-7245 • EUROPE – 32-2-755-2399 • PACIFIC – 61-8-8268-1978 •

• FAX ENGINEERING: • 210-310-7096 •

• "Lancer" is the registered trademark of Lancer •
• Copyright — 2004 by Lancer, all rights reserved •

DATE: 10/20/04
P.N. 28-0577