

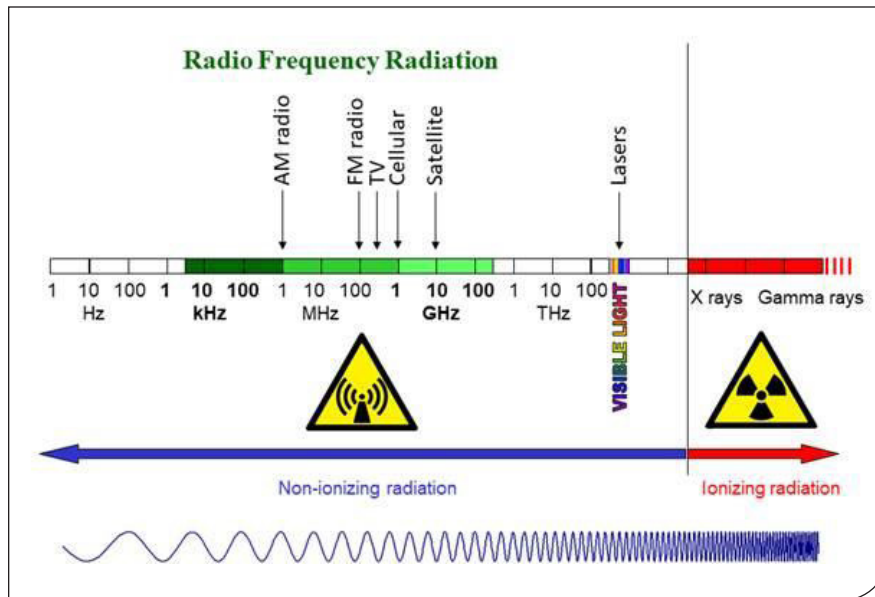
RF Safety



The FCC has established guidance for occupational and non-occupational exposure to Radiofrequency Energy (RF). This PAN is focused on occupational exposure for individuals engaged in the deployment of telecommunication infrastructure. There is a myriad of hazards on a telecommunications worksite. RF is one of those hazards, however, there are times where it has been inappropriately enunciated. The intent of this PAN is to show that with proper training, planning, communication, and equipment, this hazard like all others can be effectively mitigated.

RF safety is a rather broad topic which can be very technical and difficult to comprehend, especially when one is only looking for a quick multistep program to ensure all those involved are safe from the associated risks. In this PAN, we will be focusing on the RF hazards employees encounter on a day-to-day basis, covering the information in detail and finishing with a simplified approach that your company can utilize as part of an overall plan to keep your workforce safe.

RF is a subset of the Electromagnetic (EM) spectrum spanning from 3 kHz to 300 GHz. Electromagnetic radiation consists of electric (E) and magnetic (H) fields emanating from a source and traveling with wave-like characteristics. In short, RF is radio waves that are transmitted from antennas to other antennas, satellites, phones and TV's that we use all day, every day. In today's world RF is constantly all around us. Below is a picture of a simplified graph of the RF spectrum and the frequencies and associated wavelengths.



Is all radiation dangerous? To a degree, yes. However, some frequencies would require very high dosages to become dangerous. Throughout this PAN, we will be focused on the RF range of 3kHz to 300GHz as these are the ranges that telecom employees will encounter and be exposed to in their line of work.

Potential Effects of RF Exposure

On the lower end of the RF spectrum, below 100 kHz, the primary effects of exposure are electrostimulation of the bone and muscle. Moving higher up to the low single digit MHz region, it is a combination of electrostimulation and heating. Beyond that, effects of exposure can be body heating.

This heating occurs as a result of polar molecules within your body trying to orient themselves to the incident RF field. As the field is oscillating, the molecules are trying to follow the field with this constant reorientation causing the heat. A great example of RF heating is heating food and beverages in microwave ovens, which typically operate at 2.4 GHz, transmitting approximately 1 kW of power into the shielded chamber. This is non-ionizing radiation, which means that its effects are limited to heating and the damage that can be caused by heating, not a molecular change as would occur when exposed to ionizing radiation.

Generally, there are three groups that we can use to define the effect that RF exposure will have on the human body.

Quasi-Optical Resonance

Wavelengths that are smaller than the human body, frequencies from 300MHz and higher. Typical wavelengths are two feet or smaller and are made by Microwaves, Cellular antennas and Satellites. Quasi-Optical frequencies create localized heating or burns and can affect your eyes, brain and testes.

Human Resonance

Wavelengths that are between 150 MHz and 200 MHz where the wavelength is between 4.92 feet and 6.56 feet (the height of the average person). We call this range "Human

CONTINUED ON NEXT PAGE

Author: **Benjamin Bowman**. The members of the PAN Advisory Group who are involved in the writing and researching of each PAN topic include: Craig Snyder, Jeremy Buckles, John Erichsen, Ken Hill, Michelle Kang, Marianna Kramarikova, and Scott Kisting.

Resonance". This is the most dangerous for humans due to the body absorbing almost all of the RF energy.

Sub-Resonance

Wavelengths that are larger than the human body, frequencies 150MHz or lower. These sub-resonant wavelengths create very little absorption within the human body as the wavelengths will often be much larger than a humans height. We find these wavelengths with Shortwave radios, Maritime Navigation equipment and AM towers. Exposure to sub-resonant frequencies can result in electrocution, RF burns and contact burns.

RF over-exposure symptoms are: flu-like symptoms, heat stress, confusion, vertigo, blurred vision, headaches, sore throat, nausea, cramps, and bad taste (metallic).

Assessing Site Hazards

RF Site Assessment

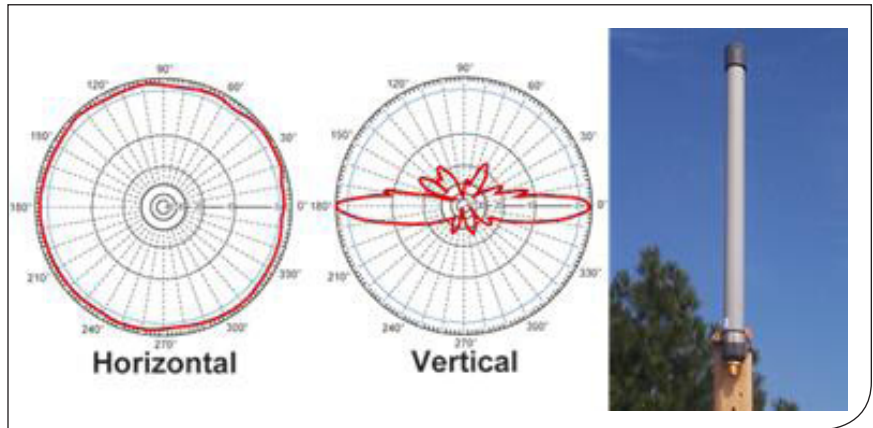
To identify the RF dangers, an assessment of all the potential RF hazards on site needs to be completed.

An RF assessment should take into account the scope of work to be performed, the types of antennas in the work area, access and egress areas, and unique structure requirements that may create additional exposure hazards. It should also identify the presence or lack of presence of signage or placards; however, one should not rely solely on the signage.

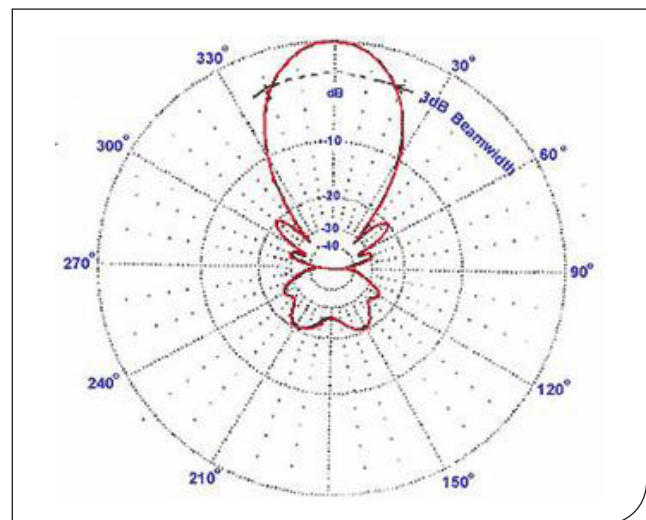
A proper RF site assessment should include, but not be limited to:

1. Scope of Work
 - a. Will the work be performed in the path of the RF?
 - b. Is there a need to climb in front of the RF path?
 - c. Is there a way to avoid the RF all together?
 - d. Can the transmitter on site be turned down to minimize dangers (Lock Out/Tag Out)?
 - e. Can we do any extra prep work on the ground or a sheltered area, so that we are able to spend less time in the 'danger area'?
 - f. What is the duration of the work?
 - g. What are the frequencies and output power of the RF at the site?

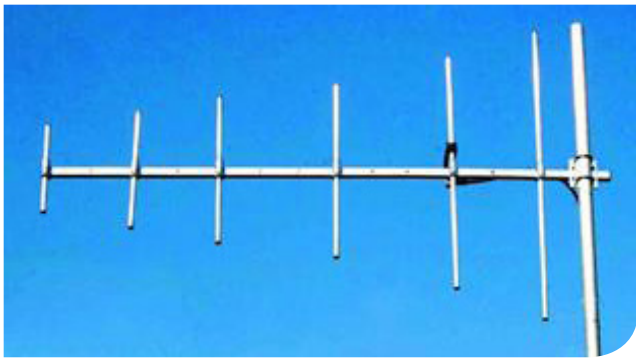
- h. Is a designated RF monitor required?
 - i. Is an RF meter required?
 - j. Employee RF PPE requirements for the work area?
2. Antenna Type
 - a. Omni Antenna
 - i. Omni antennas can radiate in a 360 degree direction on the horizontal axis. See example below.



- b. Directional Antenna
 - i. Directional antennas can be a lot easier to identify the direction that the RF is traveling. Examples of directional antennas are abundant on 'traditional' telecom structures.
 - ii. Yagi Antenna
 1. Single or multi-element directional antennas that are typically line of sight.



CONTINUED ON NEXT PAGE



- iii. Panel Antenna
 - 1. Single or multi-element direction antennas and are designed for radiation up to 180 degrees.
 - 2. Panel Antennas are adjustable in power levels (Both locally and remotely) which increases the hazard of exposure.
 - iv. Microwave Antenna
 - 1. Line of sight antenna has a very focused beam increasing the exposure when directly in the path.
 - v. Dipole
 - 1. Multiple radiating elements that can vary in the radiation pattern of the horizontal and vertical axes.
 - vi. FM Antenna
 - 1. Radiates 360 degrees.
3. Structure Type
- a. Monopole
 - i. Climbers may be forced to pass directly in front of the antenna.
 - b. Lattice Tower
 - i. Climbers may be forced to pass directly in front of the antenna.
 - ii. Is there an alternate climbing path to avoid the hazard?
 - c. AM Considerations
 - i. Is the tower an AM structure? Is it powered down?
 - ii. Is the structure in close proximity to an AM station?
 - iii. Is there a detuning skirt on the structure?

- iv. Is everyone aware of potential electrical hazards from an AM structure or detuning skirt?
- d. Rooftop
- i. One of the primary concerns on rooftops is when work is occurring in an area at the same elevation of existing antennas. There may be multiple radiating sources at any location on the roof, and it is imperative that employees be cognizant of all radiating sources in the vicinity of their location and the potential hazards that they pose. There may be areas where the employee is in the direct field created by a directional antenna. For example, employees performing work on a ballast mount should be aware of other antennas located on the roof that are behind the ballast mount they are working on. These antennas can be direction or omni directional exposing the employees to elevated RF fields. This includes the roof that they are working on, but also neighboring rooftops that are also on the same level. If possible, keep antennas above head level as the antennas will transmit over your head and not through your body.
 - ii. When on rooftops with antennas present, always carry the appropriate RF monitor that will notify you if you are at risk of overexposure.

RF Plan

After we have assessed the site and understand all the possible dangers in the area, it's time to develop an RF plan.

In order to develop an RF plan it is essential that the competent person performing an RF assessment be on site as there are always changed conditions and these conditions must be addressed as part of the on-site planning. The plan must identify the employees working in the area of the hazard, ensure that they have received proper RF training and have identified the types of equipment to be utilized as a part of the RF plan. This may involve the use of properly calibrated RF meters or additional PPE for the employees. We need to know and understand what types of controls will be used to keep employees safe from the RF hazards.

CONTINUED ON NEXT PAGE



Avoiding Overexposure

Once the site assessment is complete and it is determined that it is not possible to avoid exposure all together, a plan must be developed that considers the appropriate PPE for the amount of exposure. Such PPE would include anything from an RF meter to a full body RF suit. As with any PPE, training on inspection, care and use is required.

At any time, an employee needs to be aware of whether the RF to which they're potentially exposed to exceeds the Maximum Permissible Exposure (MPE) level. Personal RF monitors can be a part of the employee's PPE, and provide a warning of exposure level that can be addressed as a part of our RF plan. This may involve exiting the RF field, requiring turndown of equipment, or seeking additional support to modify the plan, ensuring employee safety.

The majority of the RF meters which are available currently display exposure as a percentage of the MPE

for the six-minute window. This percentage display is referred to as a "shaped" response. Anything which is displayed under 100% of the MPE doesn't require abatement. For everything 100% and above, the employee should exit the field and consult with their competent/qualified person as defined in their company's RF hazard mitigation program. For additional information, please see the FCC OET 56.

Equipment manufacturers calibrate their devices so that these percentages are associated with the MPE's for the countries in which they'll be used. If you're using an RF meter, be sure to refer to the manufacturer's instructions to understand the reading that the device provides, and how to safely work based on those readings. In addition, it is critical that the proper meter is selected for the RF fields and frequencies to be encountered. RF meter training needs to provide every user with the RF meter manufacturers recommended operating procedures and the means to inspect to ensure proper functionality of the RF meter.

If at any point while working you believe that you or a coworker may be suffering from exposure, you should immediately remove yourselves from the RF source, move them to a cool dry area, loosen any heavy clothing, drink plenty of room temperature water and depending on severity possibly seek medical attention. Until the employee is fully recovered, someone should always stay with the effected person.

Once the affected employee has fully stabilized, make sure to report the incident in compliance with the company's RF mitigation policy. ■