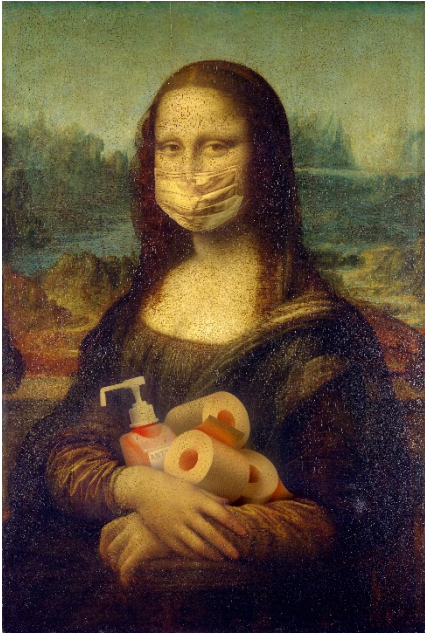


What to expect during COVID winter shows at WAG...



Now that we are nearing the winter season, we are evaluating the current protocols for COVID and how we can continue to manage our events with safety in mind for all.

Show sizes will stay at one ring size in the covered arena only to cut down on large crowds. However, since we will not be able to spread out as far as we have been during the summer/fall shows we need to look at the options we will have for social distancing. With people wanting to be in the arena more to avoid inclement weather and of course to watch and participate in the events, it's inevitable that our social distancing that has worked well while we were spread out all over the facility earlier in the year will be much more challenging.

Masks will be the necessary normal in the arena. Although our arena is very open air and that helps tremendously with ventilation, it will still be difficult

to avoid people passing through the aisles or sitting in front of their setups with adequate social distance to be consistently as safe as we'd like things to be. With that said, we still wish to implement social distancing as much as possible and request that whenever possible you keep your 6+ foot distance, even when wearing a mask. Congestion in some areas will be likely on occasion, but we can all work hard to keep these issues to a minimum by being mindful.

So, these are some of the things we are asking for everyone to help with:

- Wear your mask in the arena.
- If you are just taking a quick drink – no worries. However, eating your lunch, snacks – it would be best to take it outside, if the weather is decent or to your vehicle. If you crate with others in a stall, you could take turns being in the stall and away from the aisles to eat lunch. Those that crate on the south side of the arena – please note we will still need to keep the space utilized as efficient as possible.
- Visiting with friends – at 6+ feet – great! If you can't maintain that – and weather is decent – please take it outside.
- Crating – if you are comfortable crating from your trailer/camper or vehicle that would be very helpful to keep the numbers down in the arena. We will do our best to clear up more space as well for crating. We will also allow canopies to be setup in the front circle and the main lawn as well as in the RV row where there are open spaces. So, lots of room to spread out. Not always as convenient, but helpful overall for space. Remember, social distance is still what we are aiming to achieve for everyone when possible.
- Utilize the websites with show details more. We have had a lot of folks not ever looking at the run orders online and just going often to the gate to check on the run order. This does not help us cut down on interactions.

Lastly, be kind, courteous and helpful. We are all dealing with these tough circumstances as a community together. We don't need "mask police" tattling on every infraction. Just everyone trying to do their best for the sake of everyone else as well as for themselves. We want to be able to continue to offer our dog events for all to enjoy, but we do need cooperation from everyone to succeed in the best possible manner.