



PO Box 684, Glendive, MT 59330

406-377-3228

[museum@midrivers.com](mailto:museum@midrivers.com)

[www.creationtruth.org](http://www.creationtruth.org)

Summer 2018

Dear Friends of FACT and the Glendive Dinosaur & Fossil Museum,

On spring and summer mornings I like to sit on my back deck and listen to the birds calling to each other in the field behind our house. As the weather warms, I have often wondered about how these creatures survive the harsh Montana winters. While some migrate south, many stay through the below-zero temperatures. How does a small sparrow avoid freezing solid?

In, *Letting God Create Your Day*, author Paul Bartz says that, "...birds have a network of arteries that all blood going into their legs must enter. These arteries are interwoven with the veins returning from the foot. When the blood going to the foot enters this structure, called a "wonder net," its temperature is 106 degrees F. The blood returning from the foot at the same time is only 37 degrees F. The warm blood passing through the net reheats the cold blood coming from the foot before it enters the body. The result is that the bird loses very little body heat. So the blood going into the foot never becomes dangerously cold in normal winter weather."<sup>1</sup>

What an amazing God we serve! Our Creator designed even the smallest sparrow to withstand the grueling winter temps—and if He takes care of sparrows, how much more will He care for us? As Jesus said in Matthew 10:31, "***Fear not, therefore; you are of more value than many sparrows.***"

Along with visiting the Glendive Dinosaur & Fossil Museum this summer, you can learn more about God's



creative work by attending a special creation event being held in **Medora, ND**. We are partnering with the Institute for Biblical Authority and the Institute for Creation Research to bring to Western North Dakota the **Badlands Creation Conference**. It will take place **June 30-July 3, 2018**, and offer great teaching about how the Bible and science go hand in hand. The Glendive museum is sponsoring fossil digs each day, as well as providing youth education events on Sunday afternoon (July 1). This family-friendly event—a rare treat for the people of the prairie west!—is designed around the natural beauty of the North Dakota badlands, Theodore Roosevelt National Park and the

restored western town of Medora. For more detailed and up-to-date information, visit **[www.iba777.org](http://www.iba777.org)**. The conference is free but registration is required, so register today to hold your place. See you in Medora **June 30-July 3, 2018!**

<sup>1</sup> *Letting God Create Your Day*, by Paul A. Bartz, vol. 2, Creation Moments, 2009, pp. 185.



## SUMMER HOURS BEGIN!!!

OUR SUMMER HOURS START ON MAY 15, 2018:  
TUES-SAT. FROM 10AM TO 5PM.

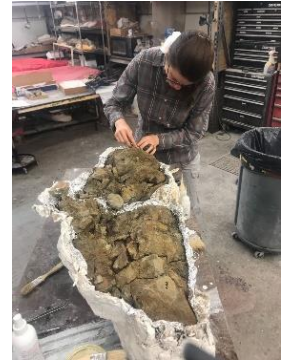
---

## FOSSIL DIG OPENINGS!

Our summer dig schedule is filling up fast, but we still have openings available. Please visit [www.creationtruth.org/digs](http://www.creationtruth.org/digs) for more information and to reserve your spot!



Recently, our dig supervisors, Tommy & Martha Lohman, had the privilege of working with the Black Hills Institute in Hill City, SD. The Lohmans went there to learn advanced fossil prep techniques, with the long-term goal of preparing our 50%-complete ceratopsian, "Big John," for display. However, to accomplish this, and to work on other fossils, our lab needs equipment we do not currently have. Would you consider contributing toward the purchase of the following items?



- DirectFlo by Comco Inc. system (unit, hoses and abrasive pen) \$7,500.00
- Fossil storage cabinet \$7,500.00
- Pneumatic pens \$1,500.00
- Electrical power strip and flexible swing arm light fixtures \$250.00
- Handheld grinder with diamond blades \$125.00
- Rolling tool chest \$200.00
- Grinding wheel with diamond grinding disk \$250.00

If you would like to donate, please designate the item you are sponsoring on your check. You can also contribute by visiting [www.creationtruth.org](http://www.creationtruth.org) and clicking the "donate" button at the top of the page.

In addition, we would ask for your prayers:

- That God would break the spiritual hold the enemy has on many, and allow people to see the evidence presented in the museum with clarity of mind.
- For the safety of our dig supervisors and guests.
- For our two summer interns and current museum volunteers.
- That the Lord will raise up more volunteers.

We count ourselves blessed to have supporters like you all over the world! May God bless you!

*Robert*

Robert Canen  
President/Museum Director  
[robert@creationtruth.org](mailto:robert@creationtruth.org)

*Tommy*

Tommy Lohman  
Dig Site/Lab Director  
[tommy@creationtruth.org](mailto:tommy@creationtruth.org)