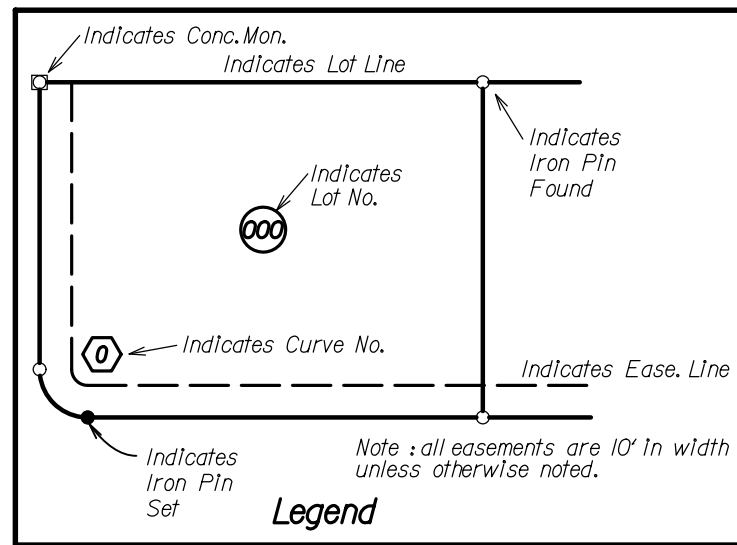
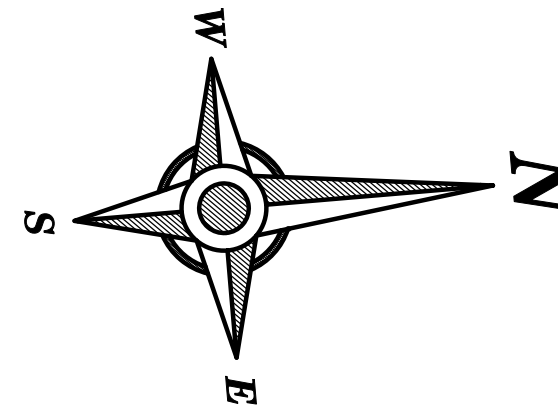


LOT AREAS	
NO.	AREA IN S.F.
140	8406
141	7196
142	8266
143	10059
144	10458
145	9066
146	8552
147	8310
148	8468
149	10727
150	11400
151	14436
152	9096
153	6000
154	6000
155	5936
156	9798
157	11191
158	6000
R/W	49317
TOTAL	218682

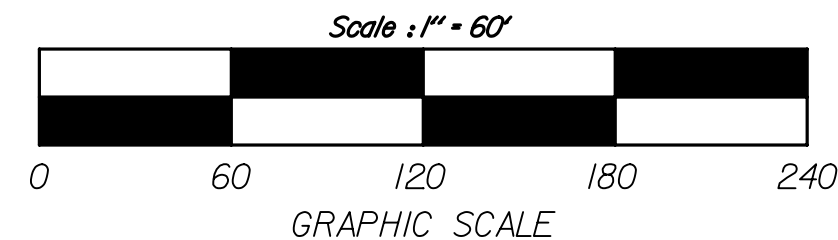


RECORD PLAN
WRIGHT CYCLE ESTATES
SECTION NINE
 A PLANNED UNIT DEVELOPMENT
 CONTAINING 5.020 ACRES
 LOCATED IN MILITARY SURVEY NO. 2263 & 2264
 CITY OF XENIA - GREENE COUNTY, OHIO
 19 LOTS

CURVE DATA				
NO.	RAD.	ARC.L.	DELTA	CHORD
1	R-15.00'	23.56'	1-90°0'0"	LCh-S 49°50'0"W ~ 21.21'
2	R-15.00'	23.56'	1-90°0'0"	LCh-S40°10'0"E ~ 21.21'
3	R-15.00'	23.56'	1-90°0'0"	LCh-N40°10'0"W ~ 21.21'
4	R-15.00'	23.56'	1-90°0'0"	LCh-N49°50'0"E ~ 21.21'
5	R-225.00'	5.00'	1-1°16'24"	LCh-N84°31'48"W ~ 5.00'
6	R-225.00'	44.50'	1-1°19'54"	LCh-N78°13'39"W ~ 44.43'
7	R-225.00'	45.00'	1-1°27'33"	LCh-N66°49'55"W ~ 44.93'
8	R-225.00'	45.00'	1-1°27'33"	LCh-N55°22'22"W ~ 44.93'
9	R-225.00'	45.00'	1-1°27'33"	LCh-N43°54'49"W ~ 44.93'
10	R-225.00'	45.00'	1-1°27'33"	LCh-N32°27'16"W ~ 44.93'
11	R-225.00'	45.00'	1-1°27'33"	LCh-N20°59'43"W ~ 44.93'
12	R-225.00'	45.00'	1-1°27'33"	LCh-N9°32'10"W ~ 44.93'
13	R-225.00'	33.93'	1-8°38'24"	LCh-N0°30'48"E ~ 33.90'
14	R-50.00'	53.21'	1-60°58'40"	LCh-S25°39'20"E ~ 50.74'
15	R-51.00'	79.79'	1-83°38'37"	LCh-N11°19'22"W ~ 71.90'
16	R-51.00'	74.06'	1-83°11'56"	LCh-N75°55'54"E ~ 67.72'
17	R-51.00'	33.55'	1-37°41'41"	LCh-S44°27'18"E ~ 32.95'
18	R-51.00'	27.10'	1-30°26'27"	LCh-S10°23'14"E ~ 26.78'
19	R-175.00'	40.82'	1-13°21'51"	LCh-N1°50'56"W ~ 40.73'
20	R-175.00'	178.12'	1-58°19'55"	LCh-N37°41'24"W ~ 170.53'
21	R-175.00'	55.95'	1-18°19'4"	LCh-N76°0'28"W ~ 55.71'
22	R-225.00'	353.43'	1-90°0'0"	LCh-N40°10'0"W ~ 318.20'
23	R-51.00'	214.50'	1-240°58'40"	LCh-N64°20'40"E ~ 87.90'
24	R-175.00'	274.89'	1-90°0'0"	LCh-N40°10'0"W ~ 247.49'
25	R-200.00'	314.16'	1-90°0'0"	LCh-N40°10'0"W ~ 282.84'

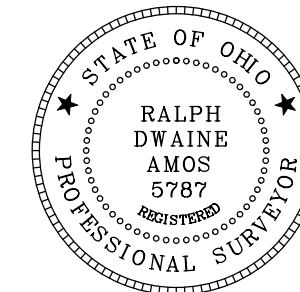


PART OF 334,883 ACRES
 P.F.D. DEVELOPMENT P.L.L.
 O.R. VOL. 967, PG. 251
 O.R. VOL. 967, PG. 255



CERTIFICATION:
 I hereby certify that this is a true and complete survey made under my supervision. Iron pins will be set at all lot corners upon completion of construction. Curve distances are measured on the arc.

Ralph D. Amos, Professional Surveyor
 State of Ohio no. 5787



OWNER & DEVELOPER:
 P. F. D. DEVELOPMENT P.L.L.
 984 ORVILLE WAY
 XENIA, OHIO 45385
 PHONE: (937) 376-9113

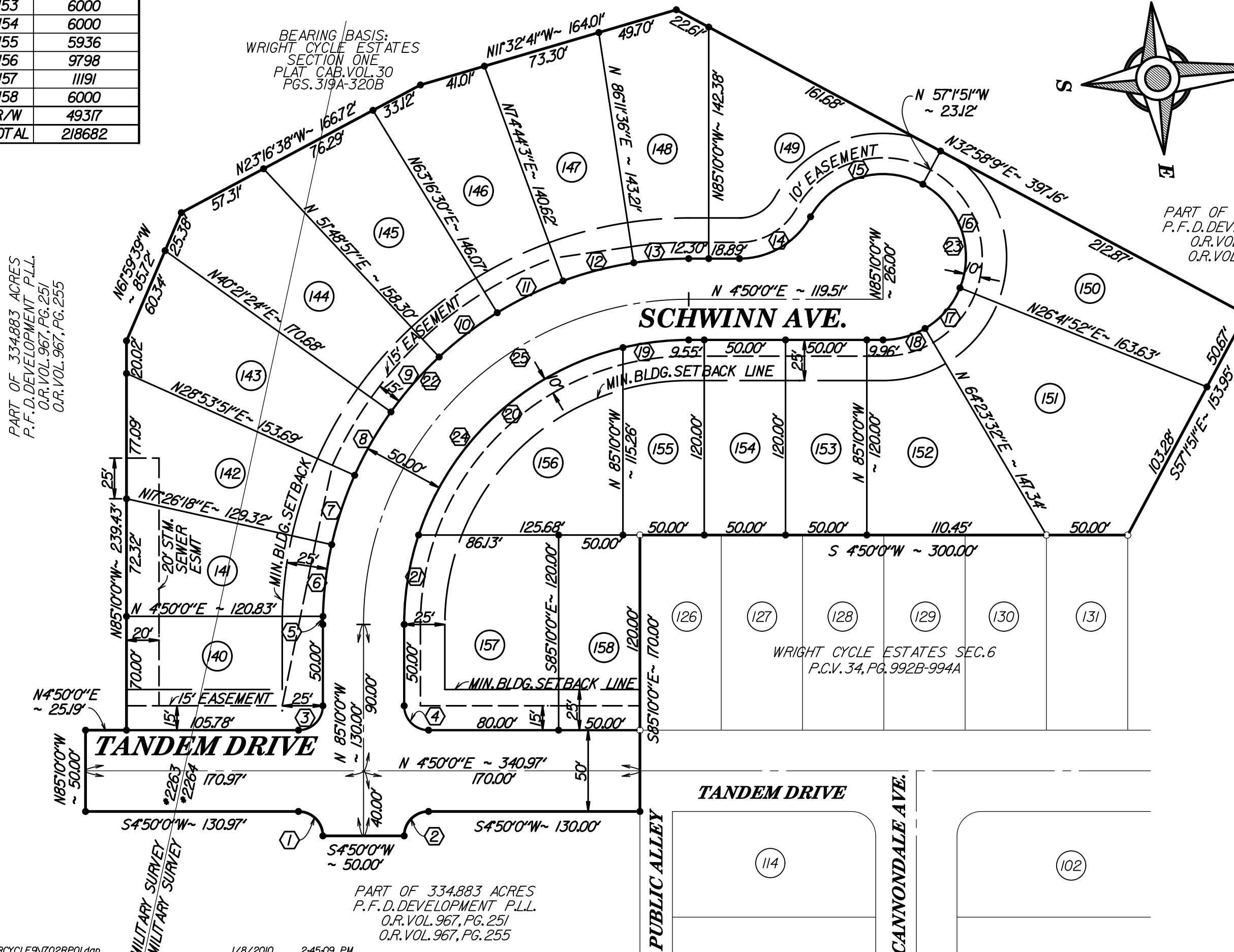
Prepared By: SHEET 1 of 4

SCHAEFFER, AMOS & HUGHES, LLC
 ENGINEERS SURVEYORS
 1253-G Lyons Road Dayton, Ohio 45458 Tel: (937) 434-5104

JOB NO. 04-1702.A

PART OF 334,883 ACRES
 P.F.D. DEVELOPMENT P.L.L.
 O.R. VOL. 967, PG. 251
 O.R. VOL. 967, PG. 255

BEARING BASIS:
 WRIGHT CYCLE ESTATES
 SECTION ONE
 PLAT. CAB. VOL. 30
 PGS. 319A-320B



WRIGHT CYCLE ESTATES SEC. 6
 P.C.V. 34, PG. 992B-994A

PART OF 334,883 ACRES
 P.F.D. DEVELOPMENT P.L.L.
 O.R. VOL. 967, PG. 251
 O.R. VOL. 967, PG. 255