

# Elecraft KXAT2 Builder's Alert

E740318

Revision A January 9, 2017

Copyright © 2017, Elecraft, Inc. All Rights Reserved

## CAUTION!

**Follow the instructions below to avoid damaging or destroying a circuit board in your KX2.**

Installing the KXAT2 is a simple, straightforward procedure. However, components inside the KX2, particularly those on the KX2 Band Pass Filter (BPF) board, are easily damaged if the KXAT2 board is allowed to hit them. Follow the procedure below to ensure you do not damage your KX2.

**⚠ The KX2 BPF board is the board mounted vertically next to the standoff on the reverse side of this page.**

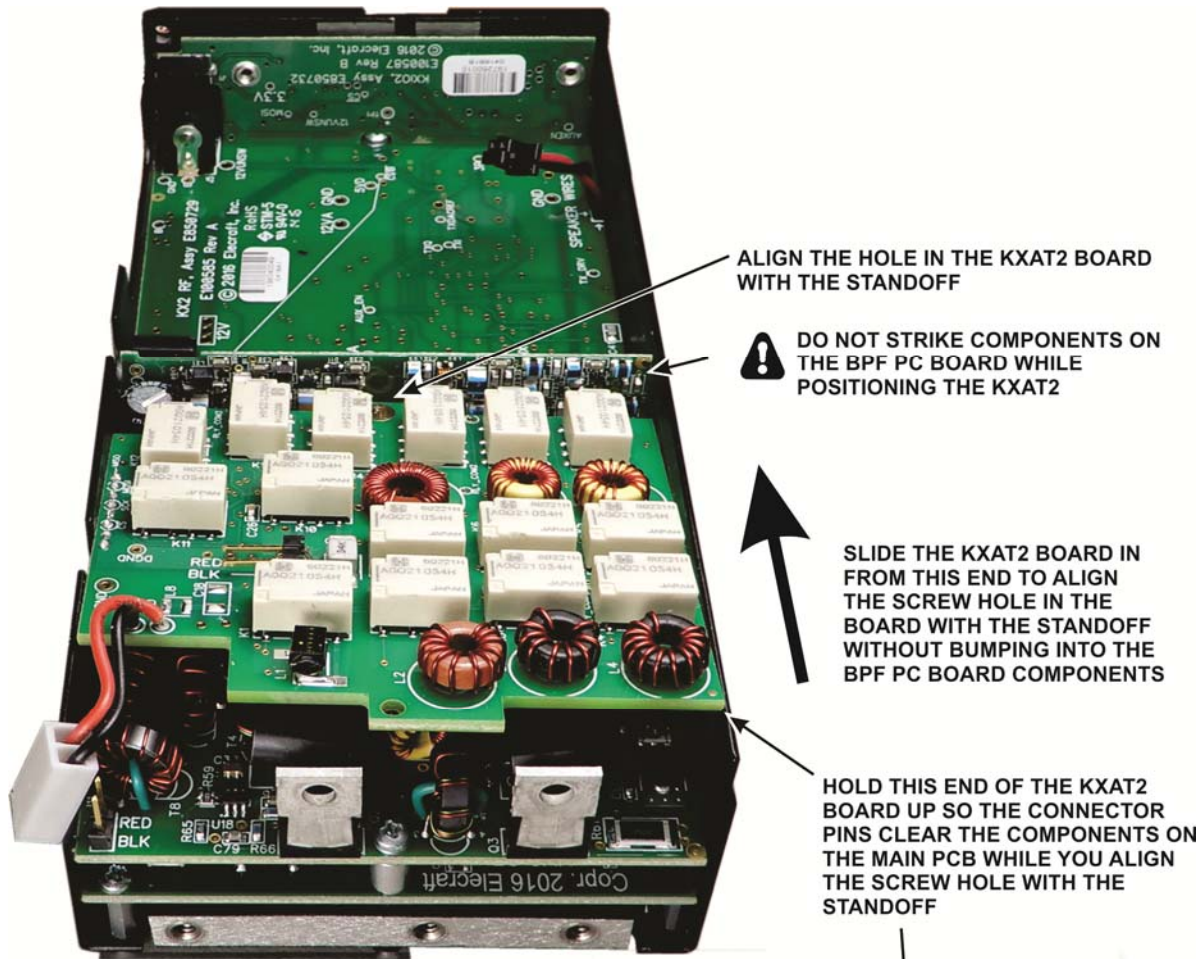
Follow the procedure in the enclosed Installation Instructions up through the first step at the top of page 3.

Refer to the figure on the reverse side of this page to position the KXAT2 board in the KX2. Note that the KXAT2 board has a connector with eight pins mounted on the underside of the board. These pins will mate with connector J1 on the main board inside the KX2. Tilt the KXAT2 board at an angle as shown in the figure so you can place the screw hole in the board onto the standoff without bumping into the BPF board while the eight pins on the bottom line up with the mating connector on the KX2 main board.

Carefully press the KXAT2 board down to mate the connectors. As you press down to seat the board you will feel moderate resistance from the connector mating.

**⚠ Be sure the KXAT2 board does not strike any components on the BPF board standing vertically next to the standoff. When replacing the screw and lock washer in the standoff, be sure your screwdriver does not strike and damage components on the BPF board.**

Continue on with the installation starting with Figure 4 and the accompanying text in the Installation manual to finish the installation and reassemble your KX2.



WHEN THE KXAT2 BOARD IS IN POSITION WITH THE SCREW HOLE OVER THE STANDOFF, PRESS DOWN ON THE PCB TO ENGAGE THE CONNECTORS

**!** WHILE MATING THE CONNECTORS, BE SURE THE EDGE OF THE KXAT2 BOARD DOES NOT MOVE AND STRIKE COMPONENTS ON THE BPF BOARD

