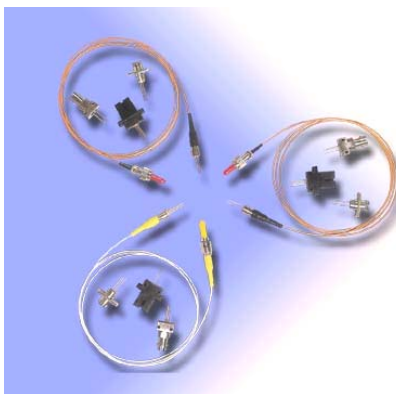




# InGaAs APD PIN-TIA Module

## Features

- High sensitivity
- Automatic gain control
- Wide dynamic range
- Differential output
- Operating temperature range -40°C to 85°C
- Single supply 3.3V
- Hermetically sealed TO-46 package in pigtailed or receptacle housing with FC, ST, SC, LC, MU or SMA connector



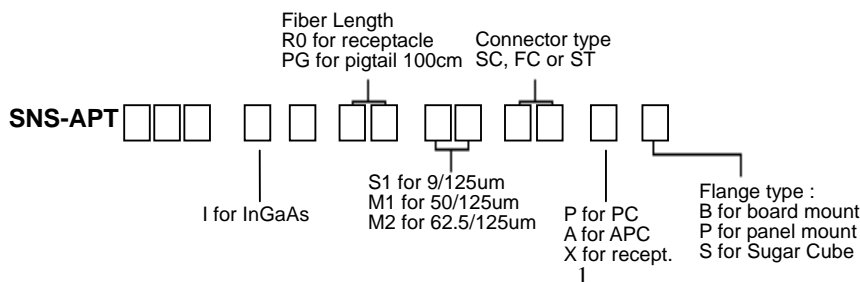
## Specifications (T=25°C , +3.3V)

Parameter	Symbol	Min.	Typ.	Max.	Unit
Gain (differential output)	G	200			mV/uW
Bandwidth	B	1.65	2.05	-	GHz
Low Frequency Cut Off		-	3	5	KHz
Spectral Range	$\lambda$	1150	-	1600	nm
APD Breakdown Voltage		33		46	V
Sensitivity	S				
1.25 Gbps		-37	-	-34	dBm
2.5 Gbps		-	-	-31	dBm
Input overload	P <sub>OL</sub>	-3	0	3	dBm
Power supply current	I <sub>op</sub>	-	45	60	mA

## Absolute Maximum Rating

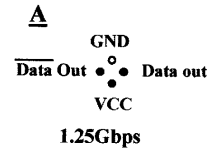
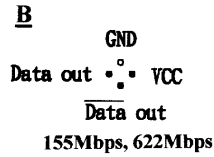
	Symbol	Min.	Max.	Unit
Operating temperature	T <sub>o</sub>	-40	85	°C
Storage temperature	T <sub>stg</sub>	-55	125	°C
Operating voltage	V <sub>F</sub>	0	6.0	V
Optical input power	P <sub>OL</sub>	-	+3	dBm
Lead Soldering Temperature (10 sec)	T <sub>L</sub>	-	260	°C
Supply Voltage				
5V	-	-0.2	7	V
3.3V	-	-0.2	4	V

## Ordering Information



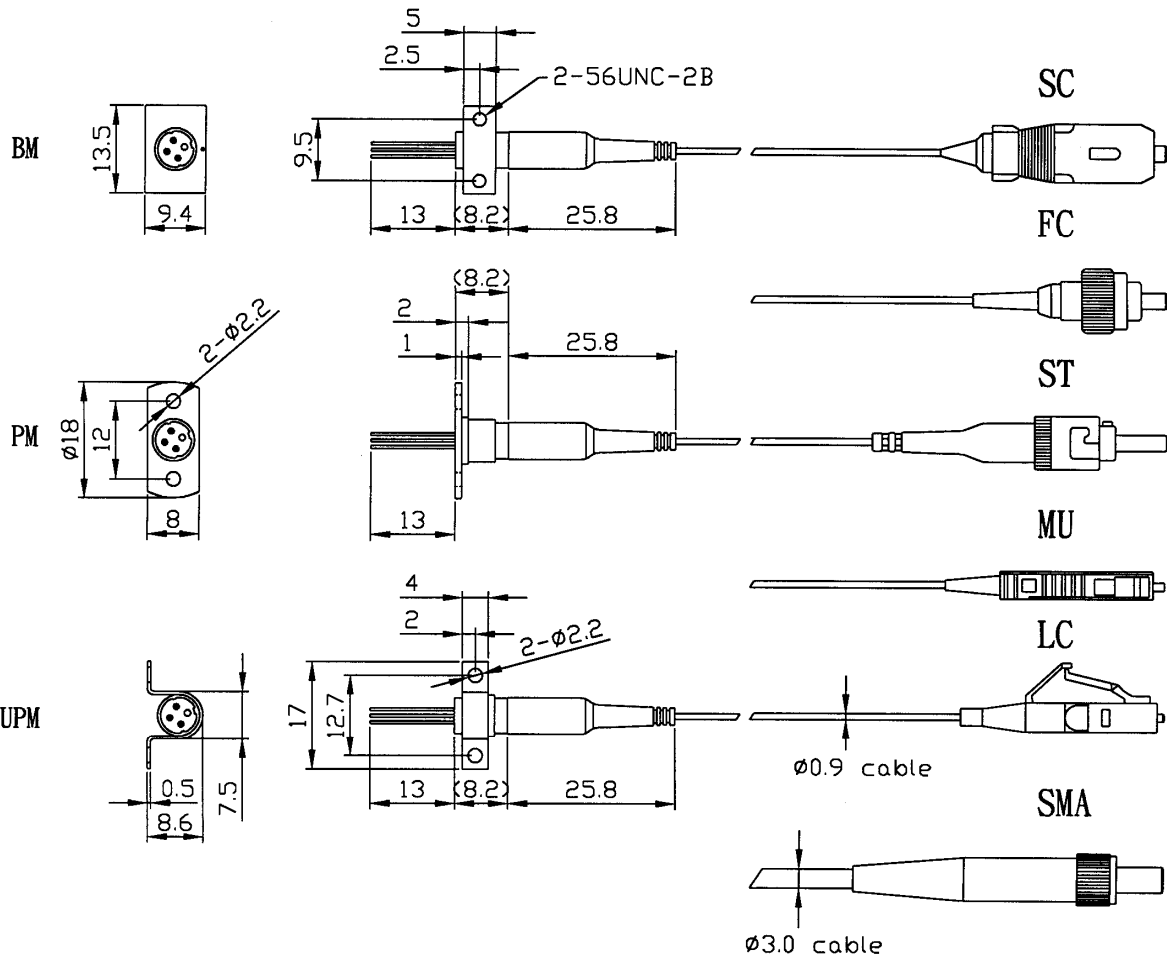
## Pin Connections

**BOTTOM VIEW**



## Dimension

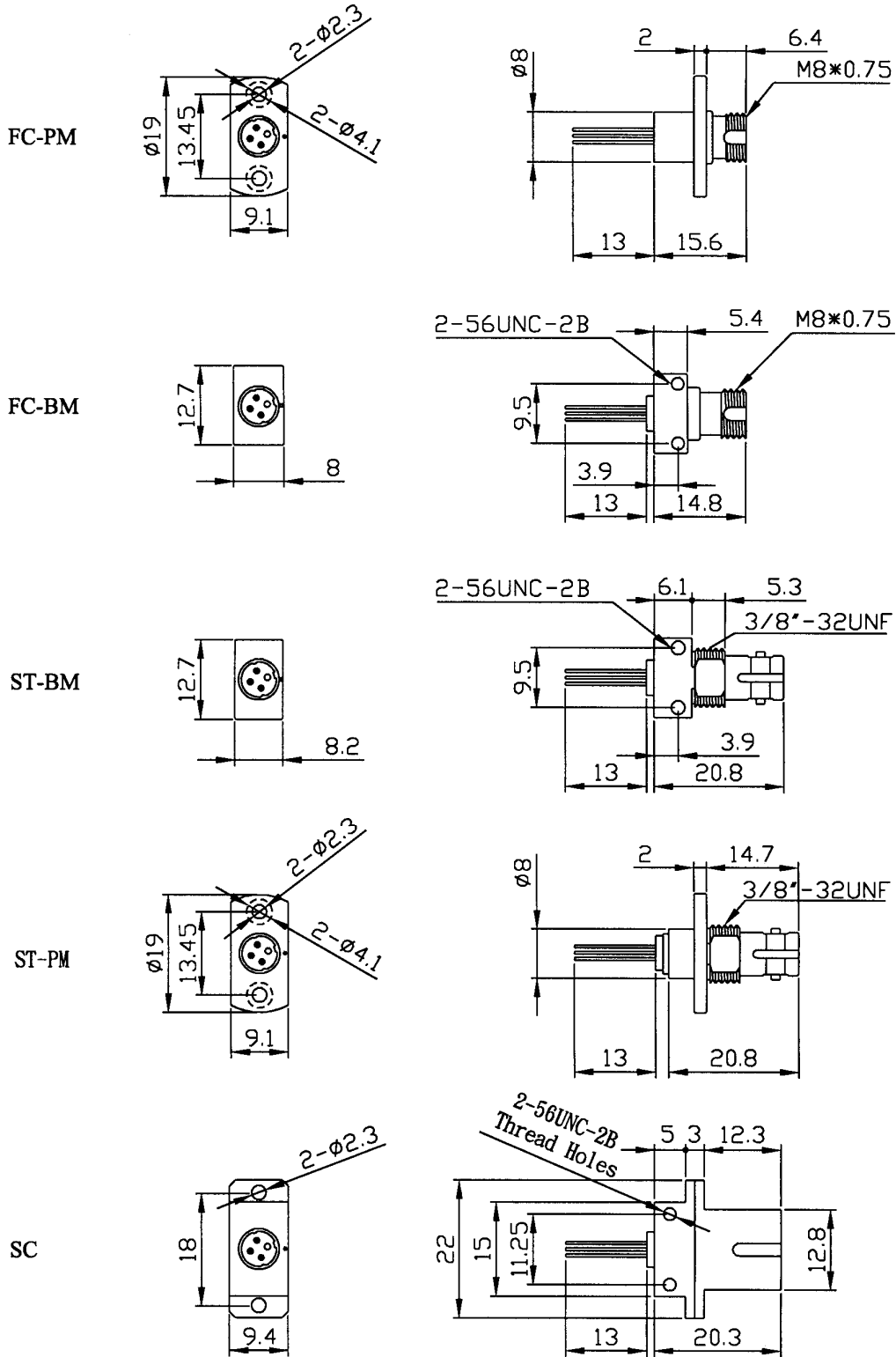
Pigtail Type



InGaAs PIN-TIA Module

# InGaAs APD PIN-TIA Module

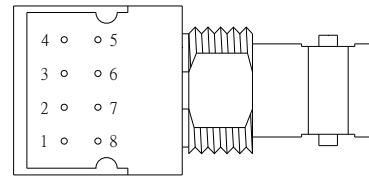
Receptacle Type



## Sugar Cube

### Pin Connections (Type B)

PIN No.	FUNCTION
1	NC
2	SIGNAL
3	Vee (GND)
4	NC
5	NC
6	Vcc
7	Vee (GND)
8	NC



BOTTOM VIEW

### Dimension (ST Receptacle) Unit mm

