

TRENCHLESS SPECIALTY SADDLE

We've got you covered!

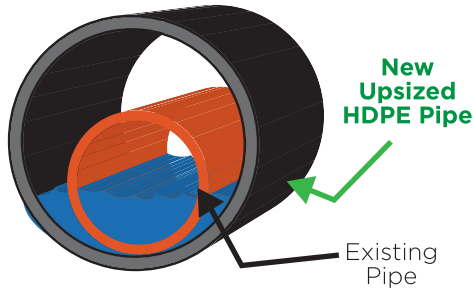
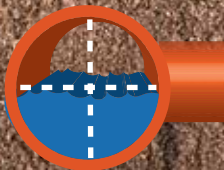


Fig. A

During the trenchless process of pipe bursting, the flow line of the new HDPE pipe most commonly remains at the same elevation as the existing pipe being replaced. In cases of major upsizing in pipe diameter, it is common for the new larger HDPE pipe to expand in an upward direction as shown in Fig A.

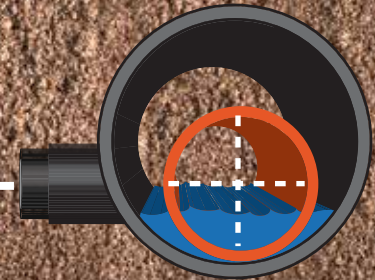
Low-Rider Saddle



Existing sewer pipe connection



New larger HDPE pipe with raised connection point



Faction Low-Rider Saddle connects lower to retain proper slope on side service piping

Because the new HDPE pipe is larger, the connection point on the side of the pipe will be higher in elevation than the connection point on a smaller pipe. To solve this problem, the Faction Low-Rider saddle connects slightly lower than the horizontal centerline (approx. 1"-2") which will accommodate more downward flow for the side service piping and may even eliminate the need to Re-Grade side service piping in some cases.

LOW-RIDER OFFSET

MAINLINE	8"	10"	12"	14"	16"	18"	20"
4"	1"	1.25"	1.5"	1.75"	2"	2.25"	2.5"
6"	NA	1.25"	1.5"	1.75"	2"	2.25"	2.5"