



MINIATURE TWO STAGE *Pressure Reducing Regulators*

4300N SERIES

PREMIER INDUSTRIES

1590 99th Ln NE,
Minneapolis, MN 55449
763-786-4020



*(part number 50-12070 shown
above with optional C10 inlet adapter)*



*(part number 50-11422 shown
above with integrated C10 inlet connection)*



*(part number 50-12705 shown
above with tamper resistant acorn nut)*



MADE IN THE USA

Minneapolis, MN

DESCRIPTION

Premier 4300N Series adjustable, miniature, two stage (1st stage piston, 2nd stage diaphragm) pressure reducing regulators, are designed for precise, low-flow gas delivery. Their compact, two stage design provides precise, stable delivery pressures even as the supply pressure decreases. Premier 4300N Series regulators control inlet pressures up to 3000 PSIG (206.84 bar) and have a flow capacity of Cv 0.04.

Premier 4300N Series regulators are available in a wide variety of materials and configurations, making them ideal for use in labs, industrial monitors, disposable / transportable gas cylinders, and for the regulation of a broad range of media.

FEATURES

- Precise, stable delivery pressure, even as the supply pressure decreases
- Low internal volume promotes quick gas flow stabilization and purging
- Models are available for both corrosive and non-corrosive service.
- Major components are available in numerous materials
- Machined bar stock body, interstage, bonnet and piston eliminates porosity found in castings
- Numerous porting configurations are available
- Integral inlet filter
- Compact size (1¼ in. diameter x 5 in. high)
- Extremely light weight
- Very competitive pricing



MINIATURE TWO STAGE *Pressure Reducing Regulators*



SPECIFICATIONS

- **MAXIMUM INLET PRESSURE:** 3000 PSI (*206.84 bar*)
- **OUTLET PRESSURE RANGES:**
 - 0-10 PSIG (*0 - 0.69 bar*)
 - 0-50 PSIG (*0 - 3.45 bar*)
 - 0-100 PSIG (*0 - 6.89 bar*)
- **LEAK RATE:** Bubble Tight
- **WEIGHT:**
 - Approx. 9 oz. for Aluminum
 - Approx. 1.5 lbs for Brass and Stainless Steel
- **FLOW CAPACITY (Cv):** 0.04

MATERIALS OF CONSTRUCTION

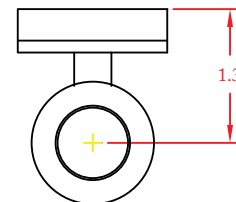
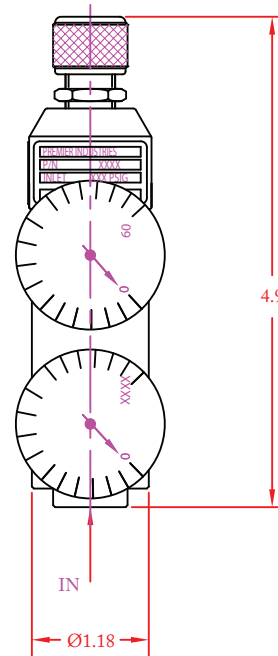
- **BODY OPTIONS:**
 - 303 Stainless Steel
 - 6061-T6 Aluminum / Clear Anodized
- **BONNET:**
 - 6061-T6 Aluminum / Clear Anodized
 - Nickel Plated Aluminum
- **PISTON:**
 - SAE 360 Brass
 - 303 Stainless Steel
- **DIAPHRAGM:**
 - Neoprene (*standard*)
 - PTFE
- **VALVE SEATS:**
 - Neoprene (*Standard*)
 - PTFE
- **INLET FILTER:** 40 Micron Sintered 316 Stainless Steel

PORTING

- **STANDARD INLET PORTING:**
 - 1/4" FNPT (*standard*)
- **OPTIONAL INLET PORTING**
 - 1/8" FNPT
 - C-10 (5/8"-18 UNF) (*Integrated*)
 - All available CGA adapter connections
- **STANDARD OUTLET PORTING:**
 - 1/8" FNPT (*standard*)
- **OPTIONAL OUTLET ADAPTER CONNECTIONS:**
 - 1/8" Hose Barb
 - 3/16" Hose Barb
 - 1/4" Hose Barb

OPTIONS

- Inlet and/or Outlet Gauges
- Anodized Colors for Aluminum Bodies and Bonnets
- Acorn nut for preset outlet pressures: *P/N: 50-12705*
- Private Label
- Other elastomers available upon request



(part number 50-10790 shown above)