



REVENT 703 / E /

Multi Rack Electric Oven

Max pan size: Up to 4 single racks (18"x26"),
2 Double racks (18"x26")

R FEATURES

Baking quality

- > Bakes everything without adjustments.
- > The TCC (Total Convection Control) system ensuring:
 - Even bake
 - Perfectly even coloured products
 - Minimized weight loss
 - Maximized bread volume
- > The HVS (High Volume Steam) system ensuring:
 - Excellent texture
 - Excellent crust

Total Cost of Ownership

- > Perfect bake without rejects.
- > Industry leading availability and output for 24/7 production.
- > Most flexible choice for a diversified bakery assortment.
- > Simple handling with self-instructive GIAC control panel.
- > Renowned durability with the longest life expectancy on the market.
- > World leading energy efficiency.
- > Energy save mode.
- > Minimized service cost.
- > Fast assembly through Revent's unique wedge system. Quick and easy installation.

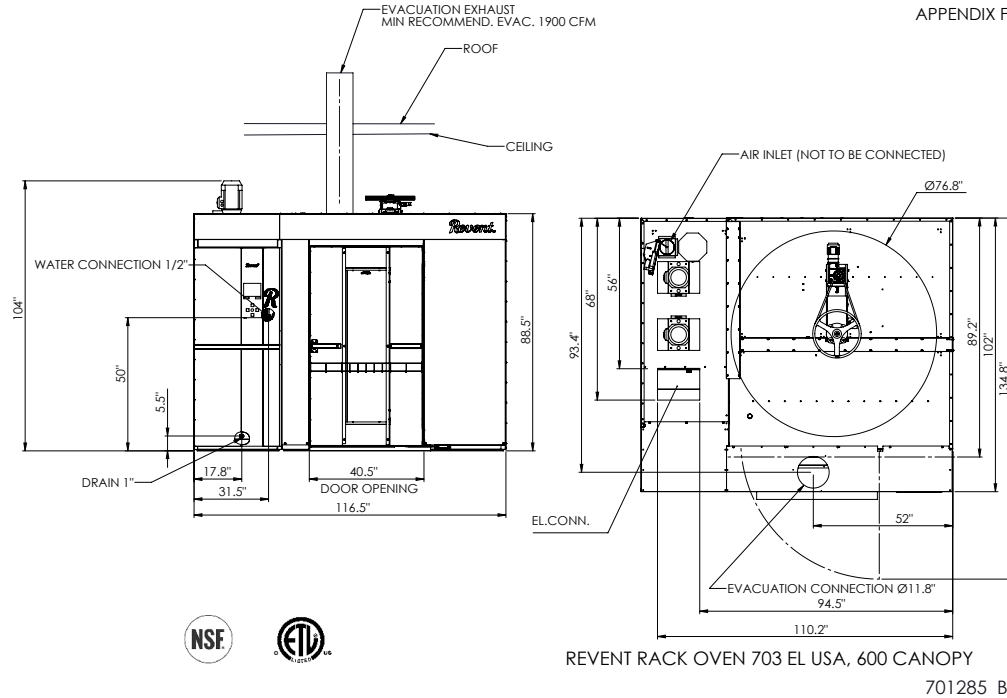
Options

- > Platform for (3) 800x600 mm racks
- > Heavy Duty Steam system
- > GIAC extended PC software
- > Pass-through version
- > Core temp sensor kit. (Requires F-lift or platform)
- > Prison package
- > USDA package (Upgrade of steel to A304)



In Bread We Trust

APPENDIX F



Specifications

Maximum Heat Capacity	120 kW
Temperature range	95-572°F
Total shipping weight	5950 lbs*
Minimum intake opening	49.2" x 85.5"
	(standard 3-section + steam box delivery)
Minimum intake opening	93"x102.4"(optional one-piece shipment)
Minimum section tilt up height:	137.8" (without motor)
Swing Diameter	76.8"
Max load of platform	1764 lbs
Steam Generation	2.9gals/20sec at 482°F

***Final shipping**
Weights will depend on the final order specifications.
Continuous product development is a Revent policy. Therefore, we reserve the right to change specifications and/or design without prior notice. Pictures or drawings may include product options.

Utility requirements

Electrical	
Standard	3PH208-220V+N 158A+177A
Optional	3PH440-480V 77A+87A +1PH/120V/60 Hz 15A
Contact factory for other power options	
Water and Drain	
Water Supply	1/2"NPT ø 60-65 PSI cold
Drain	1" NPT, optional connection to rear
Water quality	pH 7-8.5 Hardness 4-7 gr/gals. Acceptable range for chloride concentration 0-50 ppm
Ventilation	
Over Pressure Duct	Through door to canopy
Oven Damper Exhaust	Through door to canopy
Canopy vent	12" connection. Min 2355 cfm required. Customer to provide duct and ventilator fan per local code.

Installation requirements

The oven must be installed on a levelled non-combustible surface. The oven may be installed flush against a wall. Only the front and top need to be left open for access. The space on top of the oven must be well ventilated and the temperature must not exceed 120°F. This is to avoid damage to electric components.

Revent sales representative:



Revent Incorporated
100 Ethel Road West, Piscataway, New Jersey 08854
Phone (732) 777-9433, Fax (732) 777-1187
Toll Free 800-822-9642
E-mail info@revent.com, www.revent.com