

Installation Guide Cabinet Latches

Assembly

Please see the diagram for assembly order.

Spacers and Door Thickness

Please see the table below for how many spacers are recommended based on your door thickness.

Door Thickness (G)	Plate Spacer Qty (B)	Ring Spacer Qty (C)
1/2"	4	-
5/8"	2	-
3/4"	-	-
7/8"	-	2
1"	-	4

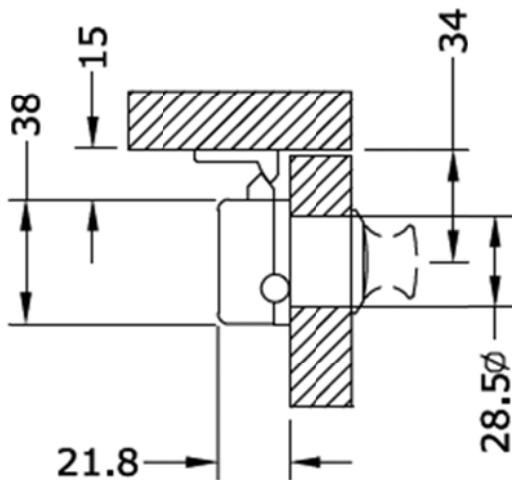
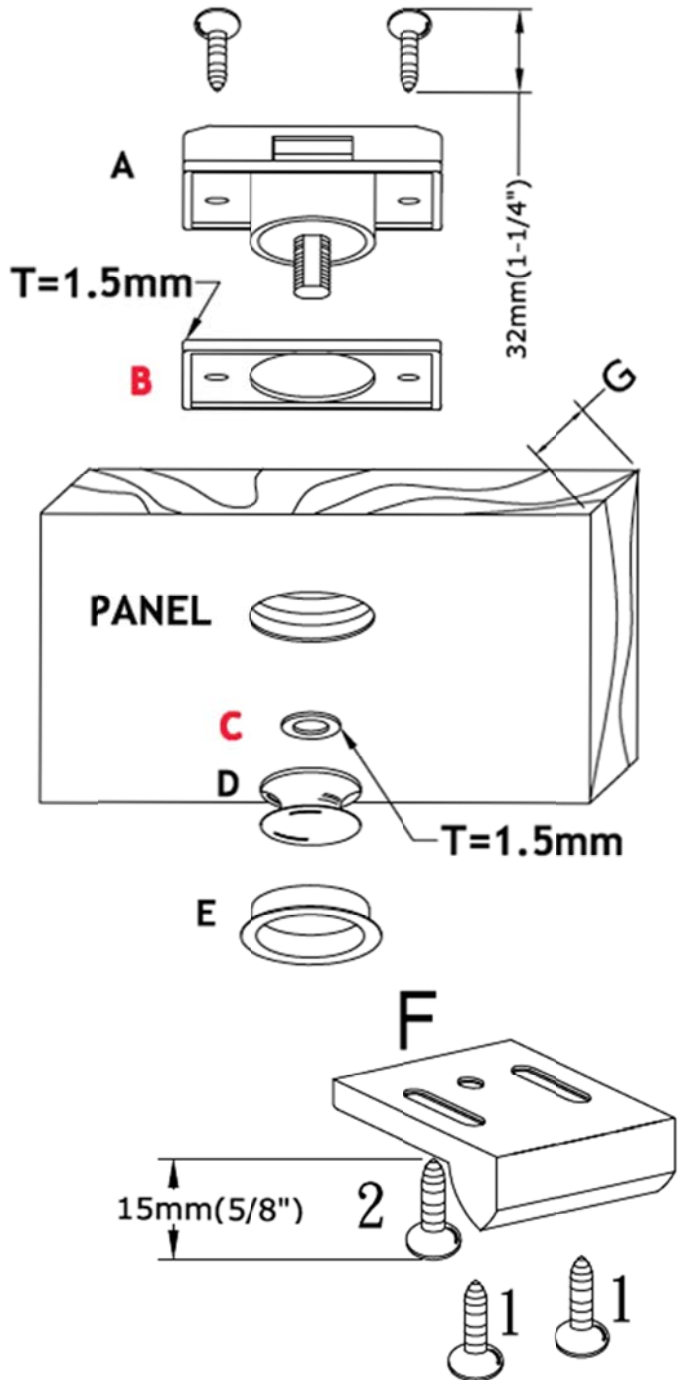


Diagram in millimeters (mm)



Installation Instructions

Recommended to best avoid any scratches on the painted door

1. Put together the Body (A) with the required Plate Spacers (B) on the back side
2. Put together Ring Spacers (C) and Knob (D) on. Now the latch is held in place temporarily for step 3.
Do not put Trim Ring on yet (E)
3. Now the latch is temporarily held to fasten the two screws to the back of the latch Body (A)
4. Remove Ring Spacer (C) and Knob (D). Now you can finish painting the door panel.
5. Once painting is complete, please assemble the Ring Spacer (C), the Knob (D), and the Trim Ring (E).