

We have conducted over 175 clinical trials from early phase drug and device development to post-marketing trials designed to garner reimbursement.

Randomized Clinical Trial evaluating the efficacy of fresh amniotic membrane versus standard of care in the treatment of diabetic foot ulcers. Enrollment complete.

Mechanism of action trial evaluating light therapy in the treatment of venous leg and diabetic foot ulcers. This translational trial is designed to assess the changes in the wound microenvironment (e.g. growth factors, proteases) and microbiome over the course of treatment.

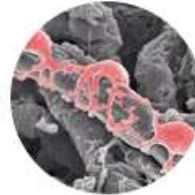
A prospective, single-blind, multi-center clinical study evaluating the use of MolecuLight i:X as an adjunctive fluorescence imaging tool to clinical signs and symptoms for the identification of bacteria containing wounds. Enrollment complete: 350 patients in 8 months.

An Open-Label, Prospective, Multicenter, Safety and Tolerability Study of ExpressGraft-C9T1 Skin Tissue in the Treatment of Diabetic Foot Ulcers. ExpressGraft is a genetically modified tissue which expresses enhanced host defense peptides.

A Randomised Controlled Multicentre Trial, Examining the Effect of Natrox® Oxygen Wound Therapy on the Healing Rate of Chronic Diabetic Foot Ulcers. NOW.T-001. Enrollment to begin May 2019.

Retrospective analysis of the use of DermaPure in spinal fusion procedures. In progress.

A Prospective, Open Label, Multicenter trial for evaluating the Efficacy of Treating and Managing Wounds in Elderly Population in Specialized Nursing Facilities Using RedDress Wound Care System. This is one of only a few wound care trials conducted in a skilled nursing facility. Enrollment completed January



Pathway to Success

- Extensive network of sites in US, including Puerto Rico, Colombia, and Bahamas.
- Efficient site selection & startup
- Centralized trial management & real-time updates.
- Patient-focused strategies to optimize recruitment.

125 Cambridge Park Drive
Suite 301
Cambridge, MA 02140
617-945-5225 ph
617-714 fax
www.serenagroups.com

World-Class Research

We are a premier wound care collaborative group in the United States and are quickly becoming the most sought after research company in the world.

Streamlined and centralized process from study start-up to close-out

"In a recent clinical trial, it took less than one month from contract execution to IRB approval and first patient enrolled." Thomas E. Serena, MD

OPTIMIZED RECRUITMENT

SerenaGroup® offers targeted marketing, including tv, radio, online advertisement, social media, and referral outreach to optimize enrollment.

DIGITAL PLANIMETRY

SerenaGroup® leads the field in photographic imaging, data acquisition and analysis. In addition, we have the capability to perform sophisticated economic analysis of the trial data.



WOUND CARE EXPERIENCE

SerenaGroup® is an industry leader in implementing and managing wound care studies. We can contribute extensively from both scientific and management perspectives. SerenaGroup® publishes an average of 10 manuscripts annually. The majority of these publications focus on clinical trial results as well as review articles on the subject under study.

SerenaGroup® has the capability to perform a broad range of clinical services including:

Project Management
Regulatory Support
Clinical Monitoring

Data Management
Statistical Analysis
Medical Writing

PERSONALIZED SOLUTIONS

We offer personalized solutions, tailoring our recommendations based on your needs. SerenaGroup® has established relationships with experienced PIs across the globe. There is no lengthy contracting process when starting a study; the sites simply sign a study addendum.

TRIAL MANAGEMENT

Our team has the experience to promote faster start-up and drive your study to a successful and timely completion. You will have a central point of contact. You have thorough support during the study. Our dedicated study team will have weekly or bi-weekly teleconference on the project.

REAL-TIME TRACKING

SerenaGroup® offers customized online platforms and centralized communication. Study progress, enrollment and screen failure are reported in real-time.