

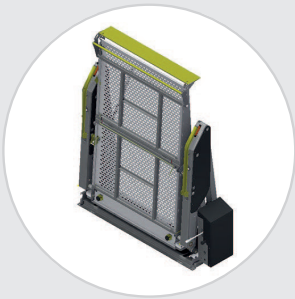
# Revability & Mobility Networks

iClass S, iClass SP, and iClass F Lifts

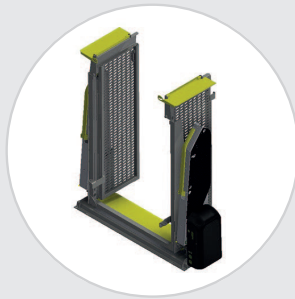


iCLASS™

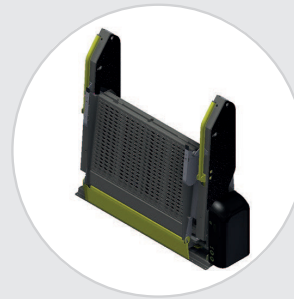
The iCLASS Inboard Lift has been designed to suit VMI's consumer and commercial vehicles. The iCLASS features an intelligent ECU, bluetooth enabled operation and fully compliant with FMVSS requirements. iCLASS platform types include: Standard (S), Split (SP) and Folded (FP)



**iClass S**  
Solid Platform



**iClass SP**  
Split Platform



**iClass F**  
Folded Platform

VEHICLE LIFT MATRIX		iClass S	iClass SP	iClass F
SIDE ENTRY	Chevy Express - 1997 - 2019	✓	✓	✓
	Dodge Promaster - 2014 +	✓	✓	✓
	Ford E-Series - 1997 - 2014	✓	✓	✓
	Ford Transit - 2014 +	✓	✓	✓
	GMC Savanna - 1997 +	✓	✓	✓
	Mercedes Sprinter - 2014 +	✓	✓	✓
REAR ENTRY*	Chevy Express - 1997 - 2019	✓	✓	✓
	Dodge Promaster - 2014 +	✓	✓	✓
	Ford E-Series - 1997 - 2014	✓	✓	✓
	Ford Transit - 2014 +	✓	✓	✓
	GMC Savanna - 1997 +	✓	✓	✓
	Mercedes Metris - 2016 +	✓	✓	✓
	Mercedes Sprinter - 2014 +	✓	✓	✓
Cut-Away Chassis		✓	✓	✓

## Mobility Networks Lift Features & Benefits

- » FMVSS 403 approved by independent test lab
- » Intelligent programmable ECU
- » All models standard with 1000lb capacity
- » Interchangeable handrails for consumer and commercial use
- » High intensity LED strip lighting to illuminate entryway
- » High intensity LED frog (spot) lighting to illuminate platform
- » Automatic platform reset system
- » Adjustable anti-rattle platform blocks
- » Outer roll stop locking mechanism with adjustable anti-rattle blocks
- » Power pack available as 12v or 24v and configurable to left or right of the lift
- » Bluetooth enabled ECU

\*Bumper configuration confirmation required. Information is subject to change.  
© 2019 Vantage Mobility International. All rights reserved.

# Smart Mobility by Revability

iClass DPA Lifts



	ICLASS	BRAUN
<b>CERTIFICATIONS</b>		
FMVSS 403 Compliant (USA)	✓	✓
2006/42/CE Directive (International)	✓	✗
ISO 9001 Quality Management	✓	✗
ISO 14001 2015 Environmental Management	✓	✗
Independent Test Lab Certified	✓	✗
<b>ELECTRONICS</b>		
Intelligent Programmable ECU	✓	✗
Bluetooth Technology	✓	✗
State of Systems Display	✓	✗
Programmable Operations	✓	✗
Tablet Based Diagnostics	✓	✗
<b>SAFETY</b>		
LED Entrance Strip Lighting	✓	✗
LED Amber Operational Bars	✓	✗
LED Platform Spot (Frog) Lights	✓	✓
ECU "Sensitive Floor" Interlock	✓	✗
ECU Interfaced Platform Load Switch	✓	✗
Lay Flat Deployed Roll Stop	✓	✗
Visual Dual Stripping	✓	✗
Dual Handrails	✓	✓
Cable Cinches	✓	✗
Easy Access Manual Release	✓	✓
<b>DOOR OPERATORS</b>		
Side Sliding	✓	✗
Side Swing	✓	✗
Rear Swing	✓	✗

	ICLASS	BRAUN
<b>PLATFORM</b>		
Ultra-Quiet Operation	✓	✓
Smooth Operation	✓	✓
1000# (454Kg) Capacity	✓	✓
Unique Non-Slip Design	✓	✗
Dual Anti-Rattle Platform Blocks	✓	✓
Automatic Platform Reset System	✓	✗
Split Platform Allows Easy Entrance/Exit	✓	✗
Folding Model - Unobstructed View	✓	✓
Automatic Hydraulic Roll Stop*	✓	✓
Automatic Locking Mechanism	✓	✓
Outer Roll Anti-Rattle Stops	✓	✗
<b>LIGHTING</b>		
LED Entrance Strip Lighting	✓	✗
LED Amber Operational Bars	✓	✗
LED Platform Spot (Frog) Lights	✓	✓
<b>SERVICE &amp; MAINTENANCE CONVENIENCE</b>		
ECU Programmable Operation	✓	✗
ECU Maintenance Notification	✓	✗
Bluetooth Interface	✓	✗
State of Systems Display	✓	✗
Easily Interchangeable Handrails	✓	✗
EZ Access Interlock Interface	✓	✓
Easy Removable Power Pack Cover	✓	✓
Easy Access Resettable Fuses	✓	✗
Exterior On/Off Power Switch	✓	✓
Easy Accessible Manual Pump Handle	✓	✗
EZ Access / Adjustable Anti-Rattle Blocks	✓	✗
Installation / Drill Template Included	✓	✗

\*S & SP models only.  
Competitive analysis as of 11/15/19. © 2019 Vantage Mobility International. All rights reserved.