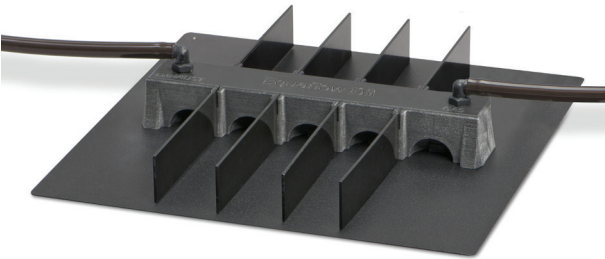


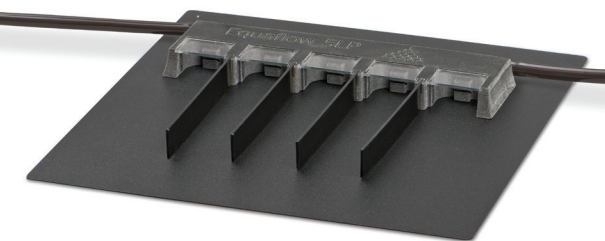
RODENT ANESTHESIA MANIFOLDS*



EQUAFLOW 10M



EQUAFLOW 3I



EQUAFLOW 5LP

SAFETY

- ✓ Meets NIOSH standards for waste gas safety, when used properly.
- ✓ Hyper branched active scavenging to each nose cone assuring compliance and user safety.
- ✓ Hyper branched equal gas delivery to each nose cone prevents animal awakening.
- ✓ Animals lay in a flat, natural position during anesthesia (no head torqueing).

FEATURES

- ✓ Optical imaging compatible (from above or below).
- ✓ Non-auto fluorescent/luminescent material.
- ✓ Effective design allows for lower flow rates and less usage of anesthetic agent.
- ✓ Available in 3 I (125mm FOV), 3XL, 5, 5LP 10 (200mm FOV) and 10XL (250mm FOV) port configurations.
- ✓ Integrated magnets assuring consistent manifold and mouse placement on base plate.
- ✓ Single port designs for mice and rats.
- ✓ Includes Manifold, dividers, magnetic positioners for animals, tubing and black base plate.

*SOMNI EPS 3 or attenuated vacuum system required for use.

SOMNI PROVIDES UNPARALLELED CUSTOMER SERVICE, CLINICAL AND TECHNICAL SUPPORT.

For more information or pricing, please contact our sales team.

☎ 1-877-637-3625 ✉ info@somniscientific.com

🌐 www.somniscientific.com



*Proudly manufactured
in the USA*