

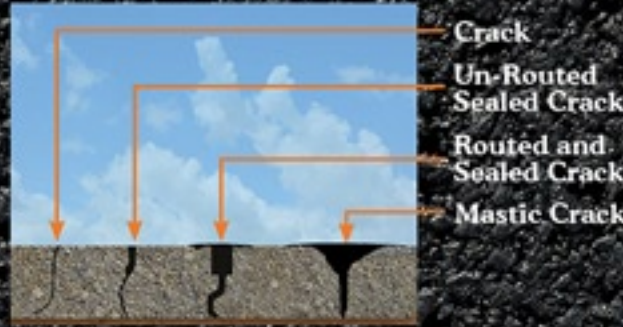
Asphalt Paving

From driveways to parking lots to athletic complexes and streets. No job is too big or too small. **SealPros Inc.** has over 40 years of combined experience and is one of the area's only full service asphalt paving and complete asphalt maintenance crews. Whether it is a new surface or improving an old one, **SealPros Inc.** can take care of you.



Crack Sealing

Cracks greater than 1/4 inch to 3/4 inch are routed, cleaned and sealed with a quality product to protect your asphalt from future damage from moisture.



Mastic

Mastic can be applied to wide cracks 1 inch or greater, cupping, depressions, small voids, potholes, and open seams. Mastic is a more durable and substantial repair solution than traditional crack sealants.



Sealcoating

A sealcoat can be applied in many different ways, there is only one right way! The first application, a squeegee machine, fills the voids of the asphalt. The second application (called wearing coarse) is sprayed on to give protection from harsh winters and snow removal. When these two applications are implemented you are left with asphalt that has been properly sealed.



A Pavement Maintenance Program that includes Periodic Sealcoating and Crack Filling will more than double the service life of Asphalt.



Asphalt Patching

SealPros Inc. maintenance crew will remove patches and replace them with new asphalt.



SealPros Inc.
Asphalt Paving