

Optimal H-2A Applications

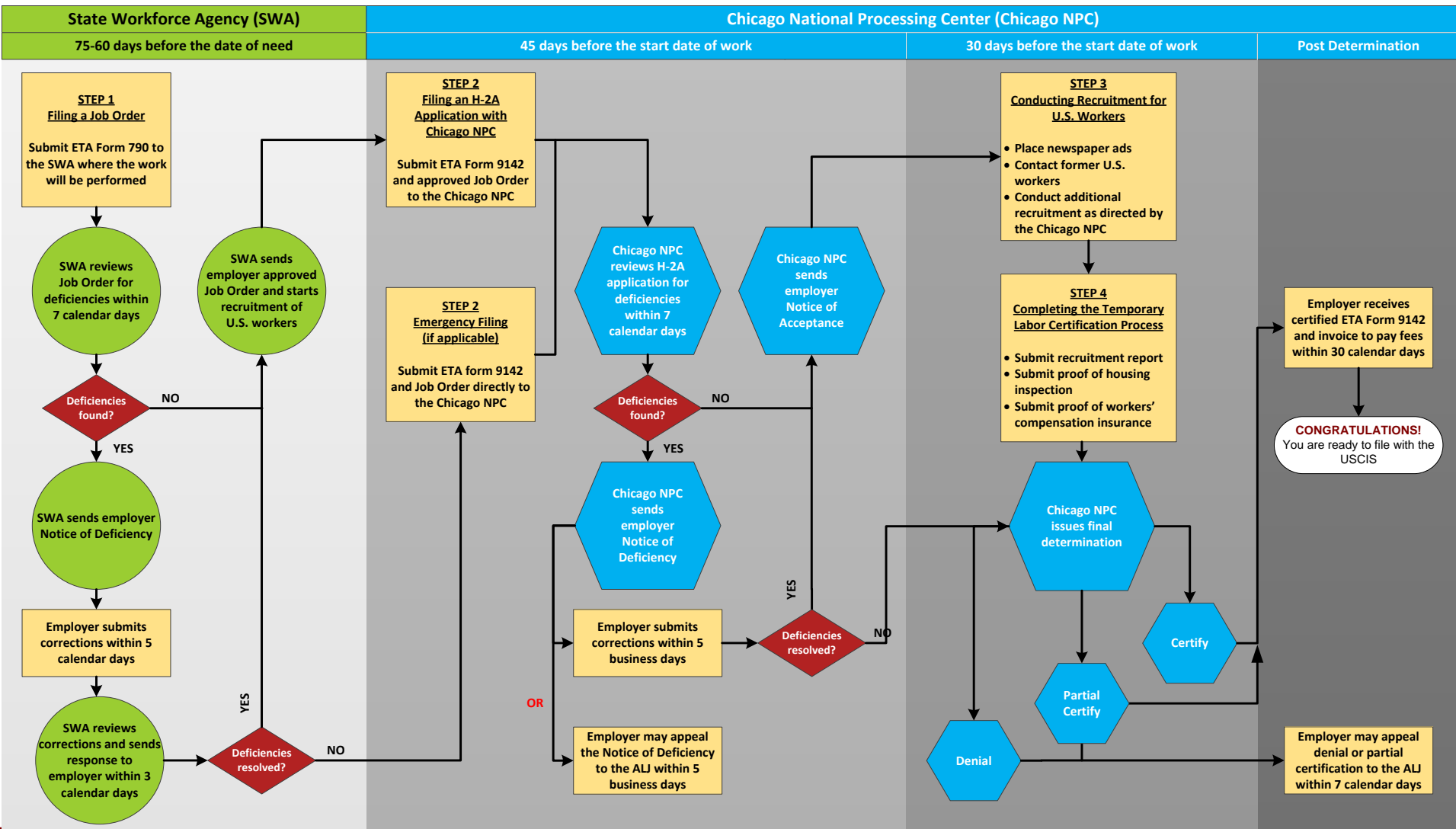
Kerri Owen

Foreign Labor Certification Coordinator

Workforce Development Programs

Colorado Department of Labor and Employment

H-2A Labor Certification Process



Legend: = Employer Actions = SWA Actions = Chicago NPC Actions

Filing a Job Order with the SWA

No more than 75 calendar days and no fewer than 60 calendar days before the date of need, an employer will:

- Submit a completed ETA Form 790 *Agricultural and Food Processing Clearance Order* to the SWA severing the area of intended employment in the FLAG system.
 - <https://www.foreignlaborcert.doleta.gov/pdfs/ETA-790-instructions-addendums.pdf>
- Please email CDLE at cdle_flg@state.co.us to notify us of your recent submission.
- Request scheduling of a housing inspection by the SWA or local inspector.
- You can submit ETA 790 and 9142 Form to Chicago through <https://flag.dol.gov/>.

Housing Inspection Process

- The employer may contact the local inspector/SWA to schedule a pre-inspection and/or inspection.
- OR
- The local inspector will contact the employer to schedule the housing inspection.
 - The housing inspection **MUST** be completed by at least 32 calendar days prior to the start date of need.

How to Avoid Common Deficiencies

- Ensure ETA Form 790 is completely filled in with correct dates, addresses, and information per regulatory requirements.
 - Refer to ETA 790- Agricultural and Food Processing Clearance Order Review Checklist link below.
 - <https://foreignlaborcert.doleta.gov/pdf/ETA-790-790A%20General%20Instructions.pdf>.
- The housing inspection address **MUST** match the address listed on the ETA Form 790 (Pg. 2, Section D, #1).
- Respond to all notifications/requests from the Chicago National Processing Center and/or SWA by the deadline given.

Colorado SWA Contact Information

Kerri Owen

Foreign Labor Certification Coordinator

303.318.8961

Kerri.owen@state.co.us

Tanya Boroff

Foreign Labor Certification Specialist

303.318.8868

Tanya.boroff@state.co.us

<https://www.foreignlaborcert.doleta.gov/h-2a.cfm>