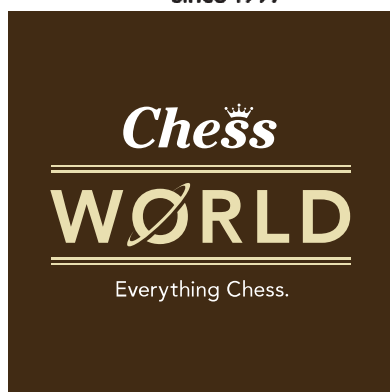




Building Mental Muscles™  
since 1997



## Melbourne Cup Weekend Chess!

Run by the Elwood Chess Club, sponsored by Bendigo Bank.  
The 'Cup Weekend Chess Tournament' is one NOT to miss!

[www.chesskids.com.au](http://www.chesskids.com.au)

### Editorial

You will notice a change in our logo and graphic design in the next few months; leading up to a full re-launch of the Chess Group of Companies visual brand in 2008. The logo isn't the only thing to undergo a renovation - our web-site, email system and even internal administration is all being updated!

Our old logo served us well (created in 1977 by Geoff Cook), but it was decided that a new, more modern look was required as we move into our second decade of operation. The new images adds color and movement which reflects our key operational objectives; engaging kids and having fun!

The Group operates a number of business activities - the main ones being:

Chess Kids - coaching programs and events for schools and individual players

Chess World - the only specialty Chess retailer in Victoria and largest in Australia. In the future most sales will be online, through [www.chessworld.com.au](http://www.chessworld.com.au)

Interschool Chess - Run by Chess Kids, the National Interschool Championships is the largest tournament in Australia with over 10,000 participants each year!

iChess - our new, and still evolving, online chess coaching program

You can expect to see more products listed in the next 12 months. Our goal is to build life-long relationships with all those interested in chess, from the day they learn for the rest of their life!

- David Cordover

### This issue...

#### FOCUS on Female Chess Players

"Judith's attacks are the ultimate in terms of viciousness ... surviving her attack is almost impossible.

Her aggressive style is so intimidating that the most important thing is to remain calm ... the worst part is that she exploits every tiny mistake that you make."

Grandmaster Schwartzman

...read more on Page 2

### Inside This Issue

Judit Polgar	Page 2	The Birth of the Chess Queen	Page 3
Who Am I?	Page 3	Boden's Mate	Page 4
Life Lessons from Chess	Page 4	Puzzle Page	Page 5
Chess in Motion	Page 6	Spring Specials	Page 8

# Judit Polgar - *The Queen of Chess*

By Robert Harle

Judit Polgar was born in Hungary on July 23, 1976 and many say might become the first female World Champion!

She and her two sisters, Sofia and Zsuzsa (Susan), received an education at home from their parents, Laszlo and Klara. Chess was their specialist subject. By the time Judit was 5 years old, she was already beating her father at chess. At the age of 9 she competed and won the unranked division of the New York Open Chess Tournament. At the age of just 11 years old, she achieved her first win against a Grandmaster, Viadmir Koracevic.

Polgar has always preferred playing in men's events. At the age of 13 she won the World Under 14 Championship for boys. When she was a young player, a Grandmaster brought a plastic dinosaur to their game because Judit kept a stuffed animal at her side!

Polgar received the title of Chess Grandmaster in 1991 at the age of just 15 years and 4 months. This beat the previous record for the youngest Grandmaster, set in 1958 by the great Bobby Fischer from the United States at 15 years and 6 months. In 1993 she defeated former World Champion Boris Spassky 5.5 points to 4.5 in a 10 game match and took home the handy sum of \$120,000.

In 1994 she suffered a controversial defeat at the hands of the then World Champion Gary Kasparov. Kasparov changed his mind after making a losing move with his knight and then made another move with this piece instead. According to the rules of chess, once a player has released a piece he or she cannot make a different move (touch-move rule), so Kasparov should have been made to play his original move. Judit did not challenge Kasparov's new move because she says there were no witnesses and a tournament official could not be found. She was also unaware that Kasparov's second move had been

caught on tape by a television camera!

In 1998 she continued to break new ground by winning the United States Open Chess Championship, the only women in history to do so. In the same year she played a match against former World Champion Anatoly Karpov and won 5.0 points to 3.0.

In 2003 she was ranked the 10th best player in the world, the first women ever to enter the World's Top Ten. By July 2005 she had moved to number 8 in the world. In September 2005, her high ranking was rewarded when she became the first woman to play in a tournament to decide who would challenge Vladimir Kramnik for the title of World Champion. Unfortunately, she was eliminated from the contest early on. In May-June 2007 she again played in the tournament for the World Championships but was eliminated by Evgeny Bareev by 3.5 to 2.5.

Judit is known for her aggressive style of play and competitive nature and this has earned her respect and admiration from other players and fans. The following game was played by Judit Polgar at the age of 12 at the Chess Olympics held at Thessaloniki in Greece in 1988 :

## Polgar - Angelova

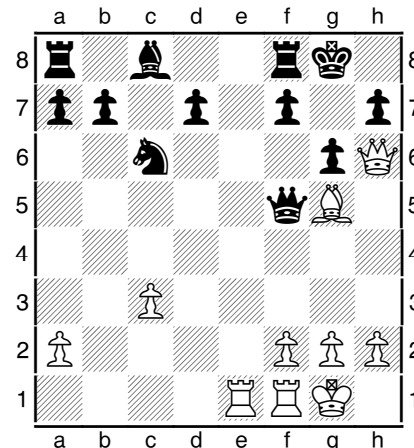
**1.e4 c5 2.Nf3 Nc6 3.Bb5**

Instead of playing the usual d4, Judit steers the game in a different direction by bringing out her bishop.

**3...g6 4.0-0 Bg7 5.c3 e5 6.d4 exd4 7.cxd4 Nxd4 8.Nxd4 cxd4 9.e5 Ne7 10.Bg5 0-0 11.Qxd4 Nc6 12.Qh4 Qb6 13.Nc3 Bxe5 14.Rae1 Bxc3 15.bxc3 Qxb5**

Black has an extra knight but Judit now attacks her opponent's King. With the Black Bishop no longer on g7, the Black squares around the Black King f6-h6-g7-f8-h8 are weak.

**16.Qh6 Qf5**



## 17.Qxf8+

A beautiful Queen sacrifice to finish the game!

**17...Kxf8 18.Bh6+ Kg8 19 Re8# 1-0**

If Black had tried to avoid the checkmate by playing 16...f5 instead, then White can play 17.Bf6 Rxf6 then 18.Re8+ Kf7 19 Qf8#.



# Birth of the Chess Queen

By Andrew LeRoy

Everyone loves their Queen in Chess. I am no exception. This article examines her origins.

Historians can trace the evolution of Chess to a game called Chaturanga which was played in India in 500 A.D. This makes Chess 1500 years old!

If you sat down to play Chaturanga you would notice some differences. For starters you would have three opponents instead of one.

Soon after 500 A.D. Chaturanga became a two player game, but the movement of the pieces is very different to modern Chess. Essentially what has been happening over 1500 years is that people have been inventing new ways to play and testing if they are more fun.

If the new rule of play is more fun then it gains popularity and eventually takes over as the official way to play; if not then it fades away.

By 1000 A.D. Chess was well established in Europe. Around this time the piece called the Vizier, which only moved one square at a time in a diagonal fashion, started to be called

the Queen.

During the reign of Queen Isabella of Castile (1451-1504) players in her region began to play "Mad Queen" chess. Instead of the weak Vizier type move the Queen could move as she does today. This was a massive change in her powers and the move was doubtless invented to reflect the awe that Queen Isabella's impressive reign had on her subjects.

Well, this move made the game outrageously more attacking. The hot blooded players of this Spanish region loved it. As they travelled through Europe they introduced the new move to other regions. The new move caught on like wild fire and the invention of traps like the Scholars' Mate and other very short checkmate attacks were the delight of all players. Forks and pins became far more common and the game much more exciting. At any moment you could find a surprise tactic or even a checkmate combination.

"De la dama" - lady's chess had replaced "del Viejo" (the old rules) as the most popular way to play and was

here to stay.

This was last major change to the rules of Chess. No one has come up with a more popular version of the game since then (500 years!).

People play all sorts of Chess variants like Rifle Chess, Snowball Chess, Take Me Chess, Transfer Chess etc but none has overtaken De la dama as yet. Maybe none ever will?

In my experience the most popular version apart from orthodox chess is Transfer Chess. Will the game go full circle and return to a four player game some day. Who can say? All that can be said is that Chess is infinite in its ability to entertain and if our current version ever loses appeal the game will just redefine itself to meet our needs.



## Who Am I?

*See how many clues you need before you can guess who I am.*

**King:**

I was born in Moscow in 1906 and at the age of 15 won the British Girls Masters.

**Queen:**

I have been referred to as the god-mother of modern women's chess.

**Bishop:**

In 1927 I won the newly found first Women's World Championship and thereafter won every Women's World Championship until my death.

**Knight:**

A mythical club consisting of all the

masters I have defeated is named after me.

**Pawn:**

The trophy for the winning team in the Women's Chess Olympiad is also named after me. I am Vera ...



## What Am I?

If you deliberately touch a piece you must move it.

If you accidentally knock a piece you do not have to move it.

After making a move and releasing the piece you cannot undo the move.

If you deliberately touch one of your opponent's pieces then you must capture it if you can.

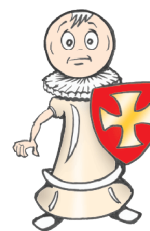
**(Answers on Page 8)**

By Duncan Standley

# Chess Kids Coaching

## "Boden's Mate"

By Carl Gorka



## Life Lessons from Chess

By David Cordover

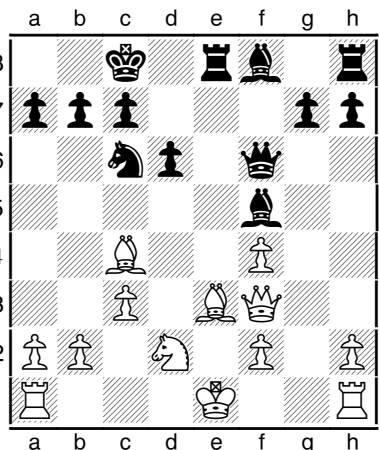
When players castle on the queen side they are usually looking for an attacking game. One thing they have to be prepared for is Boden's mate.

It was 1860 when Samuel Boden first played his queen sacrifice that impressed all of the chess world. If you learn the basics, you too can use it. Look for your opponent to castle queen side and to have moved his c-pawn one square. Get your bishop to a square where it cuts off the king's escape square. Make sure your other bishop can deliver checkmate.

### Schulder - Boden, Samuel

London 1860

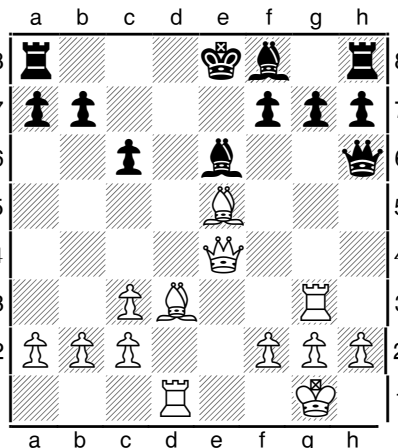
**1.e4 e5 2.Nf3 d6 3.c3 4.Bc4 Nf6 5.d4 fxe4 6.dxe5 6...exf3 7.exf6 Qxf6 8.gxf3 Nc6 9.f4 Bd7 10.Be3 0-0-0 11.Nd2 Re8 12.Qf3 Bf5**



**13.0-0-0?** Falling into Boden's trap **13...d5!** This clears the way for the f8 bishop **14.Bxd5 Qxc3+!!** Here is the queen sacrifice named after Samuel Boden who first played it in this game. **15.bxc3** But now Black can bring his bishop in to checkmate. Notice how the bishops cut across each others path **15..Ba3# 0-1**

### Lasker, Ed - Englund, F

Scheveningen 1913

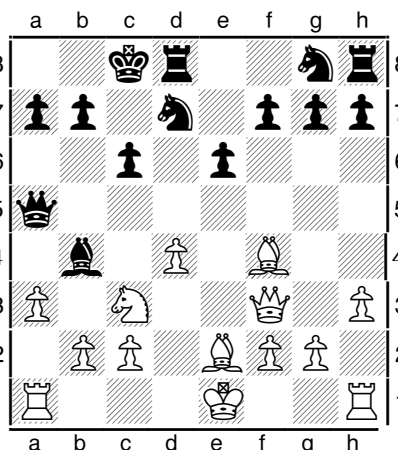


**19...0-0-0** Can you see why this is a mistake? **20.Qxc6+!** Boden's queen sacrifice in action again **bx c6 21.Ba6# 1-0**

### Esteban Canal - Anon

Simultaneous Budapest, 1934

**1.e4 d5 2.exd5 Qxd5 3.Nc3 Qa5 4.d4 c6 5.Nf3 Bg4 6.Bf4 e6 7.h3 Bxf3 8.Qxf3 Bb4 9.Be2 Nd7 10.a3 0-0-0**



Here, things don't quite work out because Black's queen is protecting a6. So White distracts the queen by sacrificing both his rooks, and then his queen! **11.axb4 Qxa1+ 12.Kd2 Qxh1 13.Qxc6+ bxc6 14.Ba6# 1-0**

Sociologist Dr. Morris Massey describes three major periods during which a child's values are developed.

### The Imprint Period

Up to the age of 7, we are like sponges, absorbing everything around us and accepting it as truth.

### The Modelling Period

Between the ages of 7 and 14, we begin to copy people, seeking role models both within and out of the family. These may be fictional characters, teachers, coaches or religion.

### The Socialization Period

Between 14 and 21, we are very largely influenced by our peers. As we develop as individuals and look for ways to get away from earlier programming, we naturally turn to people who seem more like us.

This shows the importance of the first 14 years of a child's life. In particular who they spend time with, what they read/watch and who they role-model.

Being involved with chess in these formative years is an excellent way of developing strong morals and values.

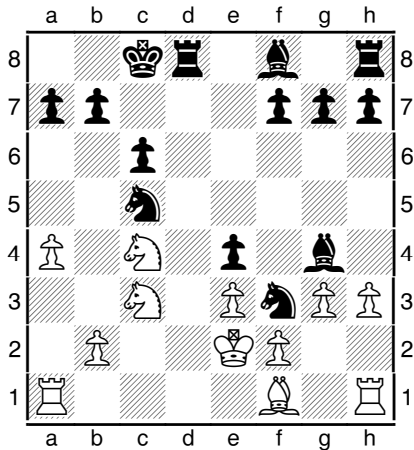
1. Chess has a 3000 year history of romance and chivalry. The sense of 'fairness' is very strong in chess.
2. Chess teaches a love of thinking, learning and of mental challenge.
3. Having a male role-model other than the father is sometimes hard to come by (most teachers are female). Most famous chess players or chess coaches are male.
4. There is no choice but to accept responsibility for one's own actions.

Having imprinted desirable values in the first years of a child's life will help them make better decisions in their challenging teenage and adult years.

# Need to Build your Mental Muscles™?

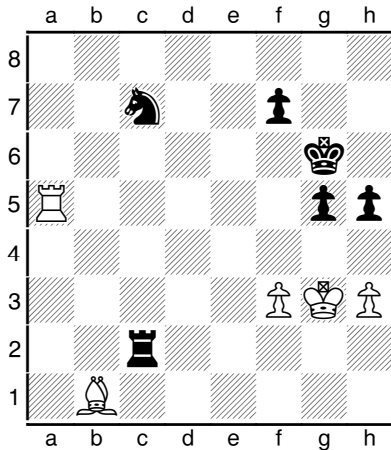
(Answers on Page 8)

1.



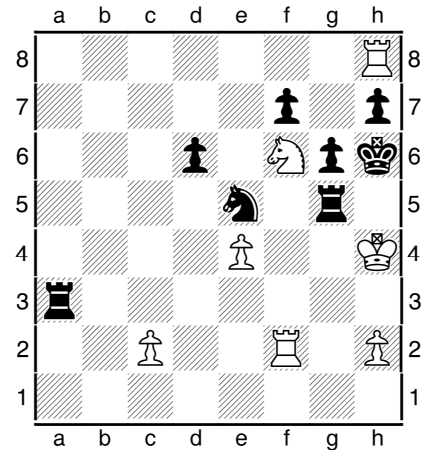
Black to play and mate in 3.

2.



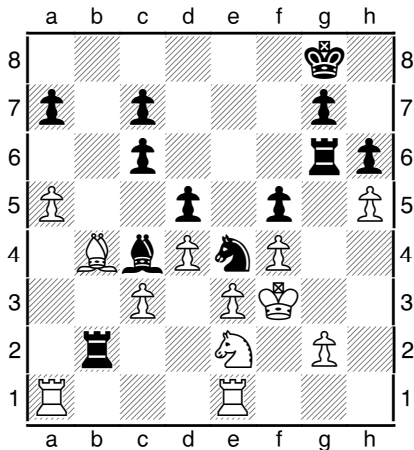
Black to play and mate in 3.

3.



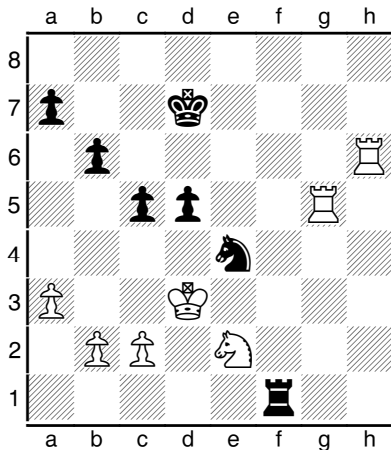
Black to play and mate in 2.

4.



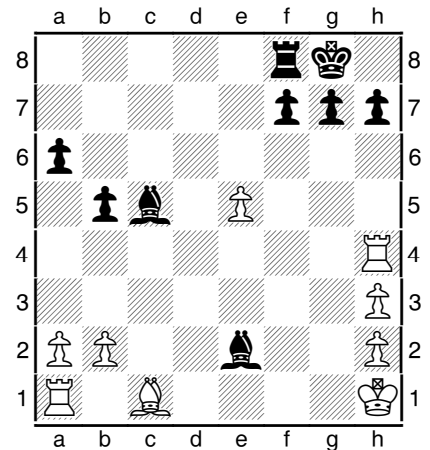
Black to play and mate in 2.

5.



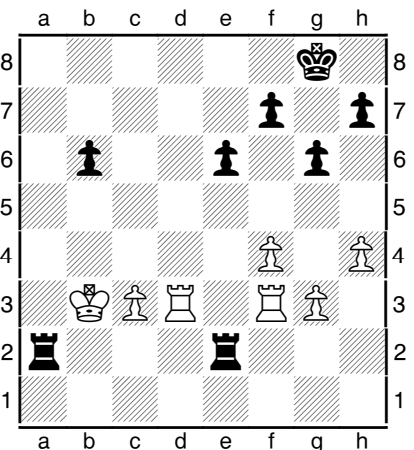
Black to play and mate in 1.

6.



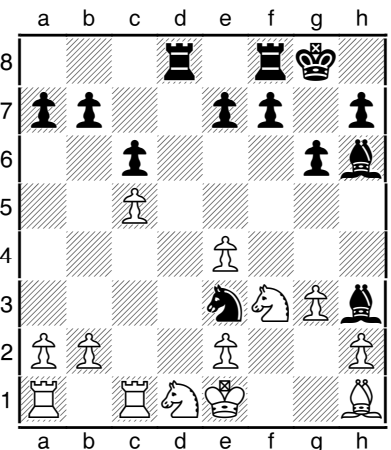
Black to play and mate in 1.

7.



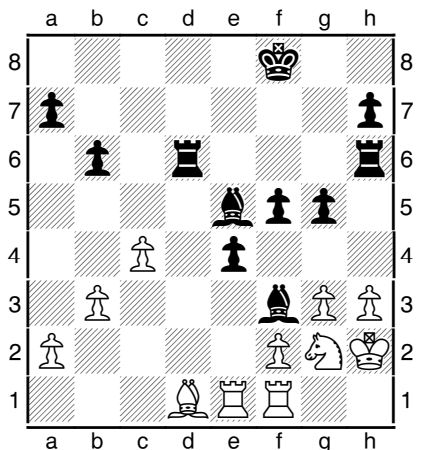
Black to play and mate in 2.

8.



Black to play and mate in 3.

9.



Black to play and mate in 4.

## CHESS CLOCKS

# Chess in Motion

By www.chessboss.com

Prior to the invention of the first mechanical chess clock, games of chess - even in tournament play - could drag on for what seemed to be an unending amount of time. Indeed, from time to time high profile players in tournaments were known to walk away from a competition claiming that their opponents were unfairly delaying play.

One of the biggest offenders was Louis "Leather-but"t Paulsen. In 1857 he played in the National Chess Congress to decide Americas best Chess player. The final was a match against Paul Morphy.

Morphy never took more than 10 minutes to make a move during the entire tournament, yet game 2 of the final took over 15 hours to play! Paulsen's strategy was psychological. It is impossible to play your best when you are tired and angry! In an era where gentlemanly behaviour was expected this strategy was doubly devilish - as long as Paulsen appeared to be studying the position nothing could even be said by Morphy as he would appear rude!

Earlier, in London in 1851, the first truly international tournament took place. During this tournament two incidents took place which flagged the need for clocks. In one match 10 hours elapsed

without a move. Eventually one player inquired of the other "Why don't you move Sir?"- the response- "Isn't it your move?" The second incident was recorded by the score for one of the matches "Both players now asleep". A player named Williams was involved in both incidents and was a practitioner of the "leather-but"t approach to Chess.

The first mechanical chess clock ever created was the invention of Thomas Bright Wilson in the United Kingdom. Wilson's chess clock was used the first time in tournament play in 1883. The mechanical chess clock was premiered in the 1883 London Tournament.

Prior to the introduction of the chess clock by Wilson, time was kept (in a very casual and many times non-binding manner) through the use of regular timepieces with a so-called recording secretary to keep track of the time. In the alternative, sand glasses were used to track time in chess play.

The basic design of the chess clock has not changed dramatically since its initial development. The first chess clock actually consisted of two smaller clocks - one of the clocks for the White Player and one of the smaller clocks for the Black Player. The clocks were

situated so that when one of the individual chess clock time pieces is running, the other is stopped. In fact, when a player finishes with his or her move, the player stops his or her own clock which automatically initiates the opponent's chess clock time piece.

The first mechanical chess clock required each of the two players to make forty moves apiece during a time period of 2.5 hours for each player. If the player failed to make the appropriate number of moves under the calibration of the chess clock, the game would be forfeited due to time.

Today's games are much faster - the World Championships being 40 moves in 2 hours, Australian Championships at 90 minutes per player to Interschool Events at 15 minutes per player.

Historically, and to the current day, the chess clock has made the game of chess - including tournament play - more enjoyable and, on some level, more appropriately challenging (you can give time-handicaps). With the advent of the chess clock, the days of unending, frustrating games of chess are long gone and truly things of the past.

Chess clocks of all varieties are available to purchase from [www.chessworld.com.au](http://www.chessworld.com.au).



## DGT Chess Clocks



DGT Projects (The Netherlands) have been the leading manufacturers of chess clocks for the past 15 years.

Their clocks are the only ones endorsed by FIDE (the World Chess Federation).

On the left (top) you see the DGT 2010 - the newest release! At RRP \$129 it is recommended for tournament players. These are used in all World Championships.

The lower image shows the DGT Easy (available in Red, Yellow, Blue and Green).

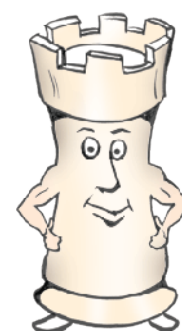
RRP \$55 this is recommended for school and casual players. Club players are recommended the DGT Easy+ (\$65).

DGT Easy are the preferred clock for the National Interschool Chess Championships.

**Tell us who, in 1883, invented Chess Clocks for 10% off all DGT Chess Products!**

## 2007 Tournament Calendar

<b>RJ Shield</b> <i>Novice Tournament</i>	<b>Holiday Programs</b> <i>All welcome !</i>	<b>Victorian Youth Championships</b>
Oct-21 1:00 - 5:00pm Wesley College Glen Waverley	Term 3 October 1, 2 & 13 Old Orchard & Seaford Primary	September 25 & 26 Wesley College High St Rd, Glen Waverley
Nov-11 1:00 - 5:00pm Wesley College Glen Waverley	Term 4 January 9, 10 & 11 To Be Advised	
Entry Fee: \$20 per event	Cost: \$49 per day Discounts for multi-day	Championships: \$120



**Chess**



Building Mental Muscles™  
since 1997

**Australian Junior Chess Championships**

*Sydney, January 13-25, 2008*

**Applications NOW OPEN**

Only 15 places available - [andrew@chesskids.com.au](mailto:andrew@chesskids.com.au)

### Improve your chess skills ... anytime!

Playing develops many critical **thinking skills**. Learning chess in a structured way really accesses the full potential benefit of problem solving skills, creativity, concentration, memory and decision making.

Plus, the more you learn about Chess the **more fun** you have (and the more games you win)!

Not everyone is in the enviable position of having regular access to a Professional Chess Coach. Perhaps the tyranny of distance, the cost or the incompatible schedules in our busy lives.

iChess is here to help! Learn through an interactive Video and Audio lesson anytime you like! Structured from the Chess Kids syllabus (tested by 85,360 students over the past 10 years), taken from live lessons and with stories, games and points of interest along the way.

**iChess.com.au**

**Register online for your FREE lessons!**

## Spring Specials

Ring 1300 4-CHESS

Fax your purchase order

**03 9576 8152**

We tailor packages to each individual schools' needs. Contact us for FREE ideas and resources, plus the most expert advice when it comes to chess!

- Coaching programs
- Mind Sports Programs
- Giant Chess
- Tournaments
- Sets and Boards
- Software
- Books
- Franchise opportunities

(All prices include GST)

<p><b>iChess - \$880</b></p> <ul style="list-style-type: none"> <li>• Full-day Incursion</li> <li>• One term school subscription to iChess</li> <li>• Upgrade to 4 terms +\$220</li> </ul> <p>Normally \$1039</p>	<p><b>The Dozen - \$360</b></p> <ul style="list-style-type: none"> <li>• 12 tournament sets</li> <li>• 12 tournament boards</li> <li>• FREE Delivery</li> <li>• Lost Piece Replacement</li> </ul> <p>Normally \$449</p>
<p><b>Chess Demonstraion</b></p> <p><b>\$480</b> (includes sets)</p> <ul style="list-style-type: none"> <li>• 60-80 students receive a lesson, strategies, history and Challenge the Master</li> <li>• <b>Plus</b> "The Dozen" Chess Sets as above.</li> </ul> <p>RRP \$779</p>	<p>6 Tournaments sets Just \$199</p> <p>Prices available until end of October or while stocks last!</p> <p>Order by faxing purchase order to 03 9576 8152.</p>
<p><b>Giant Chess (64cm)</b></p> <p><b>\$1049 + Bonus</b></p> <ul style="list-style-type: none"> <li>• Order in October and get a <b>FREE</b> chessboard (RRP \$175)</li> <li>• Plus delivery @ cost</li> </ul> <p>Normally \$1495</p>	<p><b>NEW!! Delux Garden Set</b></p> <p><b>\$249</b></p> <ul style="list-style-type: none"> <li>• 30cm High</li> <li>• Sturdy pieces &amp; board</li> <li>• FREE Delivery</li> </ul> <p>Normally \$295</p>

### Building Mental Muscles™ - Answers

1. 1...Nd4+ 2.Kd2 Ncb3+ 3.Ke1 Nc2++
2. 1...h4+ 2.Kg4 f5+ 3.Rxf5 Rg2++
3. 1...Rh5+ 2.Nxh5 g5++
4. 1...Bxe2+ 2.Rxe2 Rg3++
5. 1...Rf3++
6. 1...Bf3++
7. 1...Reb2+ 2.Kc4 Ra4++
8. 1...Rxd1+ 2.Rxd1 Nc2+ 3.Kf2 Be3++
9. 1...Rxb3+ 2.Kxh3 Rh6+ 3.Nh4 Rxb4+ 4.gxh4 g4++

(402)

### Answers

**Who am I?**

Vera Menchik-Stevenson (nee Menchik)

**What am I?**

The "Touch Move" rule

