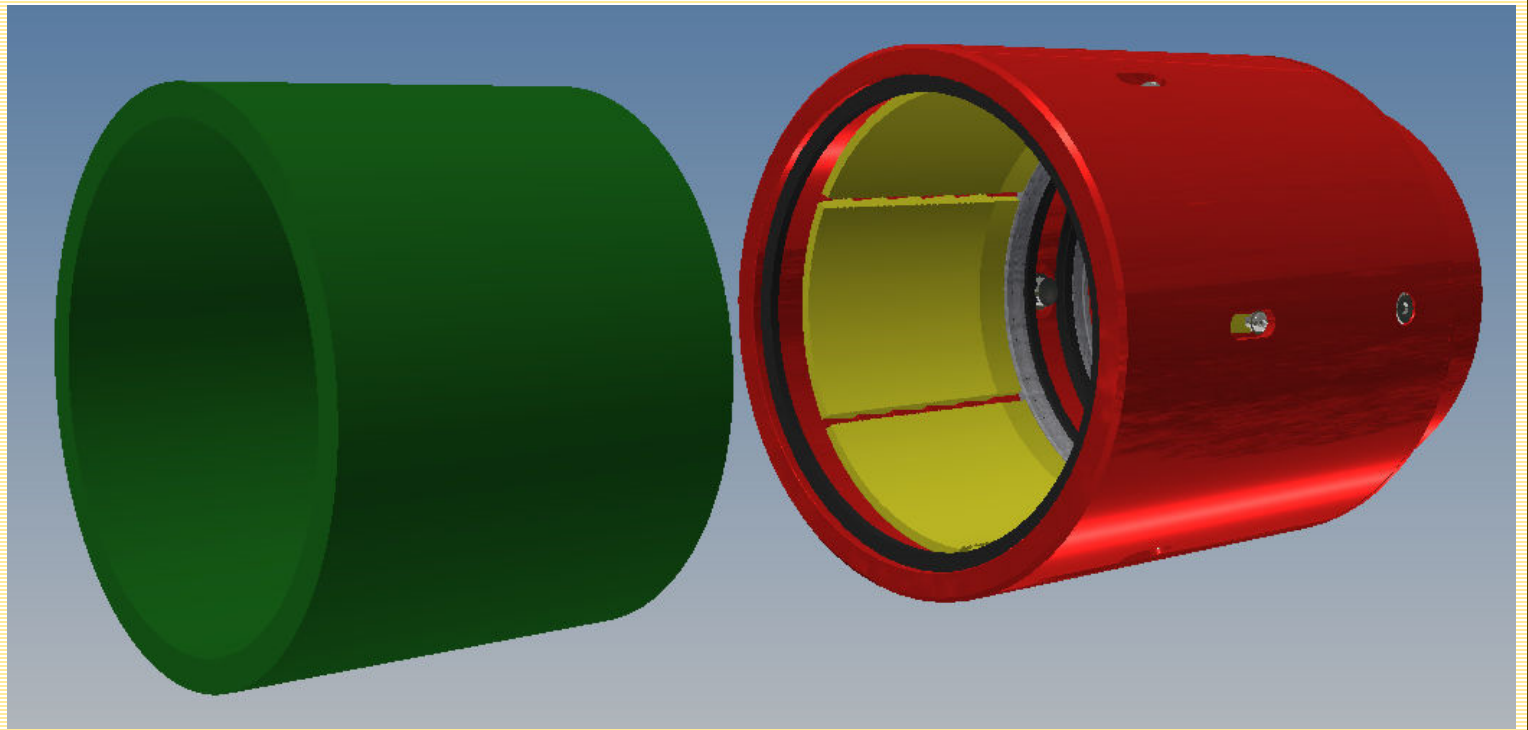


# BETA SUBSEA SYSTEMS

DIV. BAUGH CONSULTING ENGINEERS, INC.

## BETA-LOK PIPELINE CONNECTOR



**THE BETA-LOK PIPELINE CONNECTORS PROVIDE RAPID  
MAKE - UP OF PIPELINE JOINTS FOR OFFSHORE PIPELAY OPERATIONS  
THEY FEATURE FULLY PRELOADED RIGID CONNECTIONS WITH METAL  
TO METAL SEALING**

**FULL PIPE TENSILE AND PRESSURE RATING  
RIGID, FULLY PRELOADED CONNECTION  
CAN BE SET AND PRESSURE TESTED IN 2 MINUTES  
WILL SET AND SEAL ON COATINGS**

**ALLOWS FULLY COATED JOINT PREPARATION - NO COATING DAMAGE EXCEPT AT  
SLIP TEETH - AREA ENVIRONMENTALLY PROTECTED**

**ALL METAL TO METAL PRIMARY SEALING  
SELF-ENERGIZED METAL AND RESILIENT SEALING  
SEALS CAN BE RE-ENERGIZED**

Beta Subsea Systems offers a combination of patent licensing, engineering, sales, manufacturing capabilities, inventory, service and products to assist you grow your business.

Contact Information: Benton F. Baugh, Ph.D., P.E., 713-419-8683, [bbaugh@baughengrs.com](mailto:bbaugh@baughengrs.com)

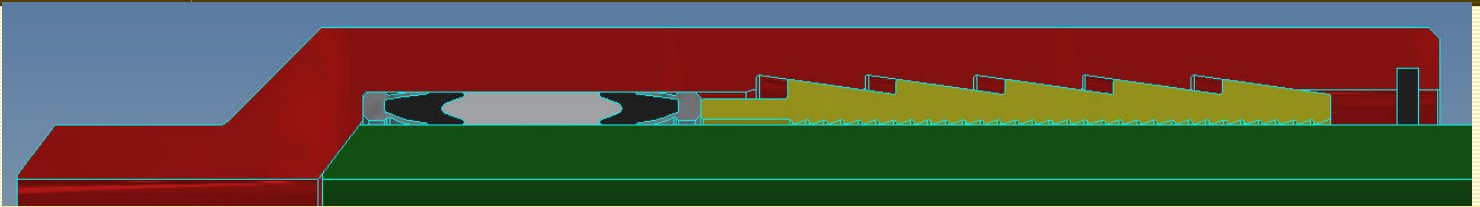
[www.betasubsea.com](http://www.betasubsea.com)

PATENT PENDING

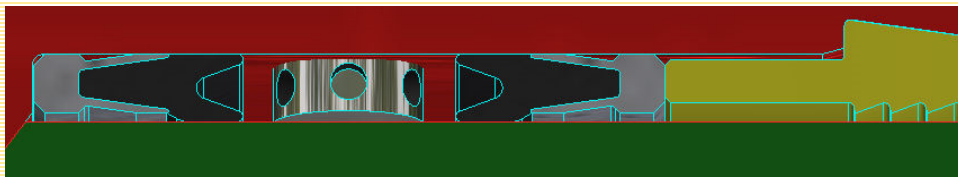
# BETA SUBSEA SYSTEMS

DIV. BAUGH CONSULTING ENGINEERS, INC.

## BETA-LOK PIPELINE CONNECTOR



**ALL LEAK PATHS HAVE ZERO GAP, METAL TO METAL, PRESSURE ENERGIZED SEALS**  
**METAL-TO-METAL SEALS ARE DEFORMED INTO CONTACT WITH THE PIPE**  
**RESILIENT SETTING SEALS BECOME BACKUP SEALS**  
**ACTUATING MEDIA BECOMES A BACKUP SEAL**



**ON INITIAL INSERTION,  
PIPELINE END IS SEALED  
WITH ZERO GAP PRESSURE  
ENERGIZED RESILIENT CUP  
SEALS**



**SEALS ARE ENERGIZED AND  
SLIPS ARE SET WITH SEAL-  
WELD 5050 VALVE SEALANT,  
WHICH HAS BEEN TESTED  
TO SEAL ON A 0.030" GAP**



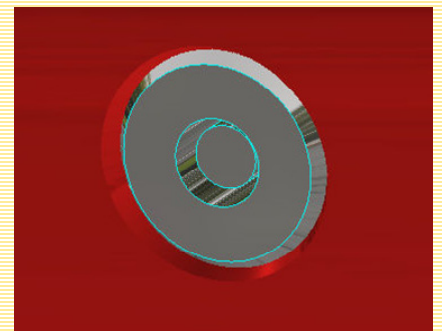
**SEALANT / ENERGIZER  
INJECTION PORT**

**ALL METAL SEALING**



**METAL BELLOWS  
PRESSURE GAUGE  
OPTION**

**ALL METAL SEALING**



**EXTERNAL PRESSURE  
SENSOR, FULLY  
PRESSURED WHEN  
CENTER IS FLUSH TO  
OUTSIDE**

Beta Subsea Systems offers a combination of patent licensing, engineering, sales, manufacturing capabilities, inventory, service and products to assist you grow your business.

Contact Information: Benton F. Baugh, Ph.D., P.E., 713-419-8683, [bbaugh@baughengrs.com](mailto:bbaugh@baughengrs.com)

[www.betasubsea.com](http://www.betasubsea.com)

PATENT PENDING