

PIMA COUNTY PARK

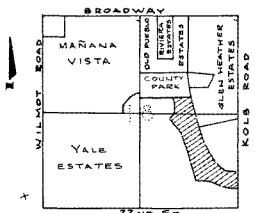
500 - S.

MIRAMONTE TERRACE
BK 12 P 40
MAY 22, 1957

•• 1/2" Steel Pins Set
Bearings are related
to Glenn Heather Estates.

500 - S.

GLEN HEATHER ESTATES
BK 12 P 33
APRIL 3, 1957



LOCATION PLAN
SECTION 18, T.14 S., R.15 E.
PIMA COUNTY, ARIZ.

600 - S.

600 - S.

DEDICATION

The undersigned owners of the land shown on this plot do hereby consent to the subdivision of said land in the manner shown hereon and hereby dedicate to the use of the public all streets, thoroughfares, easements, alleys so designated on this plot with an additional 5' aerial or overhead easement on each side of said alleys for wires and cross-arms etc. on power and pole lines.

ARIZONA LAND TITLE & TRUST COMPANY
an Arizona corporation, as Trustee, under that certain Trust Agreement No. 5135-T
By John B. Wilkie
John B. Wilkie, Vice President

700 - S.

700 - S.

STATE OF ARIZONA S.S.
COUNTY OF PIMA

This instrument was acknowledged before me this 20 day of June, 1957 by John B. Wilkie as Vice President of the Arizona Land Title & Trust Company, as Trustee

Gene L. Anderson
NOTARY PUBLIC

My commission expires 3-12-60

800 - S.

800 - S.

APPROVALS

I, ELSA B. HANNA, hereby certify that this plat was approved by the Board of Supervisors on the 26 day of Feb, 1957

Elsa B. Hanna 2-9-59
CLERK, BOARD OF SUPERVISORS DATE

Walter A. Burg 2-8-59
COUNTY ENGINEER DATE

I, MARY FIELDS, Clerk of the City of Tucson, State of Arizona, hereby certify that this plat was approved by the Mayor and Council of the City of Tucson, State of Arizona, on this 2 day of FEB., 1957

Mary Fields 2-5-59
CLERK, CITY OF TUCSON DATE

Paul Stipes 2/15/59
CITY ENGINEER DATE

Ben Stein 2-9-59
CHAIRMAN, CITY P. & Z. COMM. DATE

**CITY OF TUCSON
MAP 29
ZONE R-1,R-3**

John M. Carr
EXEC. SEC. CITY P. & Z. COMM.
ORIGINAL APPROVING APPROVED
John M. Carr

**ANNOTATED
COPY**

MIRAMONTE TERRACE
Lots 10-31 BLOCK 16, Lots 17-22 BLOCK 12
BLOCKS 17-19

Being a subdivision of a portion of the E 1/2 SECTION 18, T.14 S., R.15 E., G. & S.R.B. & M. PIMA COUNTY, ARIZONA

SCALE: 1"=100' NOVEMBER 1958
GENE ANDERSON
CIVIL ENGINEER

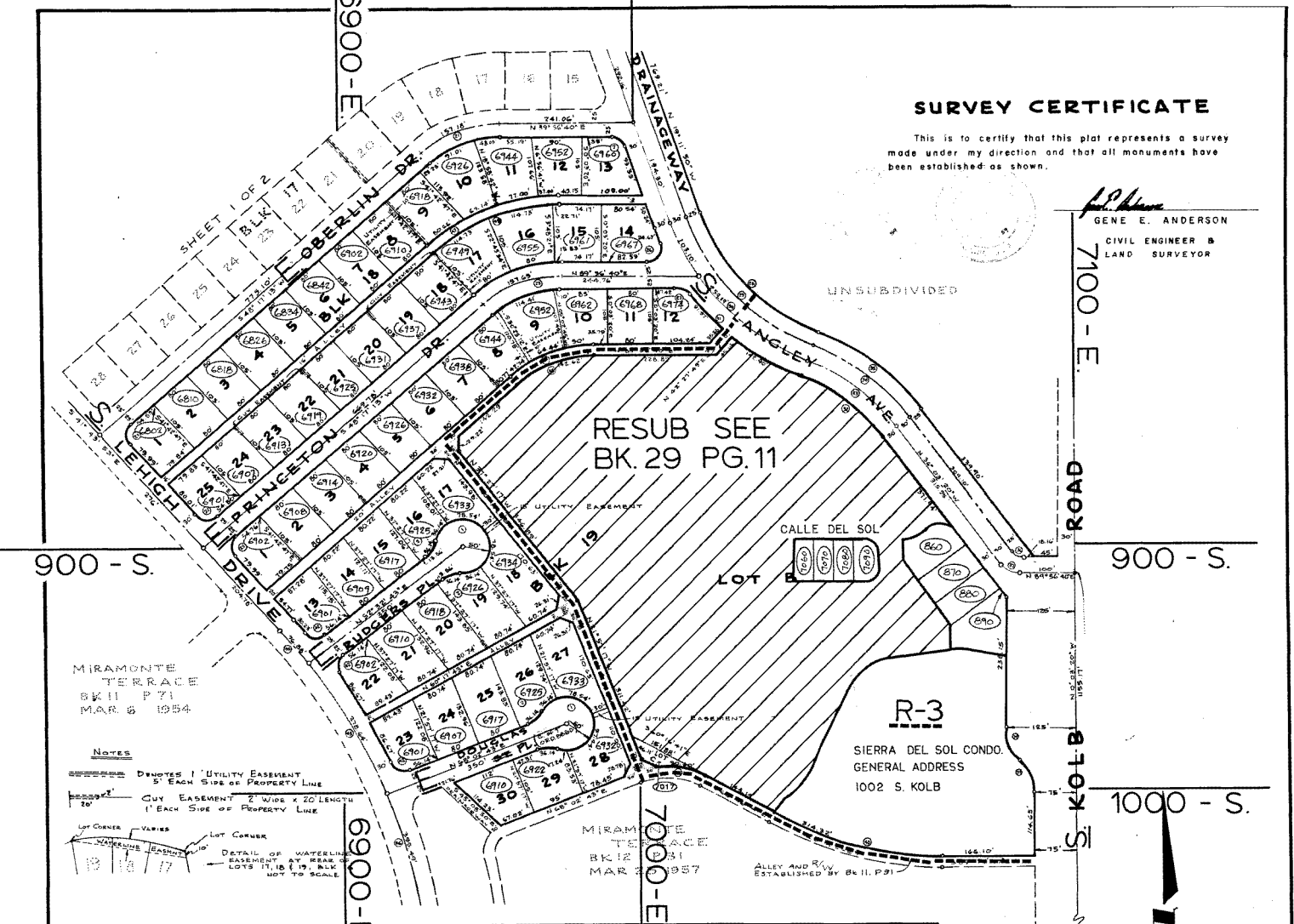
C12-58-24

SHEET 1 OF 2 SHEETS

SURVEY CERTIFICATE

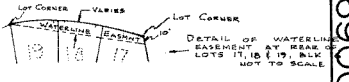
This is to certify that this plat represents a survey made under my direction and that all monuments have been established as shown.

J.P. Anderson
 GENE E. ANDERSON
 CIVIL ENGINEER &
 LAND SURVEYOR



MIRAMONTE
 TERRACE
 BK 12 P 31
 MAR 6 1954

NOTES
 ===== D INDOTES 1" UTILITY EASEMENT
 5' EACH SIDE OF PROPERTY LINE
 --- EASEMENT 2" WIDE X 20' LENGTH
 1" EACH SIDE OF PROPERTY LINE



CURVE DATA

NO.	A	R	T	Lc	NO.	A	R	T	Lc	NO.	A	R	T	Lc
1	262°49'08"	50.00'	229.36'	17	41°39'27"	622.19'	236.70'	452.37'	33	32°00'00"	363.49'	104.23'	203.01'	
2	41°24'34"	50.00'	18.90'	18	41°39'27"	492.19'	167.85'	387.85'	34	32°00'00"	393.49'	112.83'	219.77'	
3	31°24'16"	150.00'	42.29'	19	41°39'27"	362.19'	137.79'	253.51'	35	32°00'00"	418.49'	120.00'	233.73'	
4	88°35'21"	25.00'	23.64'	20	41°39'27"	346.19'	131.70'	251.70'	36	54°00'00"	25.00'	12.74'	23.56'	
5	41°39'27"	777.24'	565.14'	21	41°39'27"	216.18'	82.25'	157.18'	37	54°00'00"	41.58'	21.19'	39.19'	
6	100°36'00"	25.00'	30.11'	22	89°58'54"	25.00'	24.86'	35.26'	38					
7	70°51'30"	25.00'	17.78'	23	90°01'06"	25.00'	25.01'	39.28'	39	45°00'00"	65.34'	35.55'	67.03'	
8	12°26'13"	733.31'	113.44'	24	109°08'30"	25.00'	35.14'	47.62'	40	29°40'36"	606.83'	160.77'	314.32'	
9	24°23'30"	703.31'	152.01'	25	41°39'27"	216.83'	82.44'	187.65'	41	37°43'33"	137.59'	47.01'	90.60'	
10	24°23'30"	673.31'	145.56'	26	112°14'57"	25.00'	37.24'	48.98'	42	87°21'31"	25.00'	23.87'	38.12'	
11	24°23'30"	648.31'	140.76'	27	64°03'12"	25.00'	12.75'	23.58'	43	15°30'00"	1030.00'	140.18'	276.64'	
12	10°16'36"	694.15'	62.62'	28	48°51'30"	369.85'	168.00'	315.39'	44	04°16'36"	1030.00'	36.46'	76.88'	
13	10°05'35"	724.15'	63.95'	29	48°51'30"	394.85'	179.55'	336.70'	45	41°39'27"	196.19'	74.64'	142.82'	
14	9°33'30"	754.15'	65.21'	30	48°51'30"	424.85'	182.99'	362.24'	46	22°00'00"	1030.00'	200.21'	395.49'	
15	9°44'20"	779.15'	66.38'	31	48°51'30"	454.85'	206.81'	387.87'	47	41°39'27"	362.83'	138.03'	243.80'	
16	41°39'27"	842.19'	244.31'	32	32°00'00"	333.49'	95.65'	186.26'	48	41°39'27"	346.83'	131.95'	252.17'	

MIRAMONTE TERRACE

Lots 10-31 BLOCK 16, Lots 17-22 BLOCK 12
 BLOCKS 17-19

Being a subdivision of a portion of the E 1/4 SECTION 18 T. 14 S. R. 15 E. G. & S. R. B. 8 M. PIMA COUNTY, ARIZONA

ORIGINAL ADDRESSING APPROVED
J.P. Anderson

SCALE 1" = 100'
 GENE ANDERSON
 CIVIL ENGINEER
 NOVEMBER 1958
 SHEET 2 OF 2 SHEETS