

The image features a complex steel truss structure of a building under construction, set against a clear blue sky. A large blue triangle is positioned in the upper-left corner, partially overlapping the steel frame. The word "Rhodes" is written in a white, sans-serif font within this blue area. Below it, the tagline "better buildings" is written in a smaller, white, sans-serif font. At the bottom of the image, the slogan "SMARTER, FASTER AND BETTER WAY TO BUILD" is displayed in a large, bold, white, sans-serif font, centered horizontally.

Rhodes

better buildings

**SMARTER, FASTER
AND BETTER WAY
TO BUILD**



AN EFFICIENT QUALITY DRIVEN ALTERNATIVE

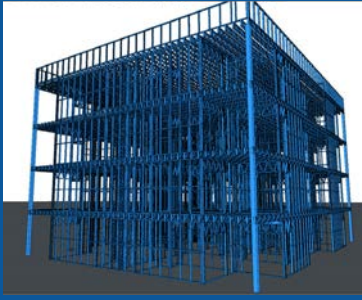
WHY STEEL?

- Straight and true
- Light weight
- Non-combustible
- 100% termite proof
- Environmentally sustainable
- Energy efficient
- Design flexibility
- Quick to build
- 50 year warranty

WHY RHODES?

- Over 10 years experience specialising in prefabricated building design and delivery Using modern technologies
- 'Modern Methods of Construction' (MMC) focus
- Highly conscious of sustainability principles, minimising waste, maximising energy efficiency
- Specialists in architecturally and structurally designed steel framed buildings
- Delivering concept to completion services
- Accurate design using BIM software and techniques
- Efficient and exact production, controlled production quality
- Full engineering certification and compliance focus
- Delivery planning and sequencing as per building and site progress
- Install, supervision and coordination capabilities
- Assembly guidelines and technical support provided
- Understanding every stage of the building process through vertical integration and experience
- Multiple in-house facilities, support, volume and backup
- Other building component procurement capability via experienced in-house operations

PRECISION DESIGN



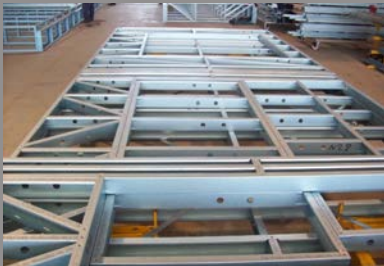
With the final design applied through digital software, your building is transformed from concept into reality. Framing is structurally engineered to comply with national building codes. During design, any errors or adjustments are quick and easy to address, eliminating the need to revisit the design post manufacturing. This design-supply focused, modern method of construction stays on top of global trends and changes to the environment we live in. As a result, we deliver flexible, sustainable, tailored homes and buildings

MANUFACTURING

Once the electronic designs are fed to our manufacturing plant, automated rollers begin unravelling structural steel coils and forming them at ambient temperatures into solid roof trusses, wall panels, floor joists, and many other framework assembly pieces. What was traditionally the most time consuming stage of the building process can now be completed at high speed with consistent quality and precision.



FACTORY ASSEMBLY



To assist with on-site construction progress, the light gauge steel (LGS) components are assembled in our factory, and are packaged for delivery. Being light and quick to load as well as unload, LGS framing can be transported with a reduced number of vehicles, containers and cranes, making delivery suitable and affordable for even the most remote of locations.

DELIVERY INSTALLATION

We offer delivery, installation and project management support services for our prefabricated & modular frames. Tangible savings through quicker, easier and precise installation on site result in more efficient delivery of projects. This helps to enhance project budgets, profitability and overall performance.



CONTACT US:

Head office:

Address:
1/6 Westbrook St.
Kew East
Victoria 3101

Phone :
+61 3 8862 2000



OUR EXPERIENCE COUPLED WITH OUR
VERTICAL INTEGRATION ENABLES US TO
DELIVER BETTER!

