

QST-553-BCS

—boiling, chilled and sparkling solutions

quatreau®
SmartTap



BOILING



CHILLED



SPARKLING



Model shown above QST-553-BCS



quatreau®
Collection

QST-553-BCS

—boiling, chilled and sparkling solutions

SPECIAL FEATURES

- Delivers high volumes of boiling, sparkling and chilled water
- Fits into a standard 24" cabinet
- Ventilation duct included for kick space installation
- Low energy consumption
- Highest performing insulation
- Most robust and reliable system available
- Dispenses 8 gallons piping hot (204-206°F) water per hour
- Up to 15 mugs in one draw with no temperature drop & just 5-8 minutes recovery time
- Delivers 5.3 gallons of chilled/sparkling water per hour at 40-45°F
- 25 gallons of champagne-style sparkling water per CO² cylinder
- Easy to use push button control with built-in safety feature
- DDA compliant controls
- 316 SS construction for optimum corrosion resistance
- Leak detection as standard
- Manufactured in UK



QST-553-BCS

—boiling, chilled and sparkling solutions

Model shown QST-553-BCS



PRODUCT DISPENSE



BOILING



CHILLED



SPARKLING

EQUIPMENT DIMENSIONS

- System is installed in component form
- Fits in standard cabinet (24"x 24"x 34.5")
- Individual component dimensions on drawing page

SITE PREPARATION DETAILS

- 1/4" isolated shut off valve on water supply line
- Two (2) dedicated 15amp 115V-60Hz circuits
- Maximum water pressure 60 psi
- Minimum water pressure 45 psi
- Minimum water flow 26.5 gallons per hour
- Approved sanitary drain to be installed to local codes to accommodate air gap supplied with equipment
- Ventilation cut in kick space per drawings
- Work-surface cut per drawings to house tap

LOCATION OF SERVICES

- Mains cold water: Ideally rise in back of cabinet and run along right hand wall 20" high and terminating with isolation valve 10" from front
- Power to be located high in cabinet. Recommended on left side of cabinet 20" up from base and 10" from front
- See drawings for further information

Model shown QST-553-BCS

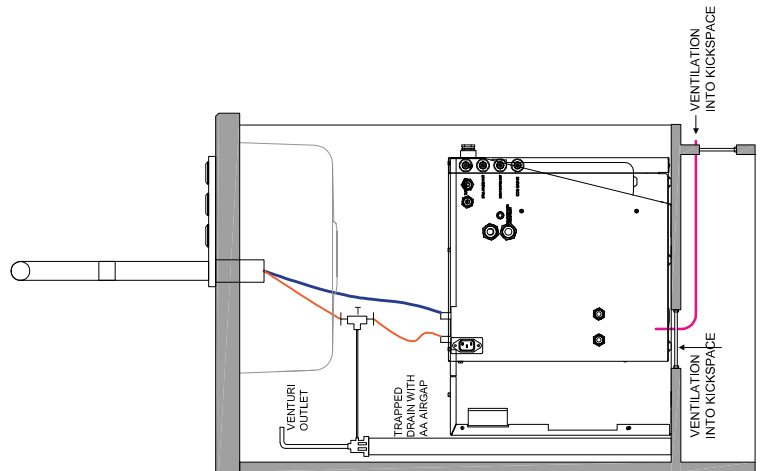
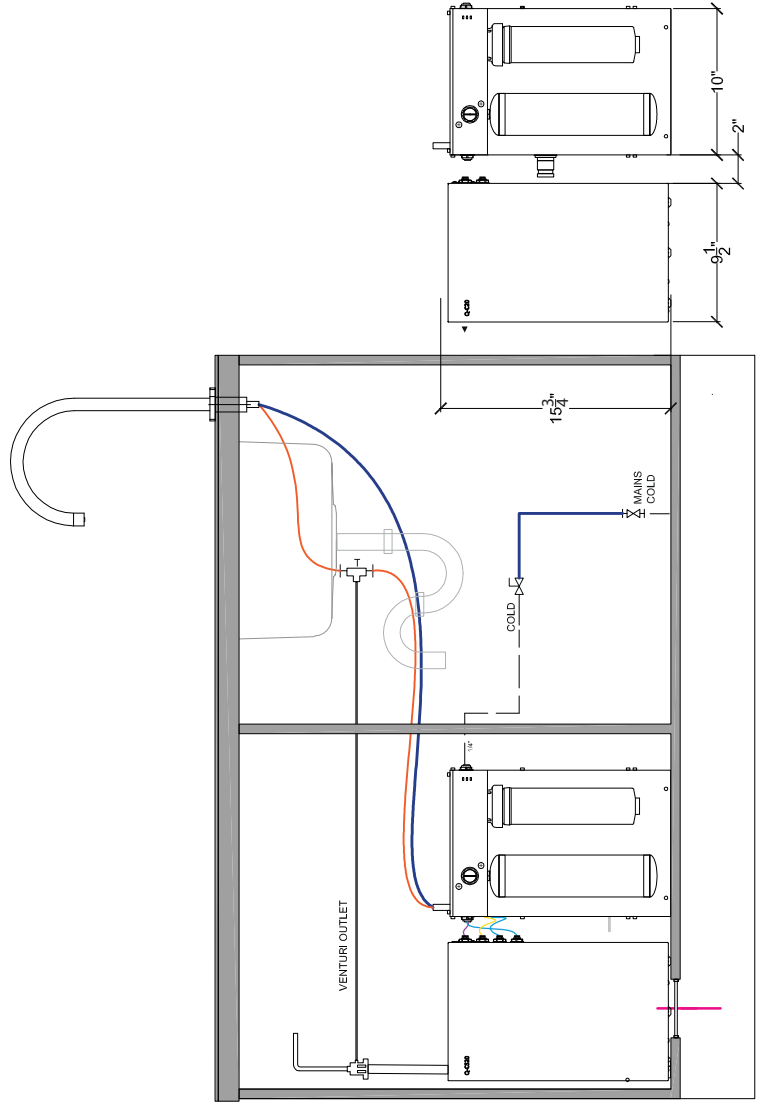
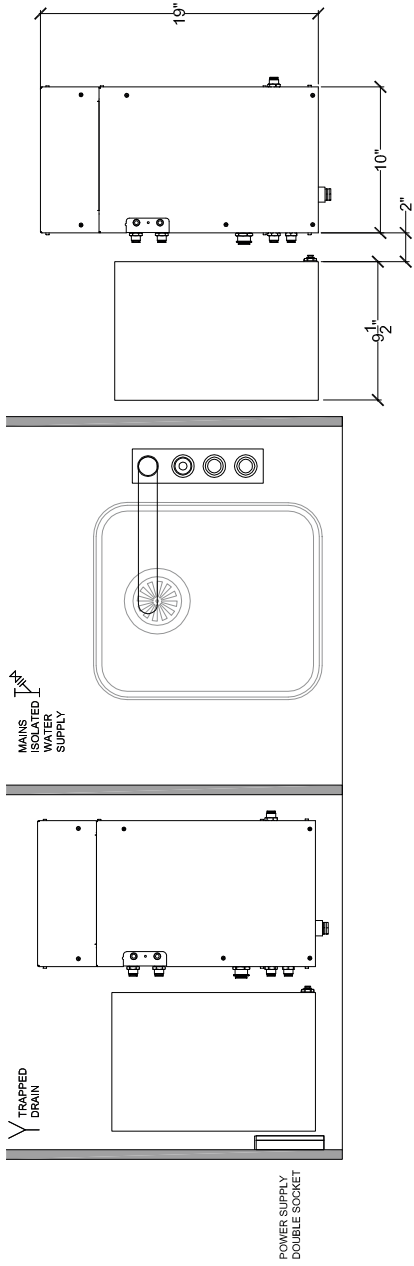


QST-553-BCS

—boiling, chilled and sparkling solutions



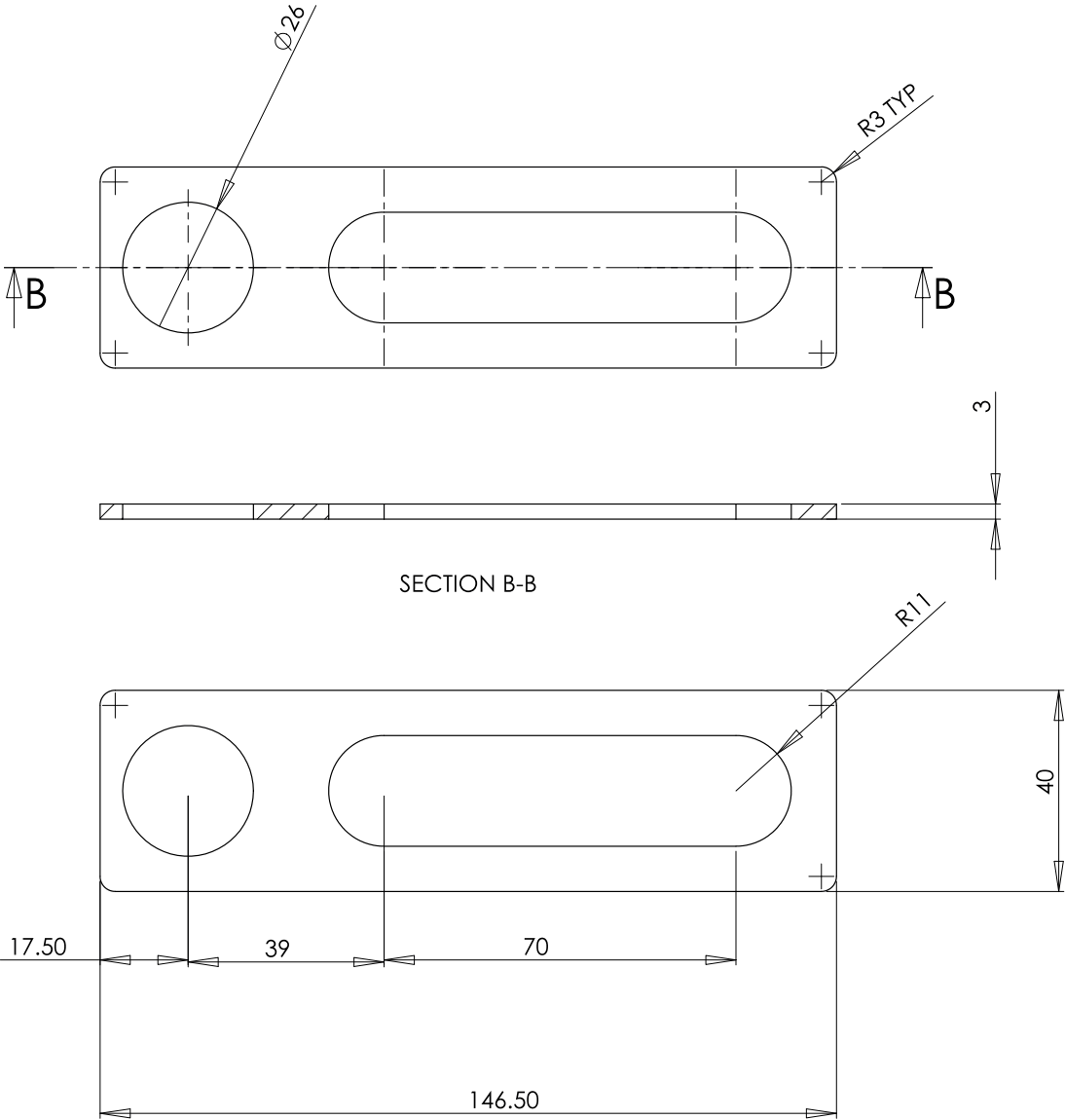
TYPICAL INSTALL DIAGRAM



QST-553-BCS

—boiling, chilled and sparkling solutions

CUTTING TEMPLATE



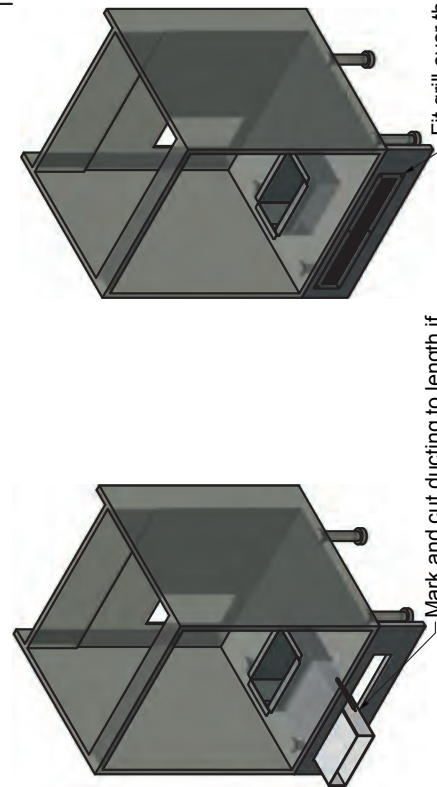
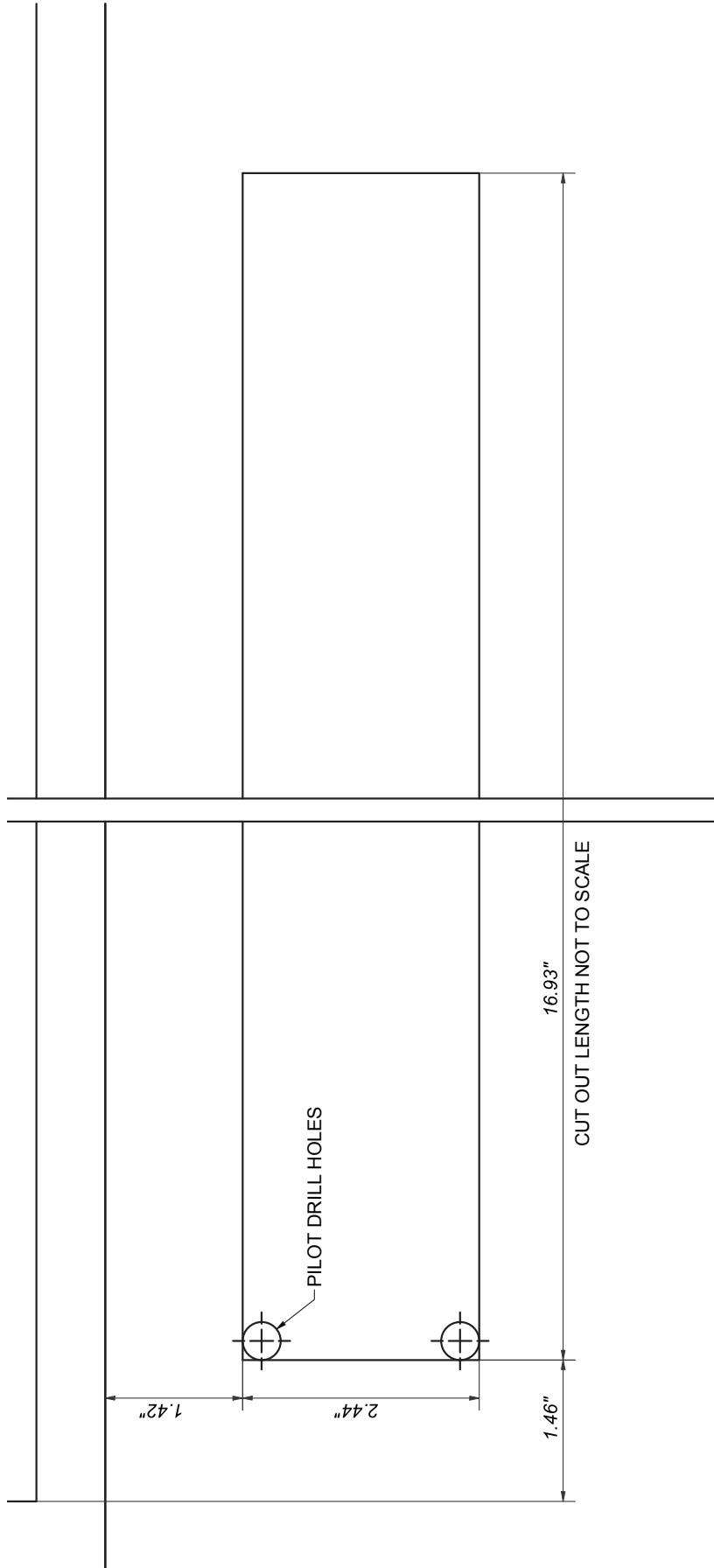
NOTES:
Unless otherwise specified, dimensions are in millimeters.

QST-553-BCS

—boiling, chilled and sparkling solutions



VENTILATION DRAWINGS - Kick Board Cutting Template - sample only



Mark and cut ducting to length if required using the kick board as reference.

Fit grill over the kick board cut out using the screws supplied.

IMPORTANT: Before making any cuts into the cupboard or kick board, ensure the area to be cut is free from water pipes or electrical cables. There is a risk of serious injury or death if electrical cables are cut, and significant damage to property if a water pipe is cut.

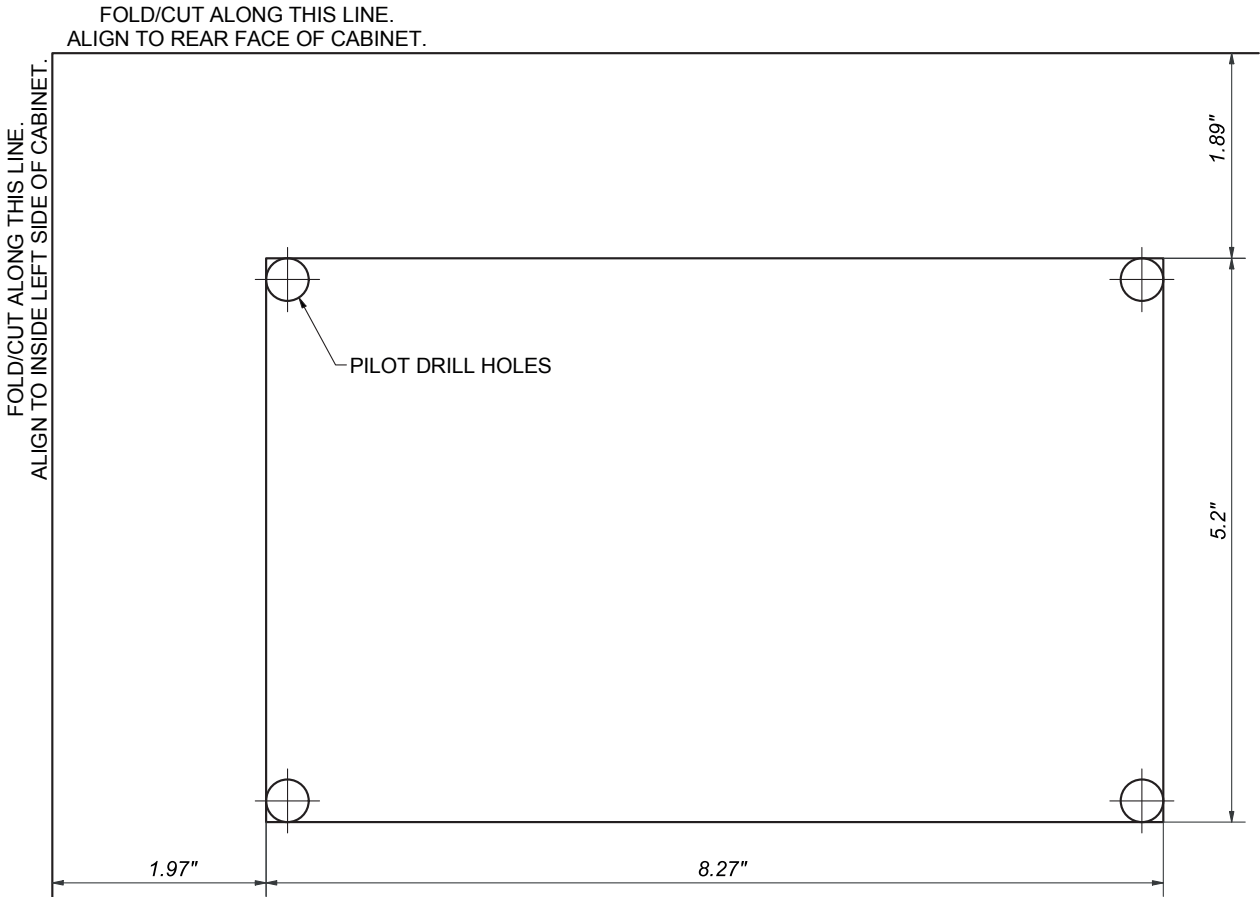
Use for: Q-C20, Q-CS20

3B7698-01 KICK-BOARD CUTTING TEMPLATE.

QST-553-BCS

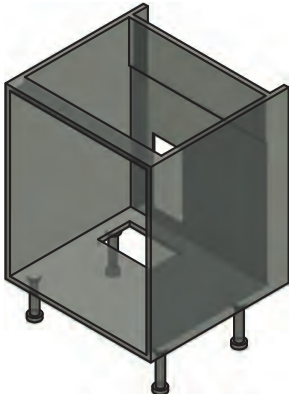
—boiling, chilled and sparkling solutions

VENTILATION DRAWINGS - Base Cutting Template - sample only



IMPORTANT: Before making any cuts into the cupboard or kick board, ensure the area to be cut is free from water pipes or electrical cables. There is a risk of serious injury or death if electrical cables are cut, and significant damage to property if a water pipe is cut.

Use for: Q-C20, Q-CS20



QST-553-BCS

—boiling, chilled and sparkling solutions

EXISTING INSTALLATIONS

We have clients enjoying our Quatreau Touch and SmartTaps (dispensing a variety of water types) in all of these buildings as well as in other commercial offices and prestigious homes across the globe.



WORLD TRADE CENTRE - New York

One World Trade Center is the main building of the rebuilt World Trade Center complex in Lower Manhattan, New York City. One WTC is the tallest building in the United States, the tallest building in the Western Hemisphere, and the sixth-tallest in the world.



THE SHARD London

The Shard, also infrequently referred to as the Shard of Glass, Shard London Bridge and formerly London Bridge Tower, is a 95-story supertall skyscraper, designed by the Italian architect Renzo Piano, in Southwark, London, that forms part of the Shard Quarter development.



THE SCALPEL London

The Scalpel is a commercial skyscraper in London, United Kingdom. It is located on Lime Street in the City of London financial area.



SALESFORCE TOWER - London

110 Bishopsgate (formerly Heron Tower now known as Salesforce Tower) is a commercial skyscraper in London. It stands 230 metres (755 ft) tall including its 28-metre (92 ft) mast making it the tallest building in the City of London financial district.

QSTD-553-BCS

—boiling, chilled and sparkling solutions

quatreau®
SmartTap



Model shown above QSTD-553-BCS

MADE
IN GREAT
BRITAIN

riba
product
selector

n55Plus

QSTD-553-BCS

—boiling, chilled and sparkling solutions



SPECIAL FEATURES

- Delivers high volumes of boiling, sparkling and chilled water
- Fits into a standard 24" cabinet
- Ventilation duct included for kick space installation
- Low energy consumption
- Highest performing insulation
- Most robust and reliable system available
- Dispenses 8 gallons piping hot (204-206°F) water per hour
- Up to 15 mugs in one draw with no temperature drop & just 5-8 minutes recovery time
- Delivers 5.3 gallons of chilled/sparkling water per hour at 40-45°F
- 25 gallons of champagne-style sparkling water per CO² cylinder
- Easy to use push button control with built-in safety feature
- DDA compliant controls
- 316 SS construction for optimum corrosion resistance
- Leak detection as standard
- Manufactured in UK



QSTD-553-BCS

—boiling, chilled and sparkling solutions



Model shown QSTD-553-BCS



Model shown QSTD-553-BCS



PRODUCT DISPENSE



BOILING



CHILLED



SPARKLING

EQUIPMENT DIMENSIONS

- System is installed in component form
- Fits in standard cabinet (24"x 24"x 34.5")
- Individual component dimensions on drawing page

SITE PREPARATION DETAILS

- 1/4" isolated shut off valve on water supply line
- Two (2) dedicated 15amp 115V-60Hz circuits
- Maximum water pressure 60 psi
- Minimum water pressure 45 psi
- Minimum water flow 26.5 gallons per hour
- Approved sanitary drain to be installed to local codes to accommodate air gap supplied with equipment
- Ventilation cut in kick space per drawings
- Work-surface cut per drawings to house tap

LOCATION OF SERVICES

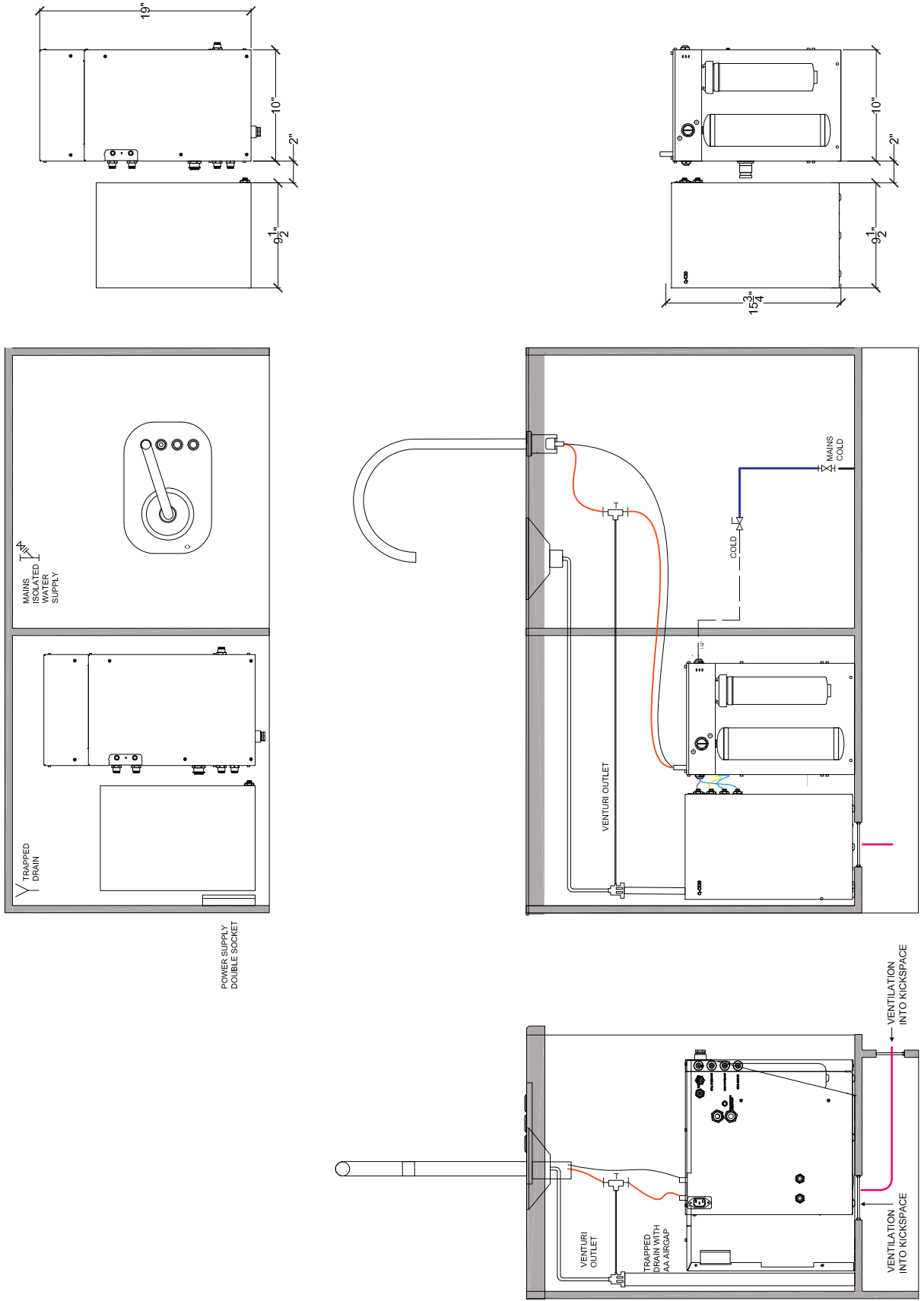
- Mains cold water: Ideally rise in back of cabinet and run along right hand wall 20" high and terminating with isolation valve 10" from front
- Power to be located high in cabinet. Recommended on left side of cabinet 20" up from base and 10" from front
- See drawings for further information

QSTD-553-BCS

—boiling, chilled and sparkling solutions



TYPICAL INSTALL DIAGRAM

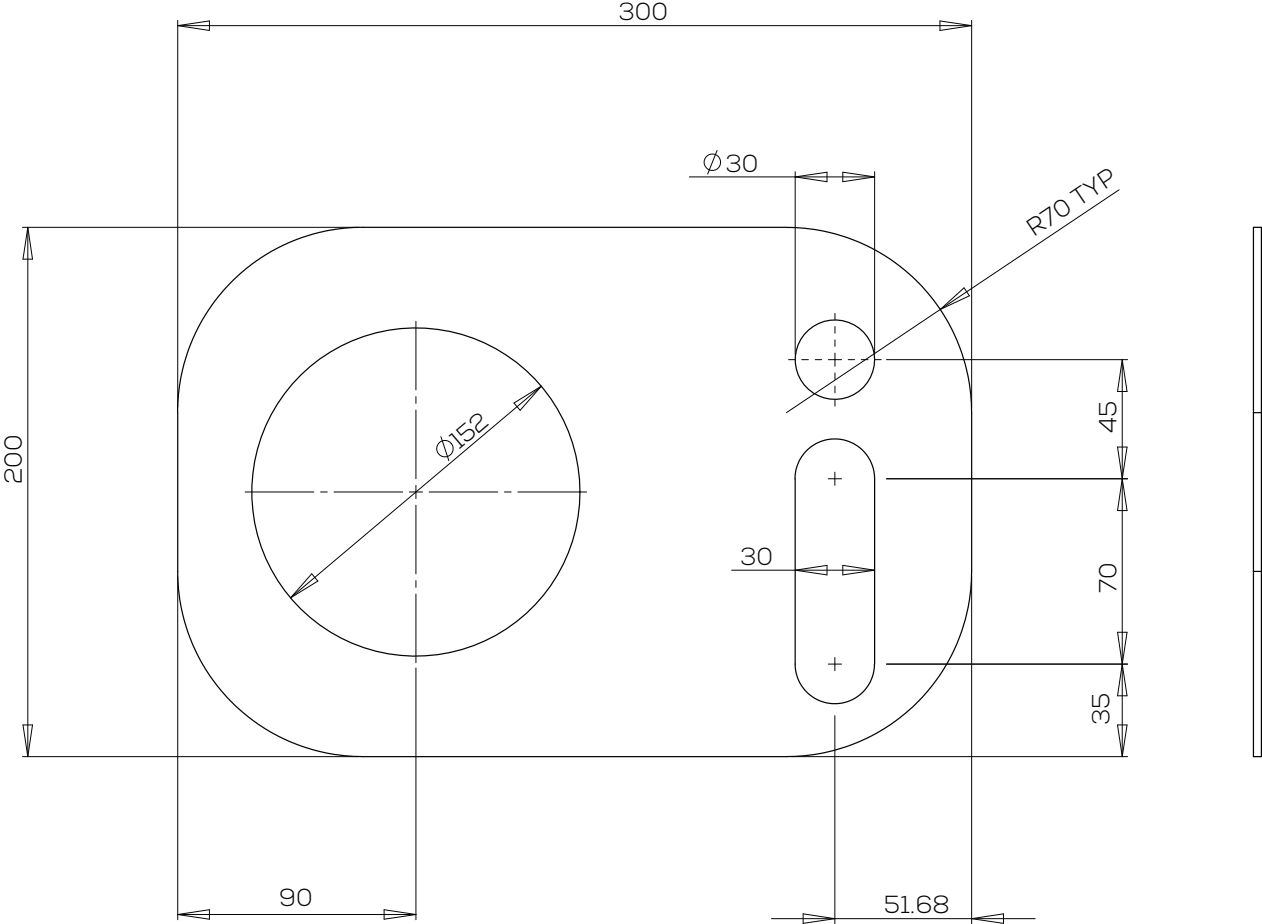


QSTD-553-BCS

—boiling, chilled and sparkling solutions



CUTTING TEMPLATE



NOTES:

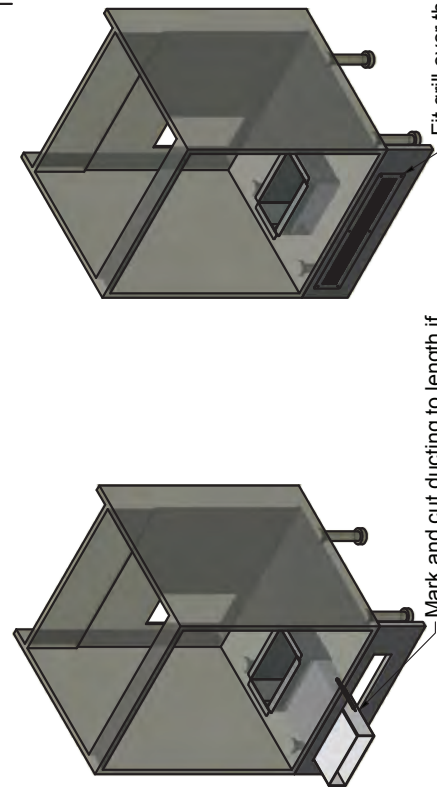
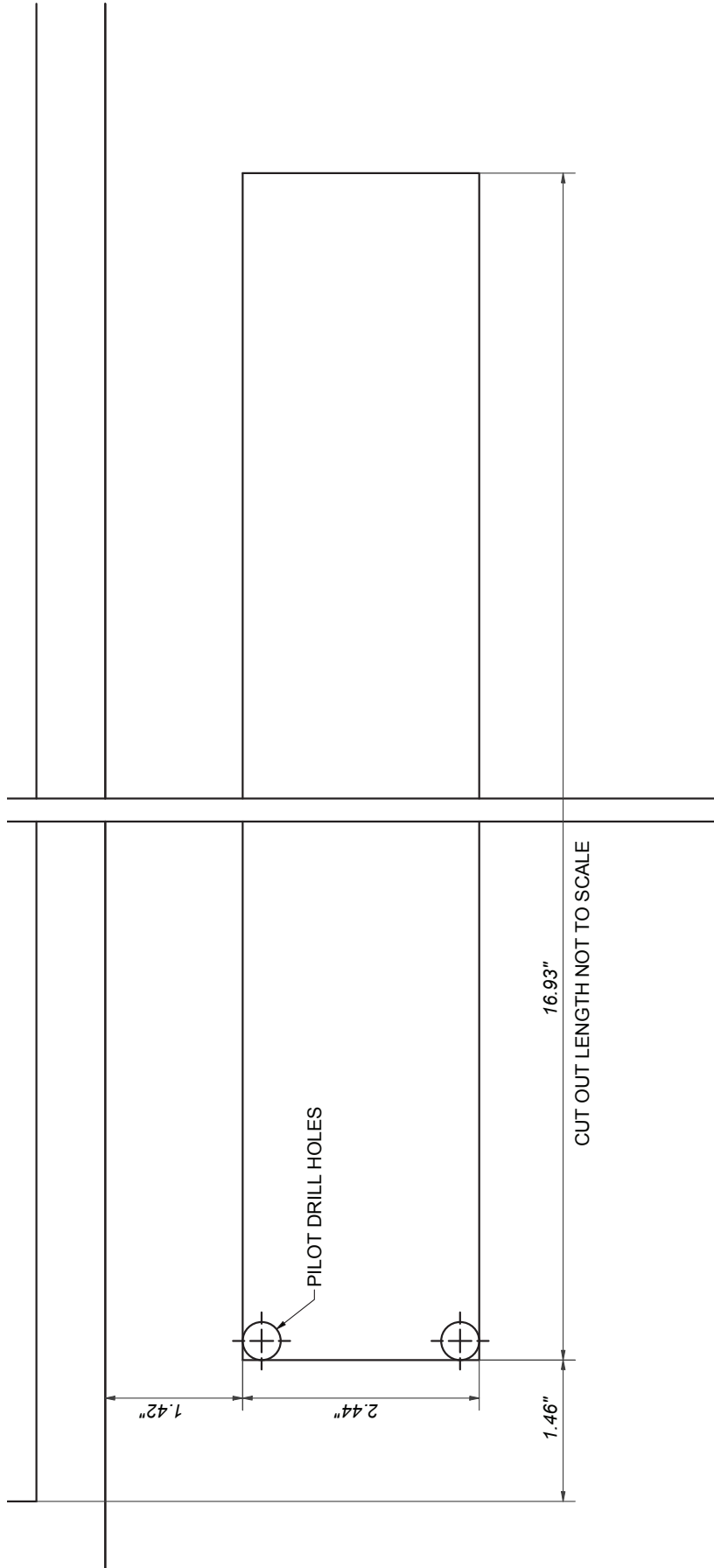
Unless otherwise specified, dimensions are in mm.

QSTD-553-BCS

—boiling, chilled and sparkling solutions



VENTILATION DRAWINGS - Kick Board Cutting Template - sample only



Mark and cut ducting to length if required using the kick board as reference.

Fit grill over the kick board cut out using the screws supplied.

IMPORTANT: Before making any cuts into the cupboard or kick board, ensure the area to be cut is free from water pipes or electrical cables. There is a risk of serious injury or death if electrical cables are cut, and significant damage to property if a water pipe is cut.

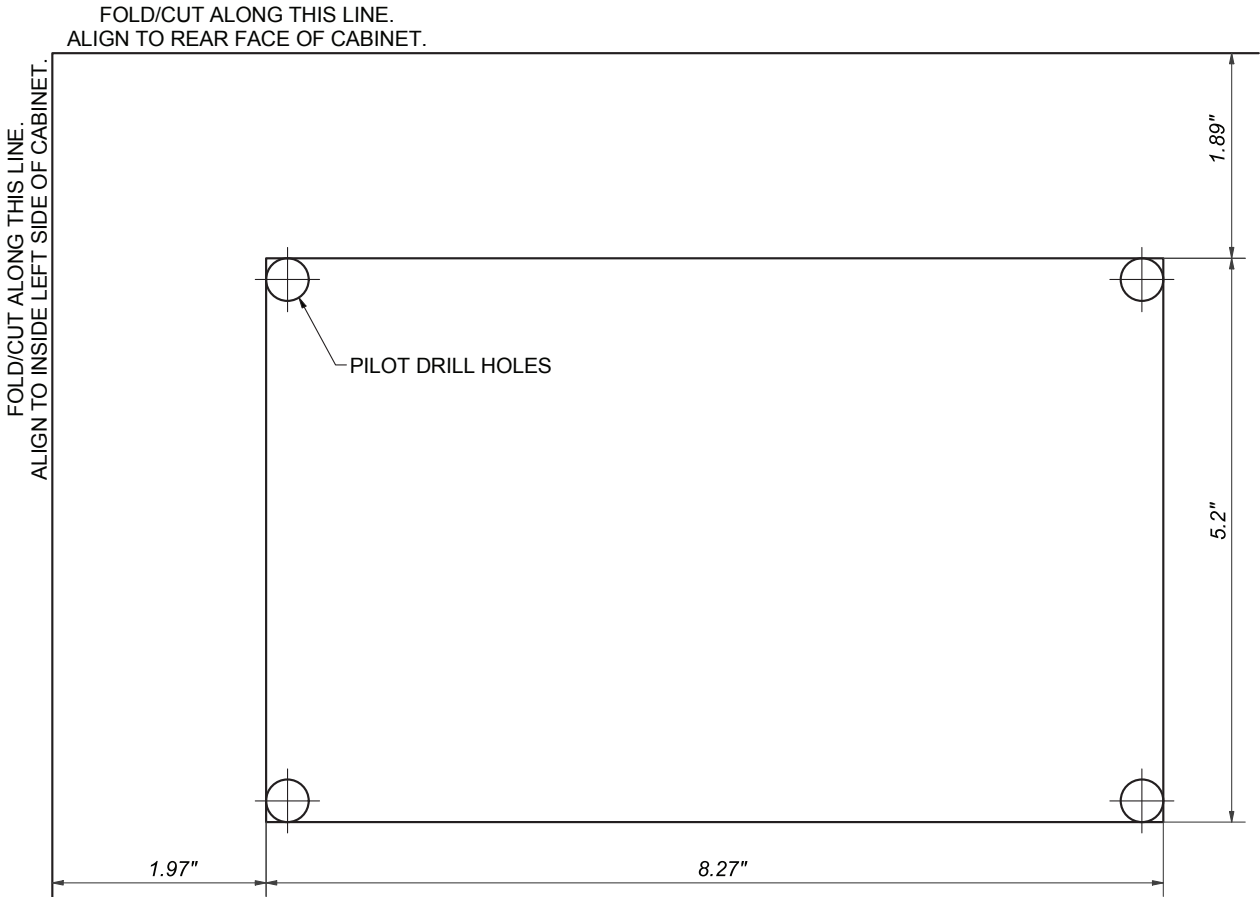
Use for: Q-C20, Q-CS20

3B7698-01 KICK-BOARD CUTTING TEMPLATE.

QSTD-553-BCS

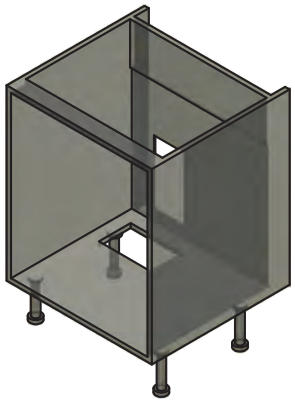
—boiling, chilled and sparkling solutions

VENTILATION DRAWINGS - Base Cutting Template - sample only



IMPORTANT: Before making any cuts into the cupboard or kick board, ensure the area to be cut is free from water pipes or electrical cables. There is a risk of serious injury or death if electrical cables are cut, and significant damage to property if a water pipe is cut.

Use for: Q-C20, Q-CS20



QST-553-BCS

—boiling, chilled and sparkling solutions

EXISTING INSTALLATIONS

We have clients enjoying our Quatreau Touch and SmartTaps (dispensing a variety of water types) in all of these buildings as well as in other commercial offices and prestigious homes across the globe.



WORLD TRADE CENTER - New York

One World Trade Center is the main building of the rebuilt World Trade Center complex in Lower Manhattan, New York City. One WTC is the tallest building in the United States, the tallest building in the Western Hemisphere, and the sixth-tallest in the world.

THE SHARD London

The Shard, also infrequently referred to as the Shard of Glass, Shard London Bridge and formerly London Bridge Tower, is a 95-story supertall skyscraper, designed by the Italian architect Renzo Piano, in Southwark, London, that forms part of the Shard Quarter development.

THE SCALPEL London

The Scalpel is a commercial skyscraper in London, United Kingdom. It is located on Lime Street in the City of London financial area.

SALESFORCE TOWER - London

110 Bishopsgate (formerly Heron Tower now known as Salesforce Tower) is a commercial skyscraper in London. It stands 230 metres (755 ft) tall including its 28-metre (92 ft) mast making it the tallest building in the City of London financial district.

Find out more at www.QuatreauUSA.com

