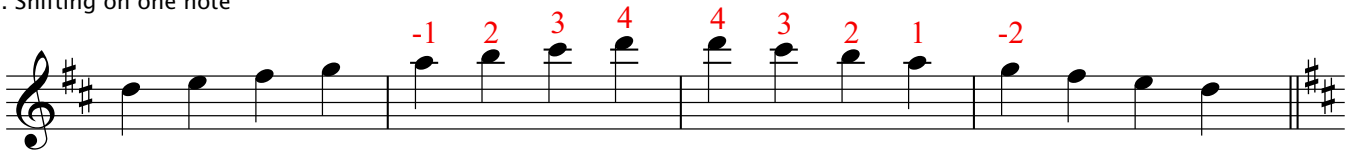


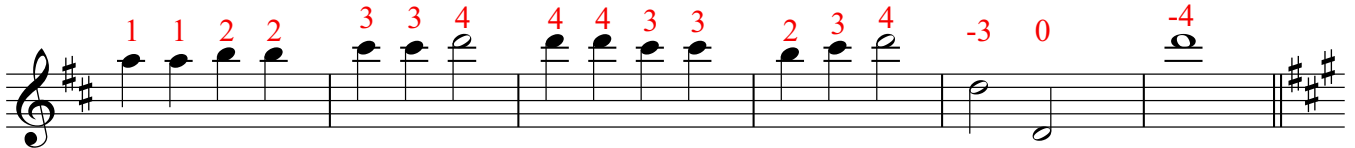
CHEROKEE SHUFFLE TECH CHECK: SHIFTING TO 3RD POSITION

TECH CHECK INSTRUCTIONS: Shifting is the practice of moving your whole hand up the neck of the fiddle to either access higher notes, or later on, for ease of fingering or access to new double stops (Faded Love). As you begin to shift up the neck in this case to catch a few higher notes, there are a few things you should keep in mind. First, make sure you are only playing with one finger at a time. Just like a guitar, the notes get closer together as you move towards the bridge. Also, your LH thumb should not be gripping the fiddle. It should lead the way up and down the neck. Warm up by trying the shift without playing. Then, try this simple D Scale, which emulates the B part of the Cherokee Shuffle break. Notes you shift on are preceded by "-".

1. Shifting on one note



2. Next, try staying in third position. Focus on getting a clean tone and placing only one finger at a time in order to stay in tune.



CHEROKEE SHUFFLE BREAK

