

The State School Reform/Redesign Office (SRO)

An Overview

Natasha S. Baker, Ed.D.
State School Reform Officer
bakern5@Michigan.gov
www.michigan.gov/sro
(517) 202-1444

Mission Statement

Our mission is to turn Priority Schools into the highest performing schools in Michigan.

The State School Reform/Redesign Office's Authority & Responsibilities

Revised School Code 380.1280c

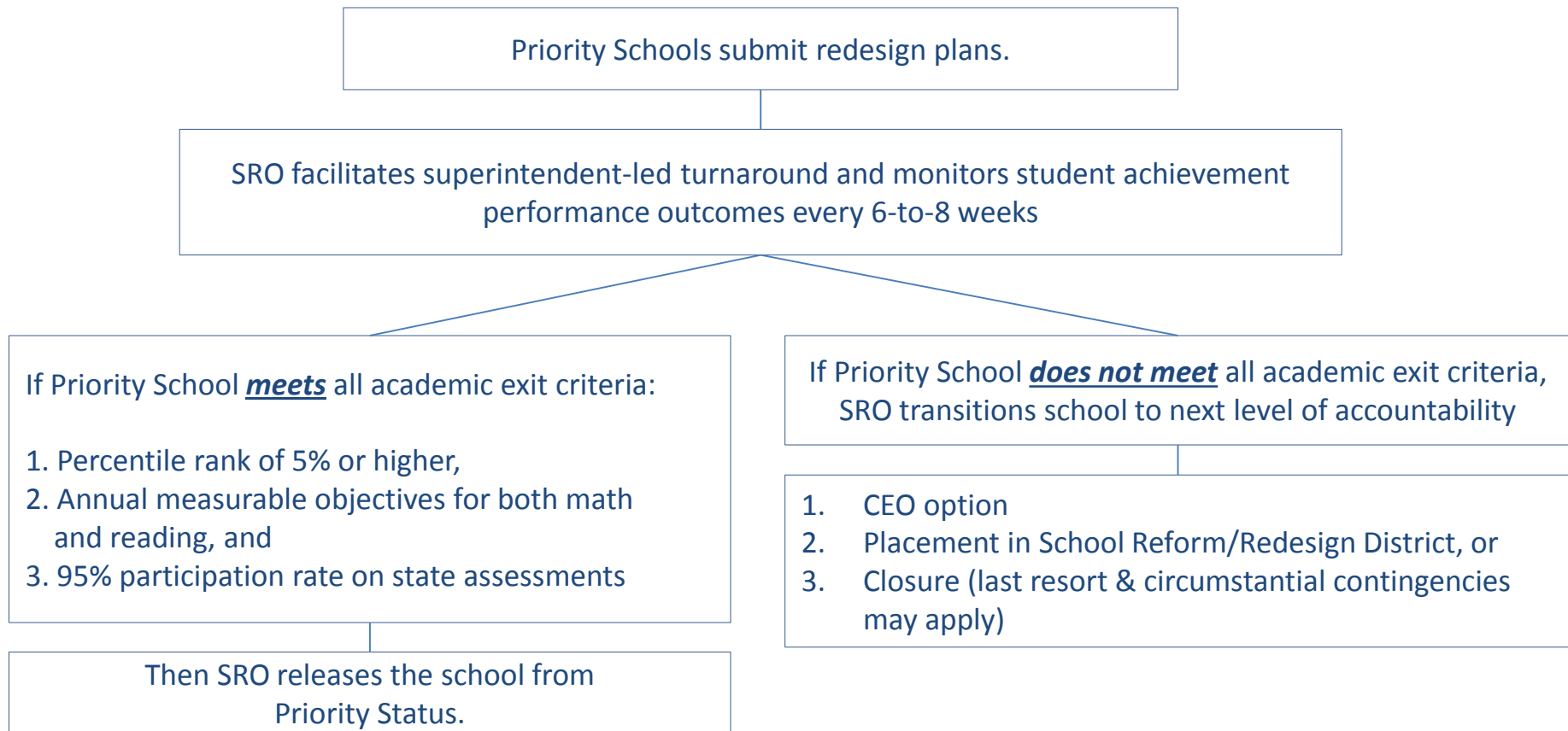
- Assigns responsibility for lowest achieving 5% of schools (Priority Schools) to SRO
- Requires Priority Schools to submit Reform/Redesign plans to improve performance
- Grants authority to implement intervention if academic progress is not made {i.e. CEO operator for multiple schools, State School Reform/Redesign District (SSRRD)}
- Provides exemptions for districts under emergency management

Executive Order No. 2015-9

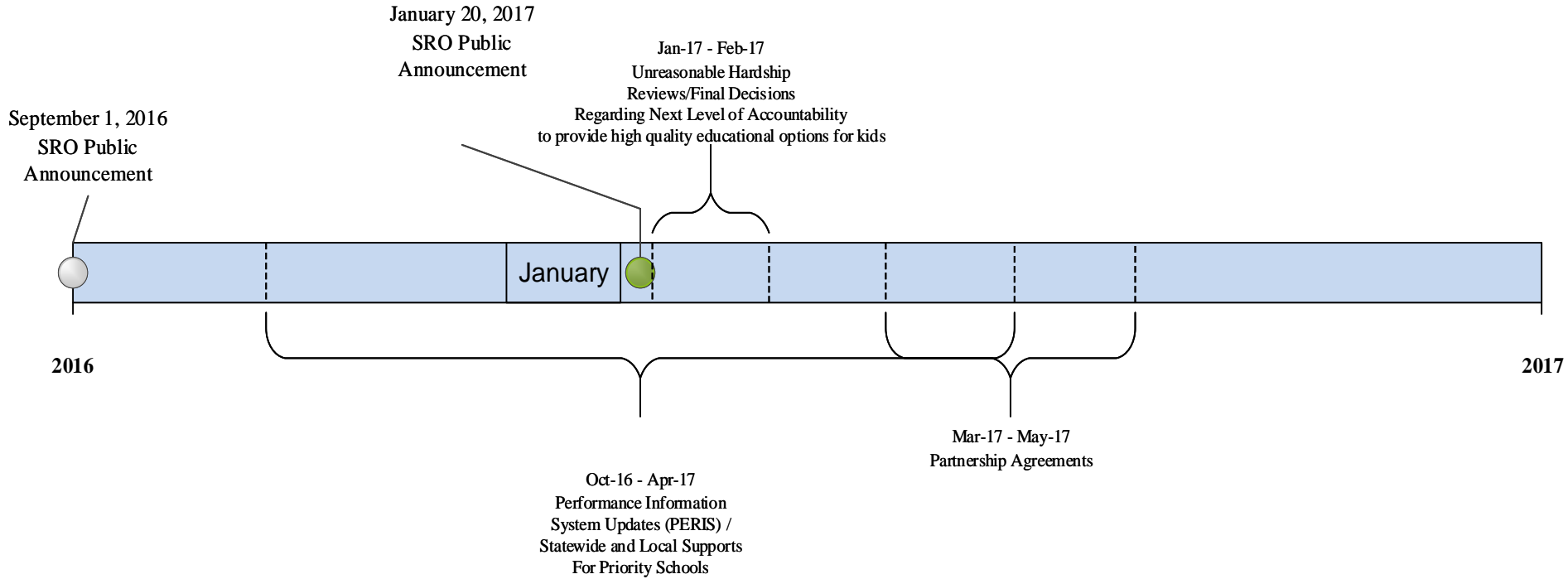
- Transferred duties and responsibilities of the School Reform/Redesign Office to the Department of Technology, Management and Budget (DTMB).

*****See Handout*****

Academic Accountability Process

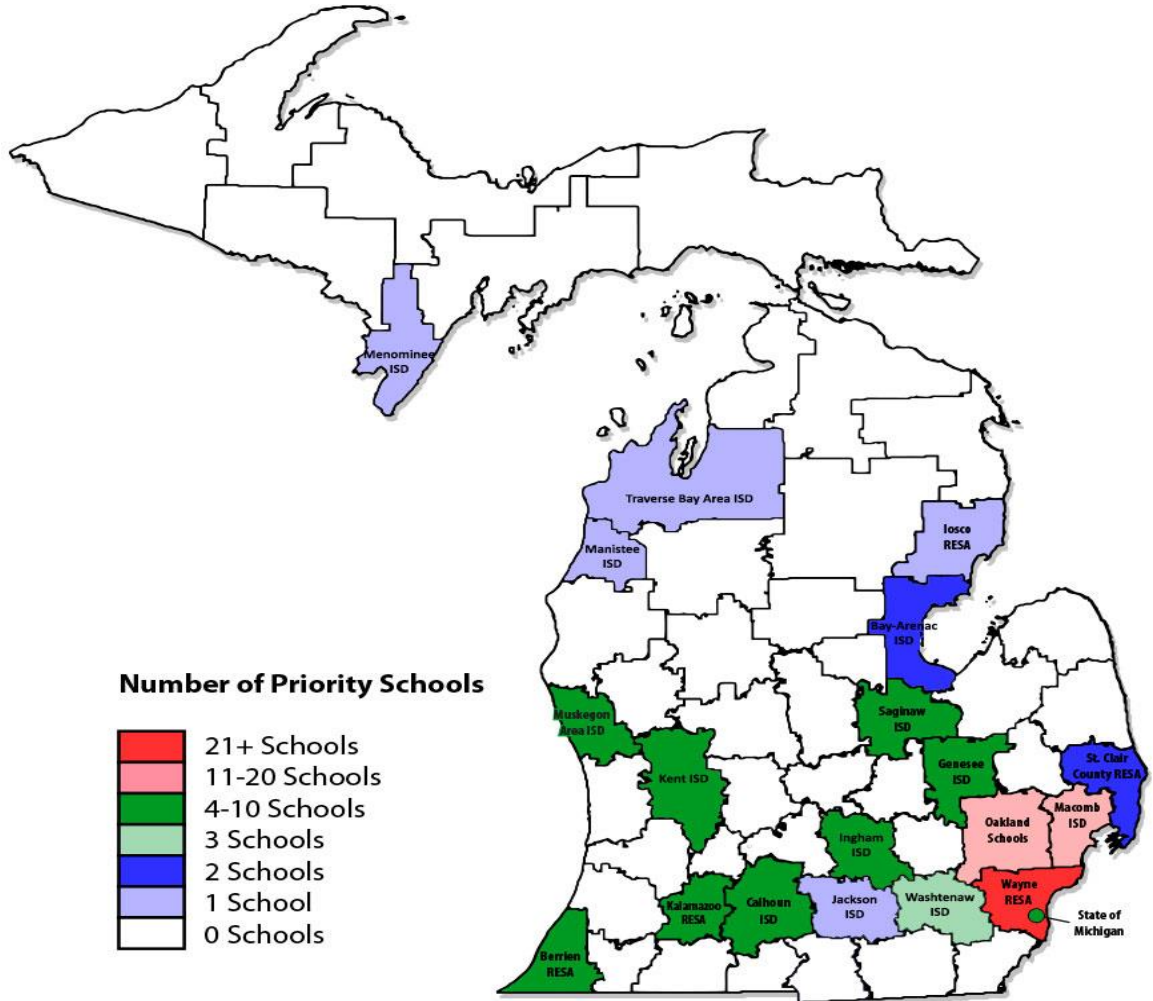


State School Reform/Redesign Office's Academic Accountability Timeline



Michigan's Priority Schools

(by Intermediate School Districts - ISDs)



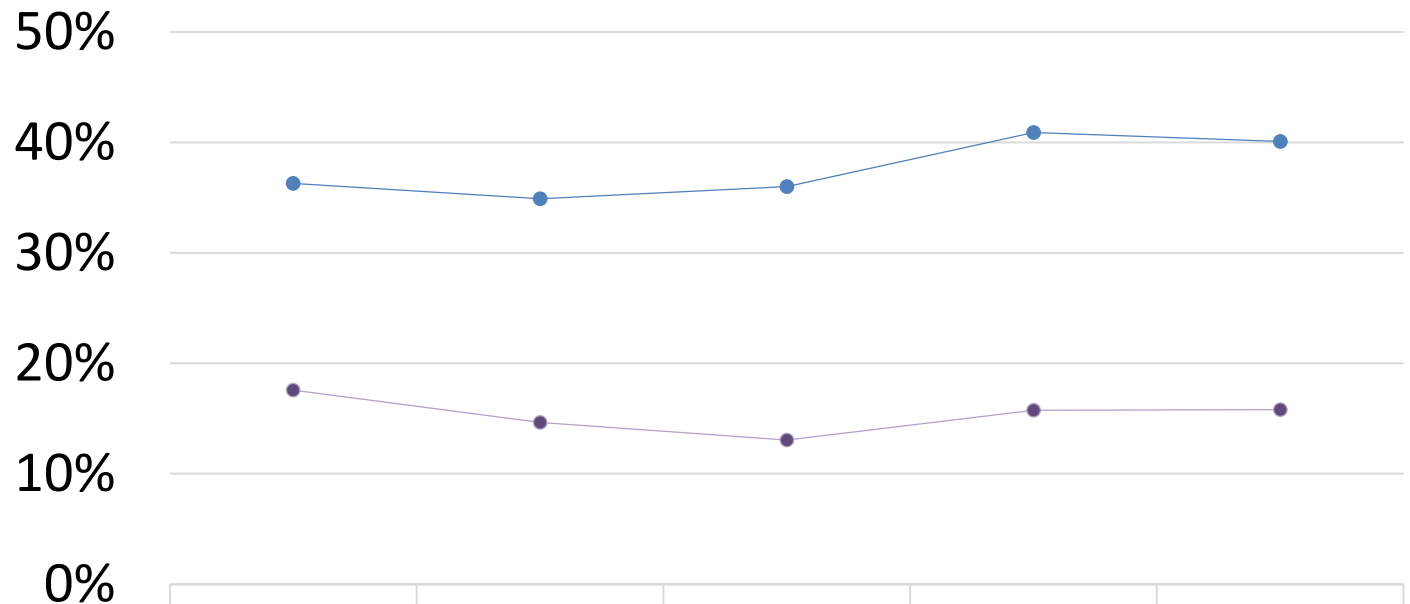
Cohort and Count

Priority/PLA Cohorts				
Cohort	Identified Statewide	Closed	Released	Retained
2010	92	31	38 ¹	18
2011	40	7	23 ²	8
2012	88	23	34	18
2013	51	8	34	9
2014	60	7	11	TBD
2015	51 ³	4	TBD	TBD
2016	45 ⁴	1	TBD	TBD
Subtotal*	427	* Subtotal includes 20 schools renamed in multiple years.		
Total	407	81	140	53

3rd Grade Mathematics

Percent of students scoring Proficient or Advanced in Mathematics, 2009-10 to 2013-14

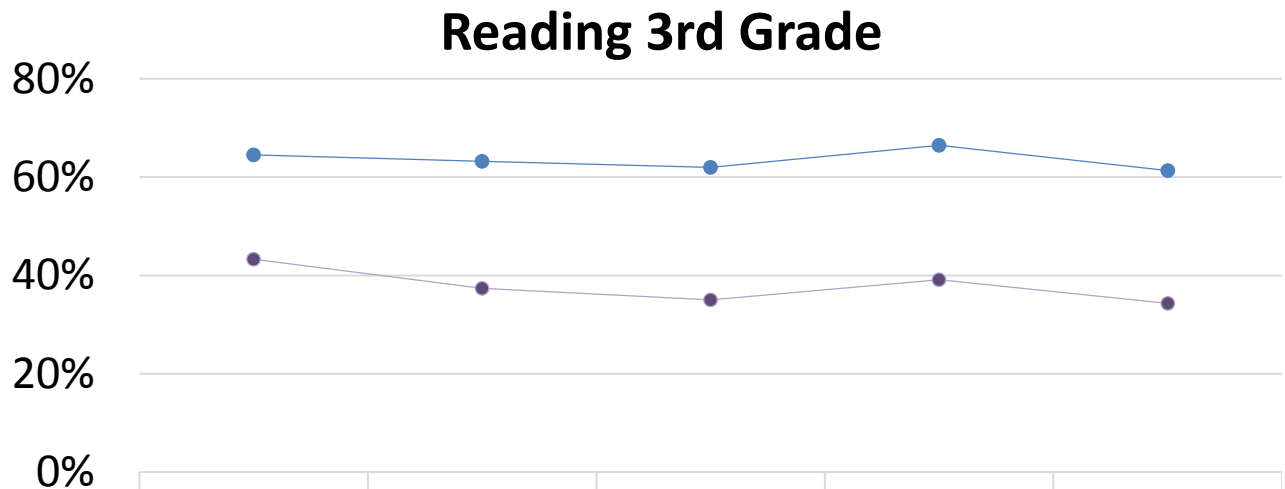
Mathematics 3rd Grade



	2009-10	2010-11	2011-12	2012-13	2013-14
Statewide	36.30%	34.90%	36.00%	40.90%	40.10%
All Priority Schools	17.6%	14.6%	13.1%	15.8%	15.8%

3rd Grade Reading

Percent of Students scoring Proficient or Advanced in Reading, 2009-10 to 2013-14

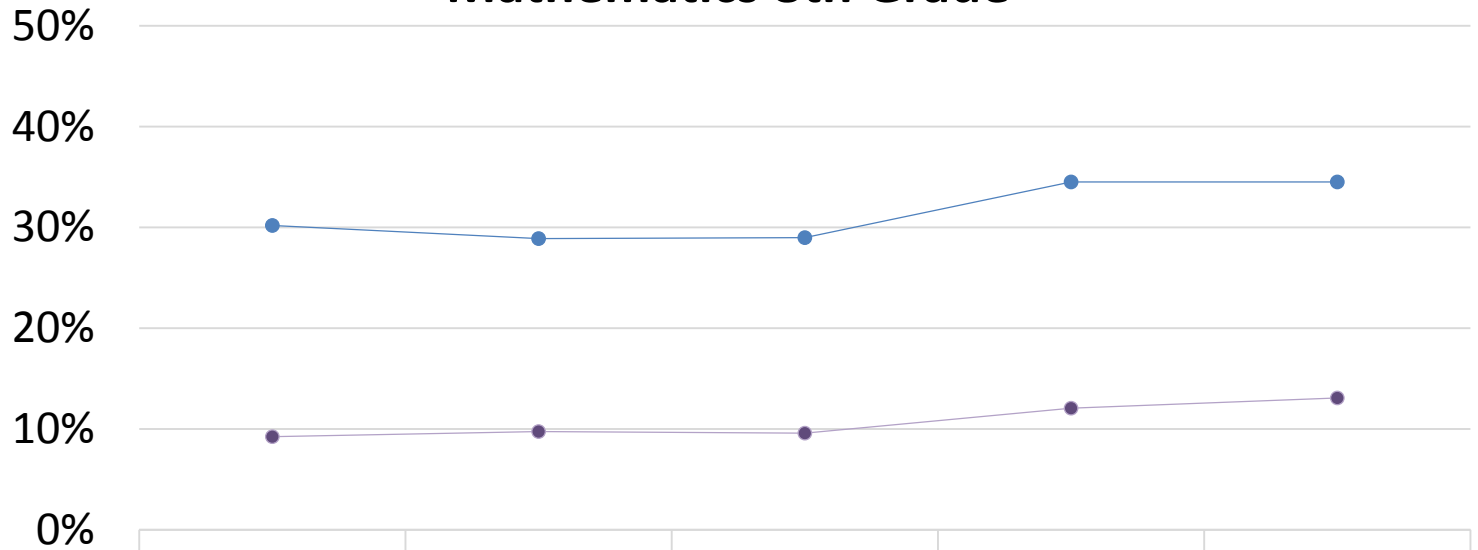


	2009-10	2010-11	2011-12	2012-13	2013-14
Statewide	64.50%	63.20%	62.00%	66.50%	61.30%
All Priority Schools	43.3%	37.4%	35.0%	39.1%	34.3%

8th Grade Mathematics

Percent of students scoring Proficient or Advanced in Mathematics, 2009-10 to 2013-14

Mathematics 8th Grade

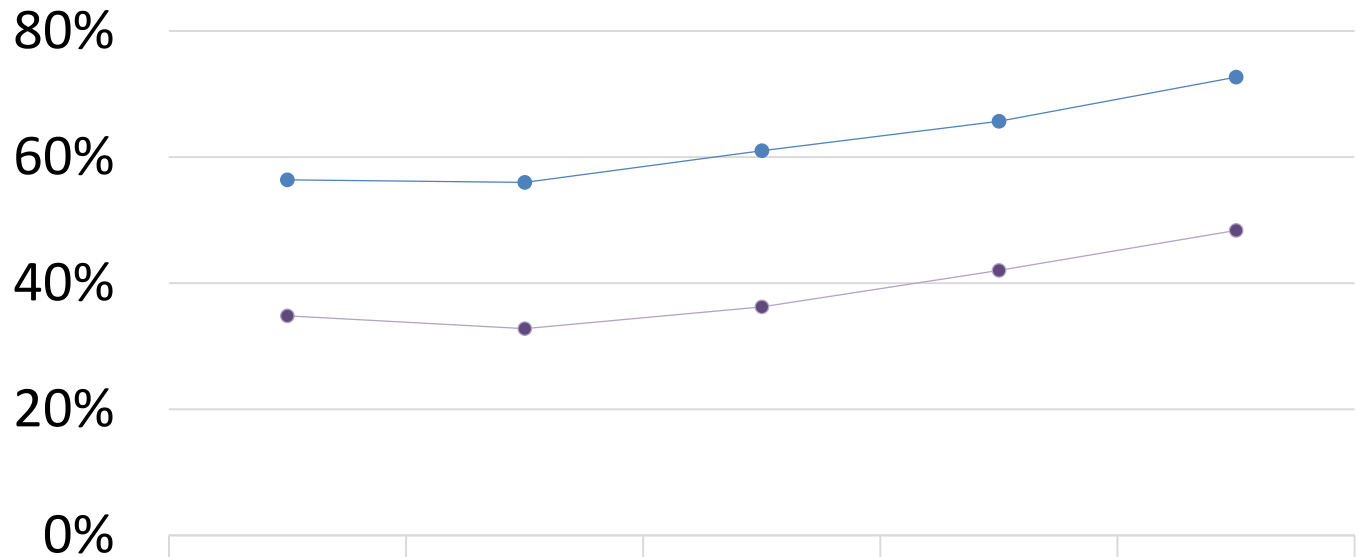


	2009-10	2010-11	2011-12	2012-13	2013-14
Statewide	30.20%	28.90%	29.00%	34.50%	34.50%
All Priority Schools	9.2%	9.8%	9.6%	12.1%	13.1%

8th Grade Reading

Percent of students scoring Proficient or Advanced in Reading, 2009-10 to 2013-14

Reading 8th Grade

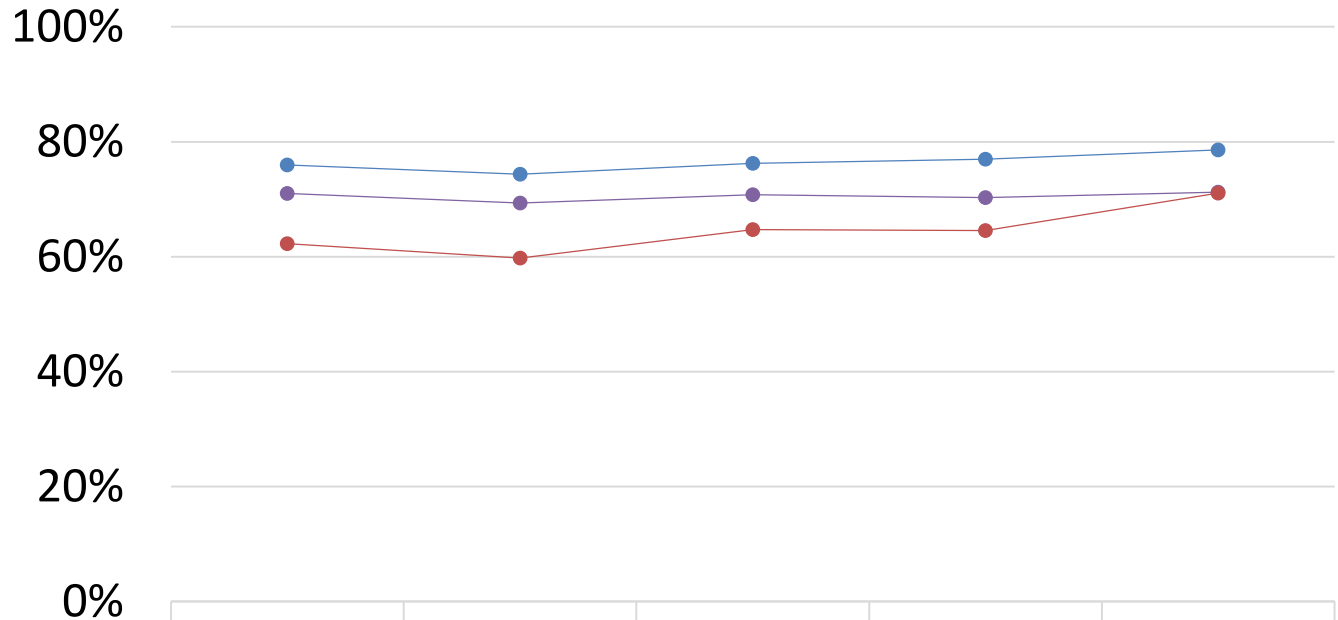


	2009-10	2010-11	2011-12	2012-13	2013-14
● Statewide	56.40%	56.00%	61.00%	65.70%	72.70%
● All Priority Schools	34.8%	32.8%	36.2%	42.0%	48.4%

Graduation Rate

Percentage of students graduating in 4 years

Graduation Rate

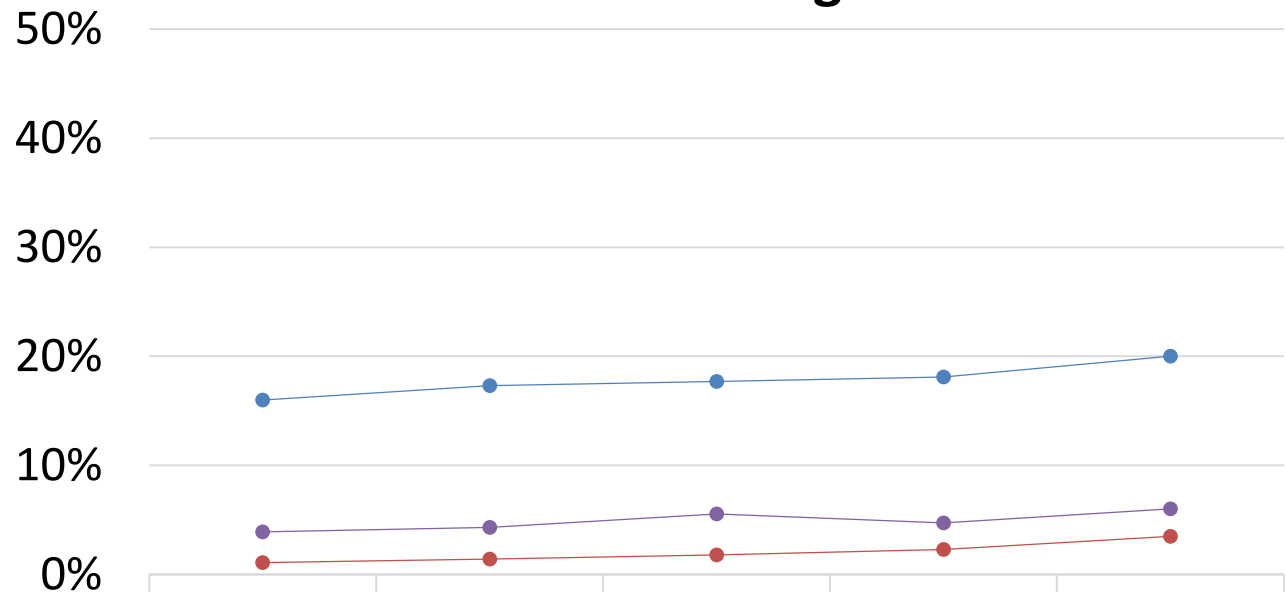


	2009-10	2010-11	2011-12	2012-13	2013-14
—●— State	75.95%	74.33%	76.24%	76.96%	78.58%
—●— All Priority Schools	71.01%	69.33%	70.81%	70.27%	71.21%
—●— Detroit City School District	62.27%	59.74%	64.74%	64.55%	71.05%

College Readiness

Percentage of 11th graders who met college readiness standards

Percent Met College Readiness



	2009-10	2010-11	2011-12	2012-13	2013-14
Statewide	16.00%	17.30%	17.70%	18.10%	20.00%
All Priority Schools	3.90%	4.33%	5.55%	4.72%	6.01%
Detroit City School District	1.10%	1.40%	1.80%	2.30%	3.50%