

Batch# 10-17-19-17.2

Product- Apex CBD Hemp Oil 750mg

CERTIFICATE OF ANALYSIS



Juniper Analytics, LLC
 1334 NE 2nd Street, Bend, OR, 97701
 541.382.3796
 ORELAP: 4101 / OLCC: 010-10035537931

Client Name: Apex Super Foods
 Contact Info: ██████████
 Sample Type: Edible
 External Batch ID: NA
 Harvest/Prod. Date: NA
 Sample ID: 101719-17.2
 METRC ID: Personal
 Juniper Batch #: 19JA2676.01
 Intake Date: 10/18/19

NOT FOR COMPLIANCE

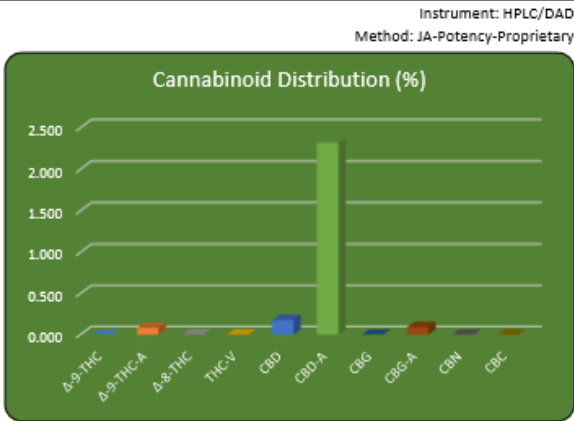
Sample not sampled per
 OAR 333-064-0100



Potency Analysis (Oregon Compliance Standard OAR 333-007-0430)

ANALYSIS DATE: 10/21/19

Compound	Weight (%)	Concentration (mg/g)	LOQ* (mg/g)
Δ-9-THC	< LOQ	< LOQ	0.32
Δ-9-THC-A	0.081	0.81	0.32
Δ-8-THC	< LOQ	< LOQ	0.32
THC-V	< LOQ	< LOQ	0.32
CBD	0.179	1.79	0.32
CBD-A	2.322	23.22	0.32
CBG	< LOQ	< LOQ	0.32
CBG-A	0.092	0.92	0.32
CBN	< LOQ	< LOQ	0.32
CBC	< LOQ	< LOQ	0.32



TOTAL THC/CBD	Weight (%)	Conc (mg/g)
THC Total =	0.071	0.71
CBD Total =	2.215	22.15

$THC_{Total} = (THC-A * 0.877) + Δ9THC$
 $CBD_{Total} = (CBD-A * 0.877) + CBD$

* < LOQ - Less than the Limit of Quantification

Batch QC WorkGroup ID:
 Potency PO-2019-10-21-01

802.2 mg Total Cannabinoids per
 30 ml bottle
 26.74 mg per gram

APPROVAL	
	Report Date: 10/22/19
QA Review	

Disclaimer
The results within this report apply only to the product tested and batched under the batch number identified above. These test results are for the exclusive use of the above named individual or entity. This report must not be altered, and may not be reproduced, except in their entirety, without written consent of Juniper Analytics, LLC. Requests for information regarding these results should be referred to the aforementioned individual or entity.