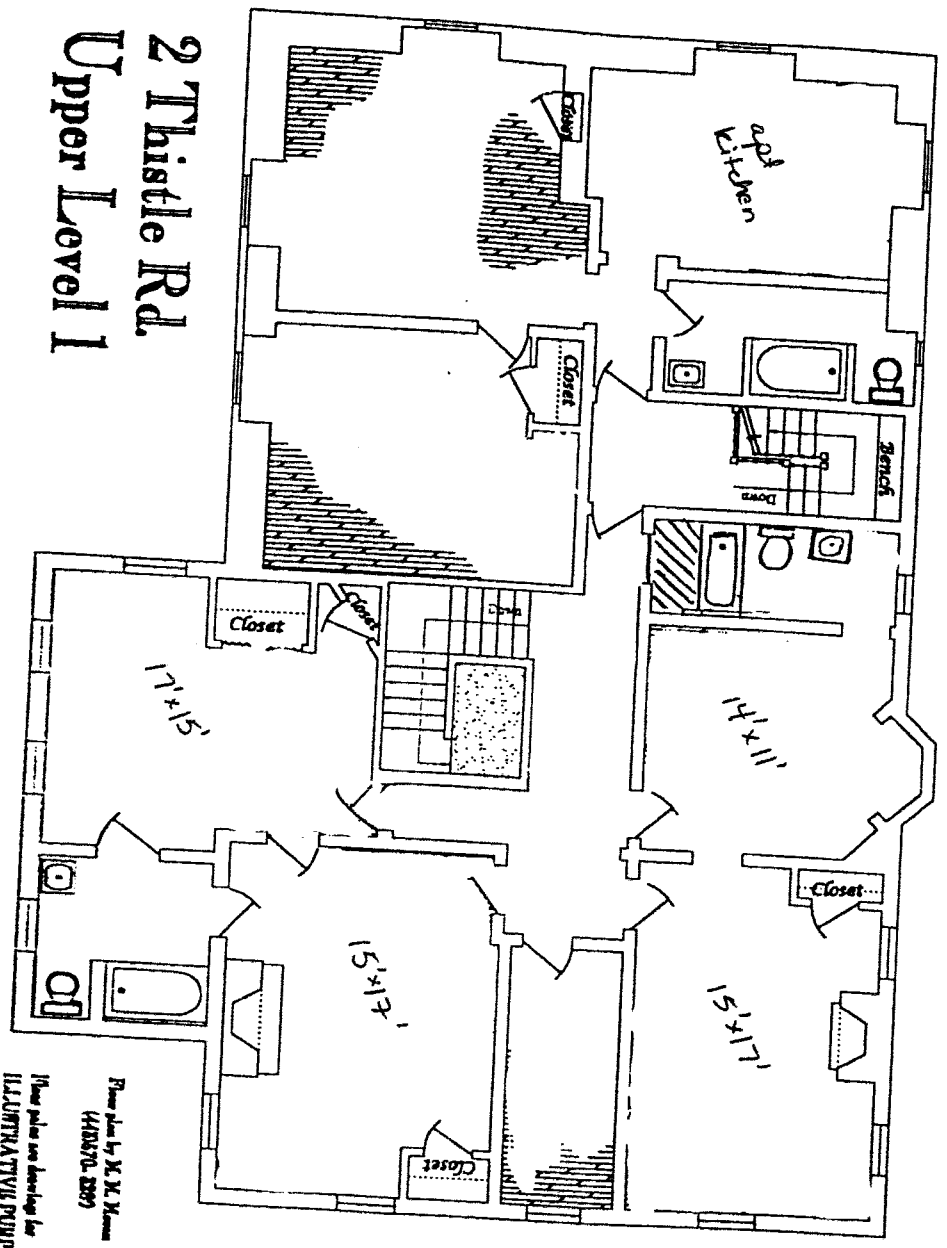


Drawn by: M. M. Mason
 146370-2299
 These plans are designed for
 ILLUSTRATIVE PURPOSES
 ONLY

2 Thistle Rd.
Upper Level 1

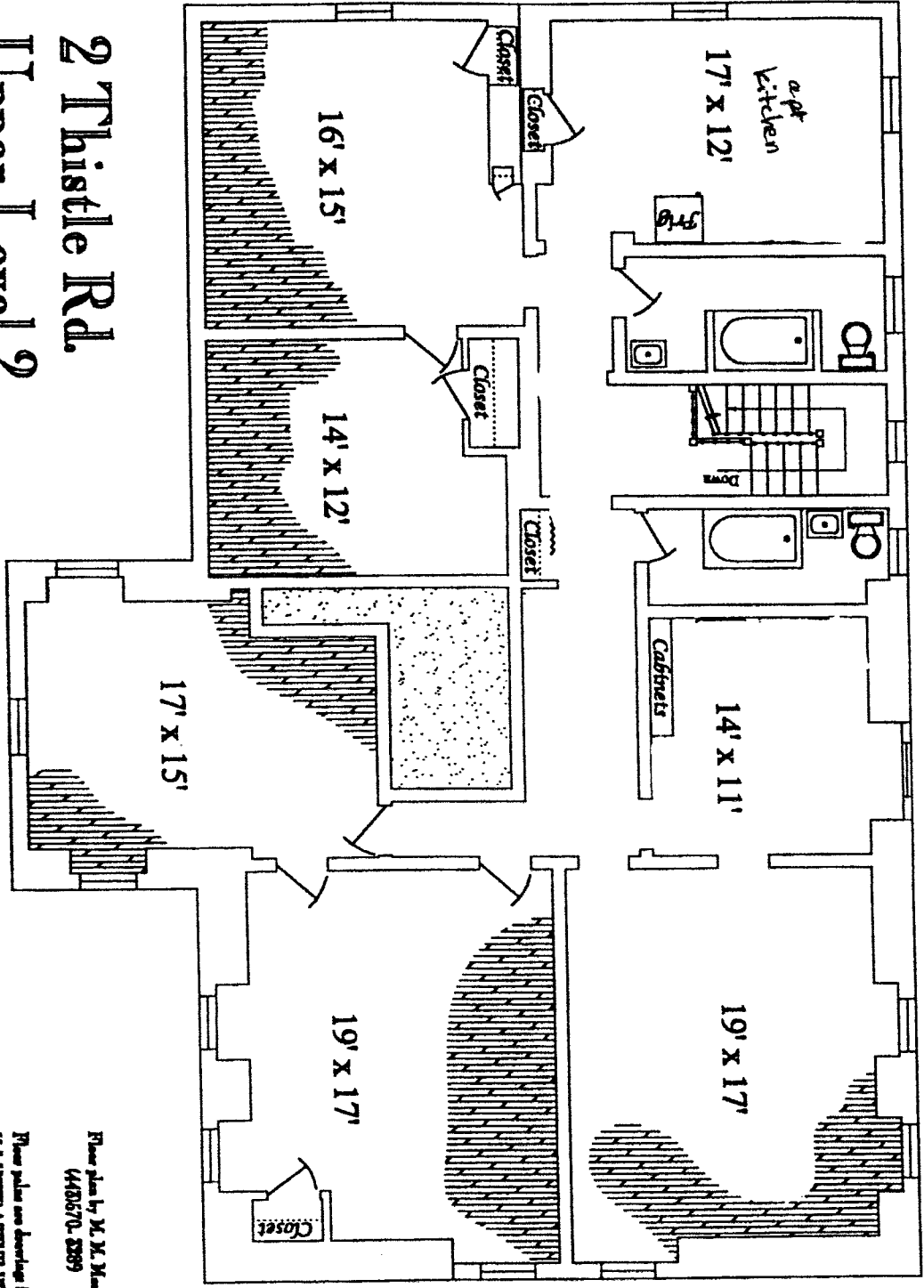


← office and
2nd apt.

→ small bedroom / trunk
room
= 5.5' x 14'

Plan by M. M. Mason
(415) 70-2399
Please refer our drawings for
ILLUSTRATIVE PURPOSES
ONLY

2 Thistle Rd.
Upper Level 2



rented apt
↙

former kitchen
still has sink +
cupboards
↓

Plans by M. M. Mason
(416) 570-2889
These plans are drawings for
ILLUSTRATIVE PURPOSES
ONLY