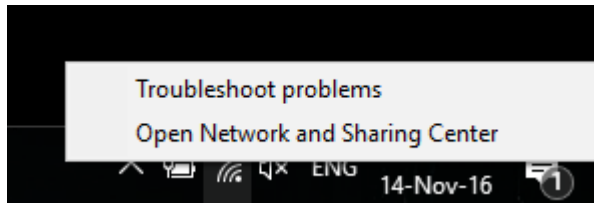


How to turn off IPv6 on Windows OS?

Step 1: Get Started

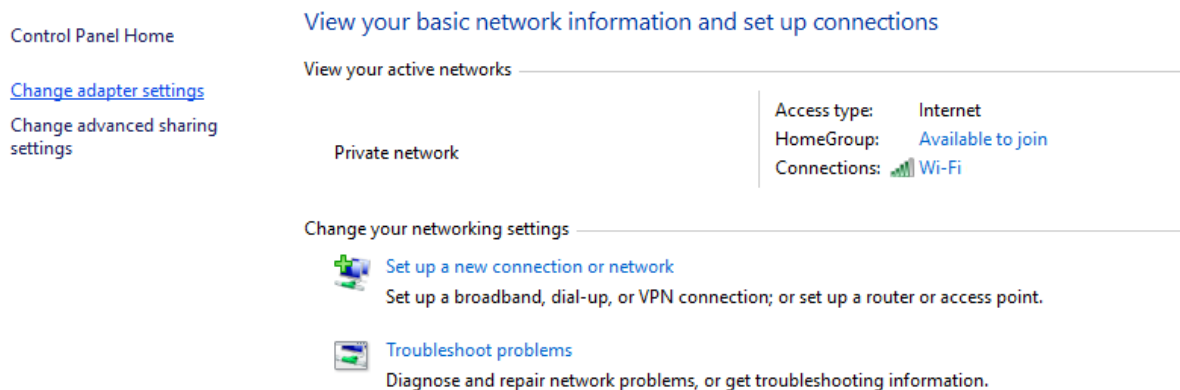
Right-click on the “**Network/Wi-Fi**” icon on the bottom-right hand side of your screen to open up the menu shown below.



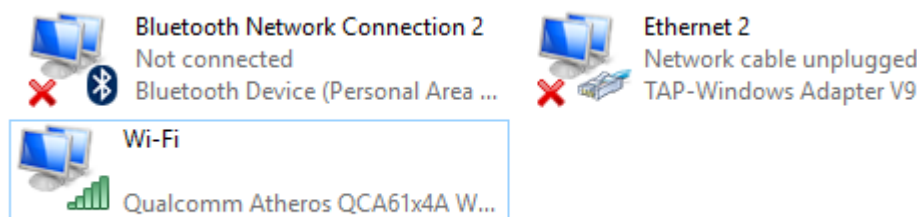
Next, click on **Open Network and Sharing Center**.

Step 2: Change Adapter Settings

In the **Network and Sharing Center** window, click on **Change adapter settings** as shown in the screen shot below.

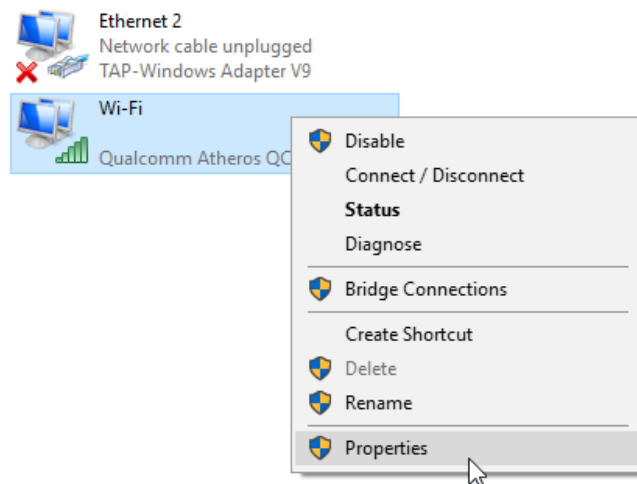


You will then see a list of network adapters available on your computer. (Please refer to the screenshot below for an example of how the list will look like)



Right click on your active network adapter (**Ethernet** or **Wi-Fi**) and select **Properties**.

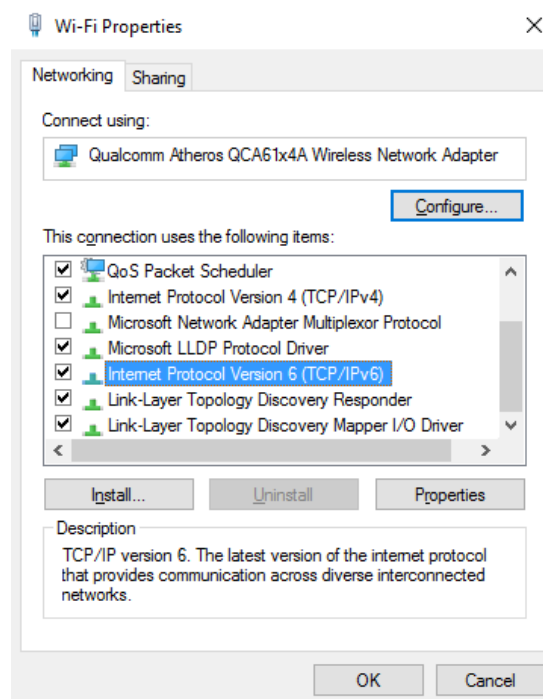
Note: If you're connected to the internet wirelessly, the corresponding adapter should be "**Wi-Fi**". However, if you're connected to the internet via a LAN cable instead, the corresponding adapter should be "**Ethernet**".



Step 3: Disabling IPv6

In the **Properties** window, scroll down until you see **Internet Protocol Version 6 (TCP/IPv6)**.

Un-tick the **Internet Protocol Version 6 (TCP/IPv6)** checkbox and click on **OK** to save the changes.



Step 4: Restart Computer

Now that IPv6 has been disabled on your computer, kindly restart your computer and the internet router for the changes to take affect.

How to disable IPv6 on macOS?

Share this answer

In order to disable IPv6 on newer OS X versions, you will need to run a command through the Terminal application. *Please note that any changes to the network preferences may revert this setting and the command may need to be run again.*

1. Open **Finder**
2. Click on **Applications**
3. Click on **Utilities Folder**
4. Double Click on the **Terminal** app
5. Run the following command in the terminal window:

```
networksetup -listallnetworkservices
```

This will list all of your network interfaces and their names.

6. Identify the network interface you are using, most commonly Ethernet or Wi-Fi. Use the following command in the terminal window to disable IPv6 on that interface. Please note that you may have to use quote marks to envelope the interface name. A few examples:

```
networksetup -setv6off Ethernet
```

```
networksetup -setv6off Wi-Fi
```

You will be prompted to enter your OS X administrator password. Afterwards, IPv6 will be disabled.

While usually not necessary, if you wish to re-enable IPv6 on your device, you can simply run this command in the terminal:

```
networksetup -setv6automatic Wi-Fi
```

```
networksetup -setv6automatic Ethernet
```