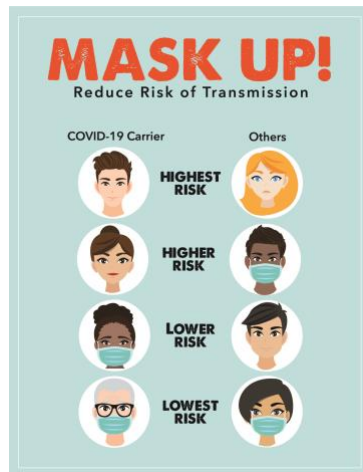
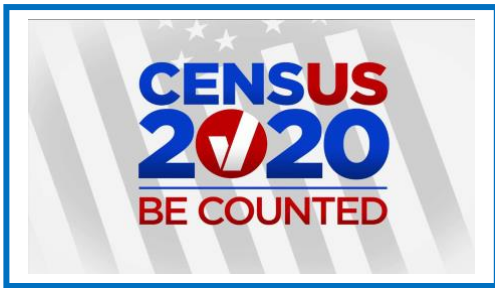




# THE BOROUGH OF **ALLENDALE**

## **Borough of Allendale Happenings...** September 2020

A monthly electronic newsletter to keep residents informed.  
Please encourage friends and neighbors to sign up for  
Constant Contact by [clicking here](#).



### **Mayor Bernstein's Message**

With summer coming to a close, and with school starting, more businesses re-opening and activities and daily routines resuming, I want to remind everyone to Mask Up! and Drive Safe, Drive Smart!

The deadline to complete the 2020 Census is September 30<sup>th</sup>. It's critical that you respond today, [click here](#). We're counting on you!

[www.AllendaleNJ.gov](http://www.AllendaleNJ.gov)

: [Allendale NJ Borough](https://www.facebook.com/AllendaleNJBorough)

: [@AllendaleNJBoro](https://twitter.com/AllendaleNJBoro)



## 2020 General Election Voting Update

Due to the COVID-19 public health emergency, Governor Murphy and the N.J. State Legislature have changed voting procedures for the November 3<sup>rd</sup> General Election:

- All active, registered voters will receive a vote-by-mail ballot without the need to fill out an application.
- The Bergen County Clerk will mail ballots to voters by Monday, October 5, 2020.
- Voters will have several options to return their completed ballot:
  - Option 1: Mail it to the Bergen County Board of Elections in the postage-paid envelope provided with your ballot.
  - Option 2: Drop it in one of the Secure Drop Boxes located throughout Bergen County. Locations will be determined and announced by the Bergen County Board of Elections.
  - Option 3: Return it to your assigned polling place on Election Day.
- There will be two polling locations in Allendale for in-person voting on Election Day from 6am to 8pm. Voters who do not complete their vote-by-mail ballot and instead wish to vote in-person will be given a paper provisional ballot. Only disabled voters and those unable to complete a paper ballot will be able to vote on a voting machine.
- A notice of assigned polling locations will be mailed to voters, but, sample ballots will not and will instead be posted, <http://www.bergenclerk.org/Services/34>.
- The voter registration deadline remains October 13, 2020. The Allendale Clerk's Office will be open until 9pm on October 13<sup>th</sup> to accept voter registration forms.
  - [VOTER REGISTRATION – English](#)
  - [VOTER REGISTRATION – Spanish](#)
  - [VOTER REGISTRATION – Korean](#)

Additional information and announcements regarding the 2020 General Election will be posted as they become available. Questions can be directed to the Bergen County Clerk's Elections Division at (201) 336-7000 or Allendale Clerk's Office at 201-818-4400.

## Crestwood Lake



Allendale, Nj

Labor Day is around the corner and our last day at the lake is **Labor Day, September 7<sup>th</sup>**. We once again want to thank all residents and lake members for another great summer!

We will continue our tradition of having Clan Na Vale pipe out the season. They will play right before we close at 7 pm.

As we all like to gather to watch this festive event, PLEASE remember to wear your masks!

## Annual 9/11 Candlelight Memorial Ceremony



NEVER FORGET.

09.11.2001

The Borough will be holding its Annual 9/11 Candlelight Memorial Ceremony on **Friday, September 11<sup>th</sup> at 7 pm** at the Red Barn. This years' speaker is **Dr. Jeffrey Burkes, Chief of the Dental Identification Unit at the Medical Examiner's Office in NYC**. He will tell his moving recollections of that day and the weeks that followed as the Chief Forensic Dentist. We will also be honoring 5 of our very own first responders who were at Ground Zero on 9/11. The ceremony is rain or shine. Please join us.

**Final Property Tax Bills** will be mailed out by the end of September.

**[Purchase a Train Station Parking Permit](#)**

Valid: 09/01/20 to 08/31/21

Resident Rate: \$75

Non-Resident Rate: \$300

Questions? Call 201-825-1900



**[Visit the Allendale Building Department's page for permit requirements](#)**

As storm season approaches, here is **Generator Safety** info from PSE&G.



**[Bergen County Mental Health & Community Support Resources](#)**

**[Don't Forget to Register Your Pets!](#)**



** Orange & Rockland**

plans to resume their **"System Reliability Project"** on Brookside Ave in late September. Updates will be provided.

**Roadway Repaving Coming Soon...**

**[Cambridge Dr., High St., Heights Rd. & Pearl Ct. \(portion\)](#)**



Notice will be sent when dates are finalized.



**Phase 2 Water Restrictions in Effect**

**Even House Numbers: Tuesday, Thursday, Saturday**



**Odd House Numbers: Wednesday, Friday, Sunday**

- In-Ground Lawn Sprinklers
  - ✓ 12 midnight- 4:00am ONLY
- Hose supplied Lawn Sprinklers
  - ✓ 7:00am to 9:00am
  - ✓ 7:00pm to 9:00pm
-  Washing of buildings or cars is prohibited
-  Hand-watering is permitted for gardens & shrubs
-  Water use for other household purposes is not restricted



# Garbage & Recycling Reminders

**\*\*\*TWICE PER WEEK GARBAGE PICKUP ENDS ON SEPT. 12th\*\*\***

SEPTEMBER PICKUPS  	WEST SIDE			EAST SIDE			
<b>GARBAGE</b>	3 <sup>rd</sup> 14 <sup>th</sup>	8 <sup>th</sup> 21 <sup>st</sup>	11 <sup>th</sup> 28 <sup>th</sup>	1 <sup>st</sup> 15 <sup>th</sup>	4 <sup>th</sup> 22 <sup>nd</sup>	9 <sup>th</sup> 29 <sup>th</sup>	12 <sup>th</sup>
<b>BULK</b>	9 <sup>th</sup>			2 <sup>nd</sup>			
<b>RECYCLING</b>	10 <sup>th</sup> & 24 <sup>th</sup>			3 <sup>rd</sup> & 17 <sup>th</sup>			
<b>METAL</b>	23 <sup>rd</sup>			23 <sup>rd</sup>			

- All Items must be curbside prior to 6am on the day of pickup.
- Wood pallets are not collected by our garbage contractor. You must make your own arrangements to dispose of them.
- You must schedule a one-time, courtesy moveout pickup with [TatianaMarquis@AllendaleNJ.gov](mailto:TatianaMarquis@AllendaleNJ.gov) at least 2 WEEKS prior to closing.
- The complete 2020 Schedule of Collections can be found [here](#).

## Recycling & Compost Center Hours of Operation thru Dec. 13th

**Saturdays** from 9:00 AM until 3:00 PM

**Sundays** from 9:00 AM until 1:00 PM

To apply for a 2020 Compost Permit, [please click here](#).

### Bergen County Utilities Authority Collections

Household Hazardous Waste

**Saturday, September 12th**

9 am - 3 pm Rain or Shine



Tires/Electronics/Paper Shredding

**Sunday, October 4th**

9 am - 2 pm Rain or Shine



Bergen County Campgaw Mountain Reservation

200 Campgaw Rd, Mahwah

Free – Open to Bergen County Residents Only – ID required

For more info, [click here](#)



## Fall Mum Sale to Benefit Lee Memorial Library

Order luxuriant, eye-catching mums from the Friends of the Lee Memorial Library! Offered in apple red, haystack yellow, acorn bronze, harvest moon white and wine purple, they're just \$6 each. Orders will be accepted through Sept. 20. [Click here for link to online form.](#) Paper order forms are available at the library. Pickup is scheduled for Sept. 30 at the Red Barn between 12:00pm - 5:00pm. Please make checks payable to FRIENDS OF LEE MEMORIAL LIBRARY and mail or drop off to: 500 West Crescent Ave, Allendale, NJ 07401. Contact [SuzanneWarzala@gmail.com](mailto:SuzanneWarzala@gmail.com) or 201-923-9252 with any questions. Enjoy the autumn's beauty - and thank you for your support!



This global pandemic has impacted each of us in profound ways and also reminds us of how fortunate we are to live in a community like Allendale.

A group of Allendale citizens has come together to help our community members in need. Our mission is simple: Help Allendale residents who are struggling financially while simultaneously supporting local businesses. We are a 501c(3) organization and your donations are tax-deductible. For more info on **Allendale Circle of Support** & if you need help or you're able to donate, please visit [www.allendalecos.org](http://www.allendalecos.org).

## Calling All Allendale Residents... Participate in AWC's Town Wide Garage Sale



Saturday, Sept. 26 from 9:00 am until 4:00 pm  
(Rain Date Sunday, Sept. 27)

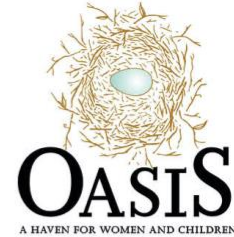
Simplify your garage sale by letting the woman's club handle the details; event advertising, permits, signage and maps. Please mail your tax-deductible donation of \$30 to AWC, 100 Elmwood Ave, Allendale, NJ 07401. For more info visit [www.allendalewomansclub.org](http://www.allendalewomansclub.org) or contact Molly at 201-925-0254 or [MollyKisselPatrick@weichert.com](mailto:MollyKisselPatrick@weichert.com).



Allendale/Saddle River  
**Rotary**  
Club



[www.asrrotary.org](http://www.asrrotary.org)



JOIN US IN SUPPORTING

## “Allendale Serves Oasis”

In addition to the Allendale/Saddle River Rotary (ASRR) food pick-ups, the ASRR club will now be organizing, ready-made meals prepared by our outstanding Allendale restaurants.



All money collected will be disbursed to participating Allendale restaurants, who will then prepare meals and deliver to Oasis.

Due to the overwhelming need for prepared meals, Oasis has has requested assistance in helping with the overload of families in needs of meals.

Please visit our [www.asrrotary.org](http://www.asrrotary.org) and click the link on the right **Donate “Allendale Serves Oasis”** or mail a check payable to: Allendale Saddle River Rotary, PO Box 124, Allendale

Questions?? Email: [info@asrrotary.org](mailto:info@asrrotary.org) or call Scott Miller (201) 960-3240 or Dee Dee Butwin (201) 739-4616

*Thank you for your generosity!*



## **Mayor & Council Meetings**

September 10, 2020 at 7:30pm  
&  
September 24<sup>th</sup> at 7:30pm

**To join the meeting from your computer, tablet or smartphone.**

<https://global.gotomeeting.com/join/302918517>

**You can also dial in using your phone.**

Phone Number: [\(872\) 240-3212](tel:(872)240-3212)

Access Code: 302-918-517

**New to GoToMeeting?** Get started by clicking below.

<https://global.gotomeeting.com/install/302918517>

## **Allendale Water Community Meeting**

Wednesday, September 16<sup>th</sup> at 7pm

Please join Councilwoman Liz Homan, Water Committee Chair, for a Virtual Community Presentation/meeting on Allendale Water.

### **Agenda**

- Allendale Water & System Components
- Working relationship with Suez
- Allendale Water Utilization
- Use of water restrictions current/future
- Water Quality – CCR Report
- Q&A

**To join the meeting from your computer, tablet or smartphone.**

<https://global.gotomeeting.com/join/199942237>

**Dial [\(872\) 240-3212](tel:(872)240-3212) from a phone & enter Access Code [199-942-237](https://global.gotomeeting.com/join/199942237)**

**New to GoToMeeting?** Get started by clicking below.

<https://global.gotomeeting.com/install/199942237>

Any questions please e-mail Councilwoman Homan at  
[lzhoman@allendalenj.gov](mailto:lzhoman@allendalenj.gov)



**Administrative offices remain closed to the public, however we are working.  
Please reach out if we can be of assistance. Borough Phone No. (201) 818-4400**

**ADMINISTRATION & CLERK'S OFFICE**

Ron Kistner, *Administrative Officer*  
[RonKistner@AllendaleNJ.gov](mailto:RonKistner@AllendaleNJ.gov) OR Ext. 501

Michelle Ryan, *Acting Clerk*  
[MichelleRyan@AllendaleNJ.gov](mailto:MichelleRyan@AllendaleNJ.gov) OR Ext. 216 & 200

Tatiana Marquis, *Deputy Clerk*  
[TatianaMarquis@AllendaleNJ.gov](mailto:TatianaMarquis@AllendaleNJ.gov) OR Ext. 218

**BOARD OF HEALTH & TAX ASSESSOR'S OFFICE**

Carolyn Pistone, *Board Secretary*  
[CarolynPistone@AllendaleNJ.gov](mailto:CarolynPistone@AllendaleNJ.gov) OR Ext. 211

Angela Mattiace, *Tax Assessor*  
[AngelaMattiace@AllendaleNJ.gov](mailto:AngelaMattiace@AllendaleNJ.gov) OR Ext. 210

**VITAL STATISTICS RECORDS**

Northwest Bergen Regional Health Commission  
201-445-7217

**BUILDING DEPARTMENT & LAND USE**

Stephanie Geisler, *Technical Assistant*  
[StephanieGeisler@AllendaleNJ.gov](mailto:StephanieGeisler@AllendaleNJ.gov) OR Ext. 201

Linda Garofalo, *Land Use Administrator*  
[LindaGarofalo@AllendaleNJ.gov](mailto:LindaGarofalo@AllendaleNJ.gov) OR Ext. 212

**TAX & FINANCE OFFICE/WATER PAYMENTS**

Alissa Mayer, *CFO & Water Collector*  
[AlissaMayer@AllendaleNJ.gov](mailto:AlissaMayer@AllendaleNJ.gov) OR Ext. 205

Gina Wittmaack, *Tax Clerk*  
[GinaWittmaack@AllendaleNJ.gov](mailto:GinaWittmaack@AllendaleNJ.gov) OR Ext. 206

**LEE MEMORIAL LIBRARY**

[aldlcirc@bcccls.org](mailto:aldlcirc@bcccls.org) OR 201-327-4338

**ALLENDALE MUNICIPAL COURT**

Rose Novelli-Salyer, *Court Administrator*  
[novellir@ho-ho-kusboro.com](mailto:novellir@ho-ho-kusboro.com) OR 201-652-0699

# Mayor & Council

**Ari Bernstein**, Mayor – [AriBernstein@AllendaleNJ.gov](mailto:AriBernstein@AllendaleNJ.gov)

**Amy Wilczynski**, Council President – [AmyWilczynski@AllendaleNJ.gov](mailto:AmyWilczynski@AllendaleNJ.gov)  
*Facilities, Parks & Recreation Committee*

**Liz Homan**, Councilwoman – [LizHoman@AllendaleNJ.gov](mailto:LizHoman@AllendaleNJ.gov)  
*Water, Sewer & Public Utilities Committee*

**Ed O'Connell**, Councilman – [EdwardOConnell@AllendaleNJ.gov](mailto:EdwardOConnell@AllendaleNJ.gov)  
*Public Safety Committee*

**Matt O'Toole**, Councilman – [MatthewOToole@AllendaleNJ.gov](mailto:MatthewOToole@AllendaleNJ.gov)  
*Administration, Finance & Human Resources Committee*

**Steve Sasso**, Councilman – [SteveSasso@AllendaleNJ.gov](mailto:SteveSasso@AllendaleNJ.gov)  
*Land Use & Construction Code Committee*

**Jim Strauch**, Councilman – [JimStrauch@AllendaleNJ.gov](mailto:JimStrauch@AllendaleNJ.gov)  
*Public Works Committee*



**Did you know...All Council, Land Use and Board of Health Meetings are audio recorded** and can be accessed via [www.AllendaleNJ.gov](http://www.AllendaleNJ.gov) the day after each meeting. Just go to the [Agenda/ Audio/Minutes](#) tab or [click here](#). Agendas and backup materials are also available up to 24 hours before each meeting.