



First Eight Memphis

Building our city's future from the start

Community Partners



Over the past four years, a diverse coalition of stakeholders co-developed a comprehensive plan to ensure all children and families in Shelby County receive the aligned, high-quality support they need from birth so that all children read on grade level by third grade.

- LeBonheur Children's Hospital
- Hyde Family Foundations
- Pyramid Peak Foundation
- Memphis Chamber of Commerce/
Chairman's Circle
- Bartlett City Schools
- Ready Set Grow/MAEYC
- City of Memphis
- Tennesseans for Quality Early
Education

- ACE Foundation
- Shelby County Education Foundation
- University of Memphis
- Seeding Success
- Memphis Tomorrow
- Achievement School District
- Shelby County Government
- Memphis Chamber Moon Mission
- Memphis Association for the Education of
Young Children

- The Urban Child Institute
- Millington Municipal Schools
- Shelby County Mayor's Office
- Shelby County Schools
- TN Department of Education
- Southwest Tennessee Community
College
- Porter-Leath
- Early Success Coalition
- TN State Government





As part of a larger economic mobility strategy, this coordinated intervention in early childhood education presents one of the strongest avenues for mitigating the negative effects of poverty and adverse childhood experiences in Shelby County.

Challenges

- **52%** of children kindergarten ready
- **24%** of 3rd graders are reading on grade-level
- **45%** of Memphis children live in **poverty**
- **24%** of Memphis families experience one ACE factor
- Over **260,000** individuals in Memphis live in **poverty**, of those **35,000** are children ages 0-5
- There is a **2.8%** likelihood for Memphians born into the lowest economic quintile to move to the highest economic quintile

Goals

Short-term

90% of children kindergarten ready by **2025**

90% of 3rd graders reading on grade-level by **2025**

Long-term

To **serve** the majority of our at-risk children 0-8 and their families who are vulnerable to poverty at a level that will make **sustained improvements** in the lives of residents & create **economic returns** for Shelby County.

Current State of Early Childhood Education



The current early childhood education system operates as an array of siloed programs that serves approximately 9,500 children 0-5, and does not have formal processes to ensure a successful transition from pre-k into the K-12 system.

Home Visitation

Programs that serve families during a child's prenatal to 3 years to support the most at-risk births in Shelby County for healthy development.

**Currently serves:
1000 families**

Childcare

Schools that focus on child development and care. Traditionally for ages 0-3. Access to quality childcare is limited to Early Head Start and NAEYC Centers

**Currently serves:
1000 children**

Pre-K

High quality pre-k has shown to level the academic playing field for children from disadvantaged backgrounds.

**Currently serves:
7500 children**

K-3rd

Aligned in & out of school services and resources would support children reading on-level by 3rd grade,

Outcomes

52% of children currently enter kindergarten ready-to-learn.

24% of 3rd graders are reading on grade-level

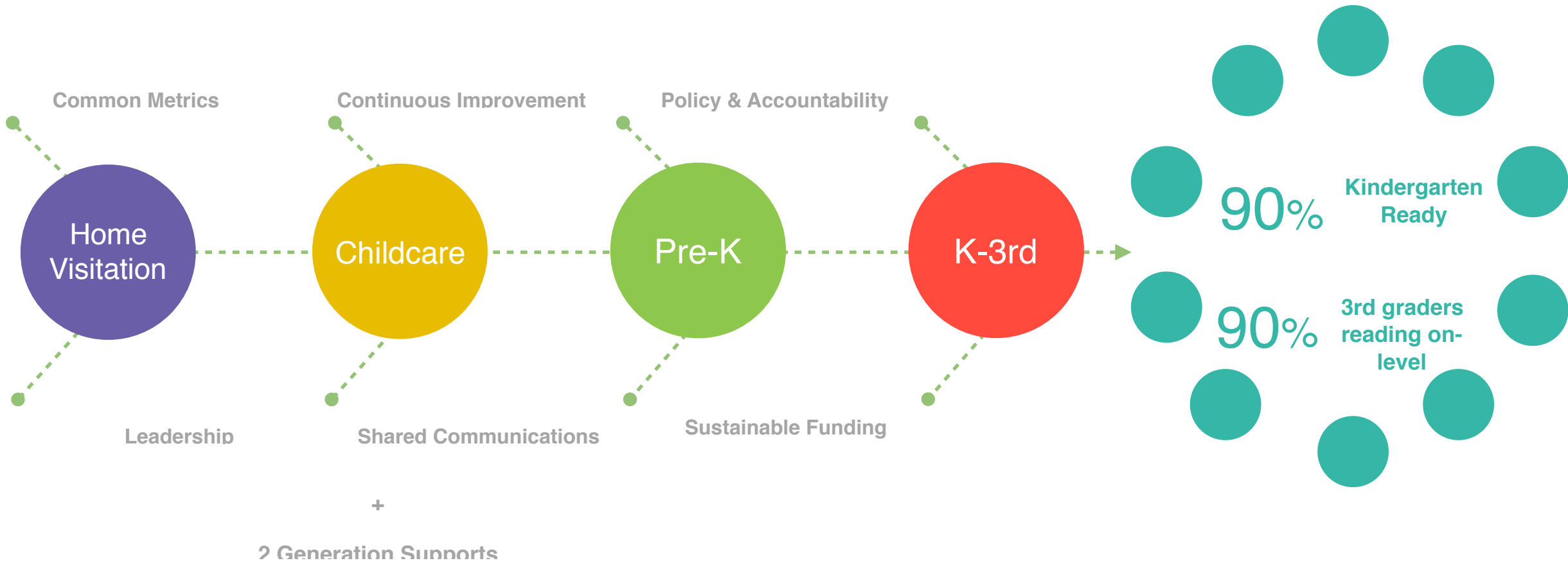
**Total currently served:
9,500 children**



Paving a Path to Success



Strategic alignment and expansion of services will result in a cohesive system that intersects high quality education and 2 gen supports to successfully prepare the majority Shelby County children for Kindergarten readiness, 3rd grade literacy, and beyond.

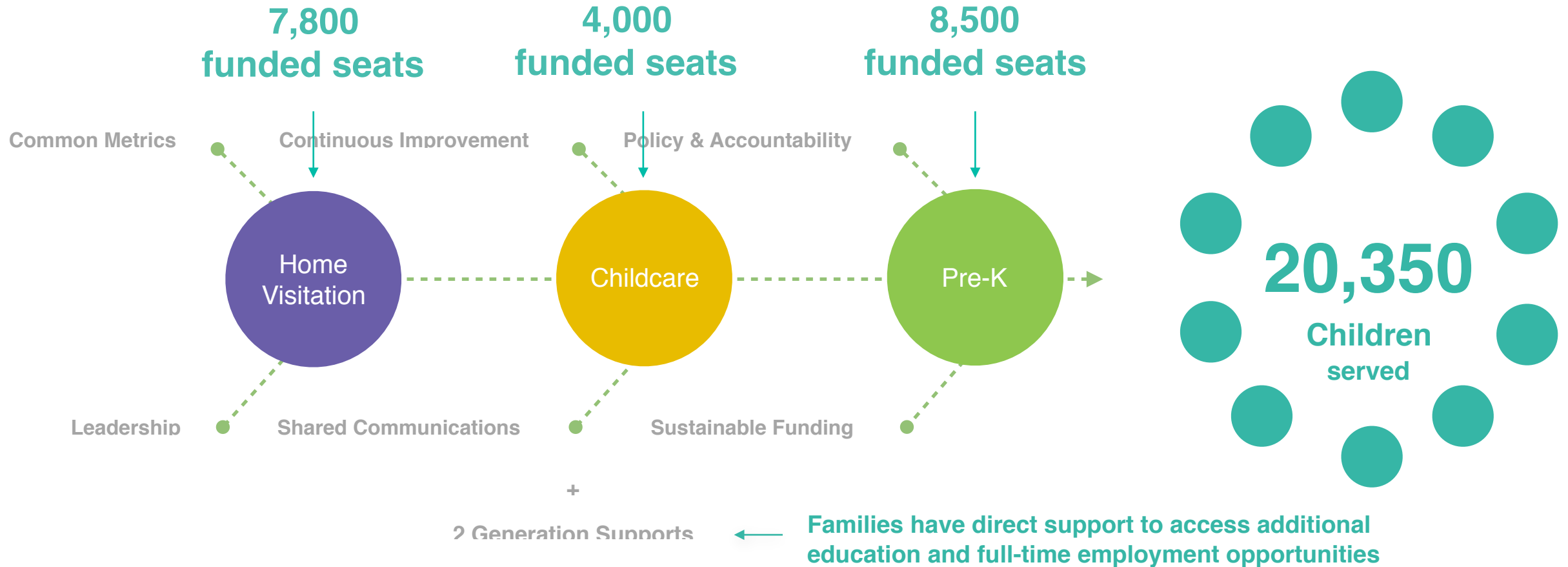


* The supportive backbone, comprised of Seeding Success, Porter Leath, Early Success Coalition, and SCS Division of Early Learning and Head Start will guide and evaluate the system to ensure effectiveness, quality, and efficiency.

Developing A New System



A formalized 0-5 system fully-funded by 2020 will not only serve the majority of at-risk 0-5 year olds and prepare 90% of children for Kindergarten by 2025, but will also serve their families through wraparound supports and job opportunities.

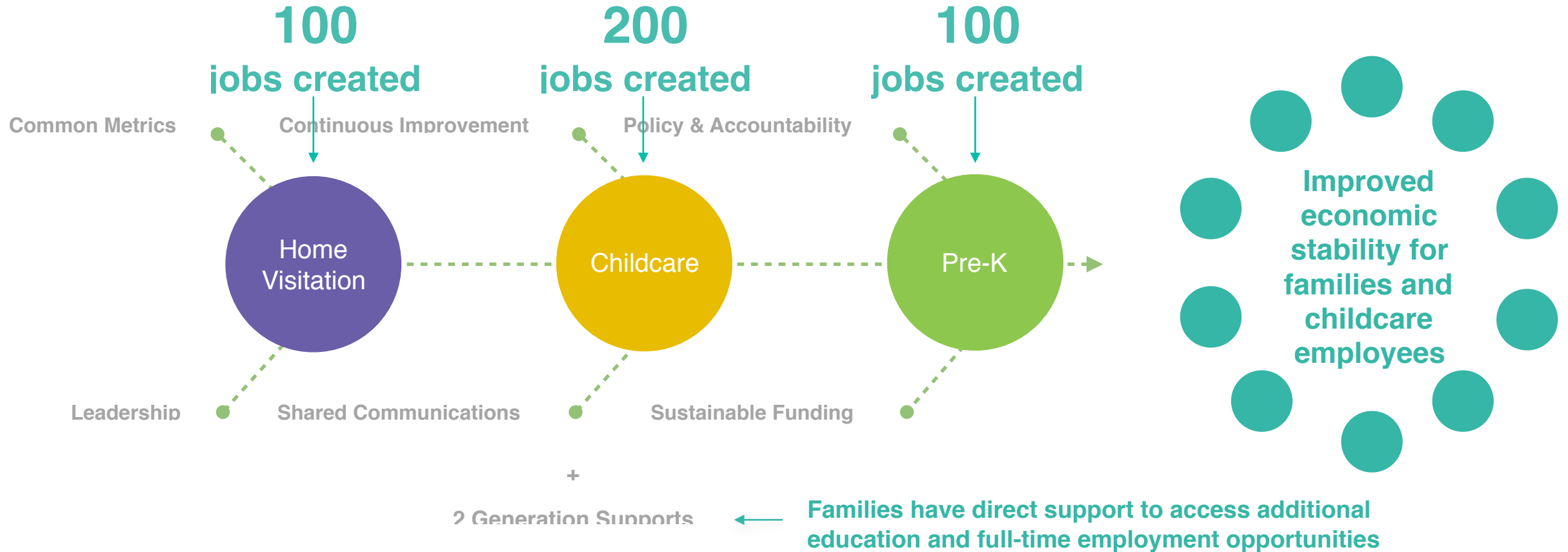


* The supportive backbone, comprised of Seeding Success, Porter Leath, Early Success Coalition, and SCS Division of Early Learning and Head Start will guide and evaluate the system to ensure effectiveness, quality, and efficiency.

Workforce Benefits



Research indicates that accessible childcare is a critical component of workforce stability. Locally, expansion of high quality ECE services will both directly create jobs and allow caregivers to pursue full-time employment &/or educational opportunities.

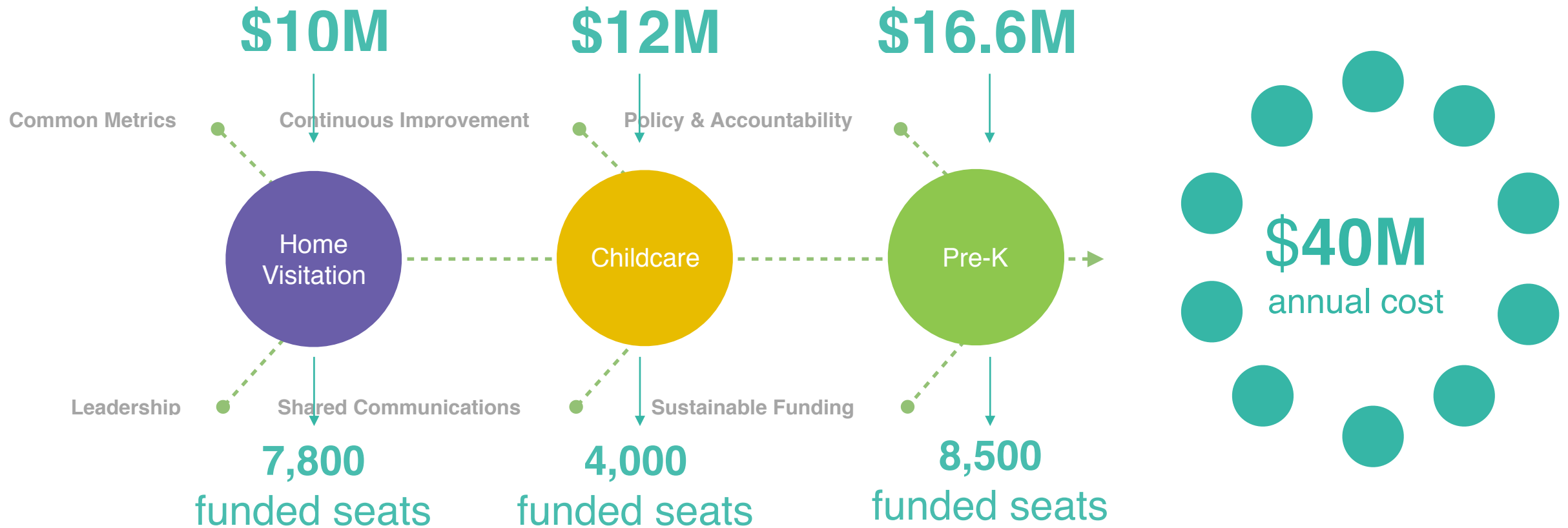


* The supportive backbone, comprised of Seeding Success, Porter Leath, Early Success Coalition, and SCS Division of Early Learning and Head Start will guide and evaluate the system to ensure effectiveness, quality, and efficiency.

New Financing



\$40M annually will serve 20,350 children and their families annually, which would support the majority of at-risk children ages 0-5 in Shelby County.

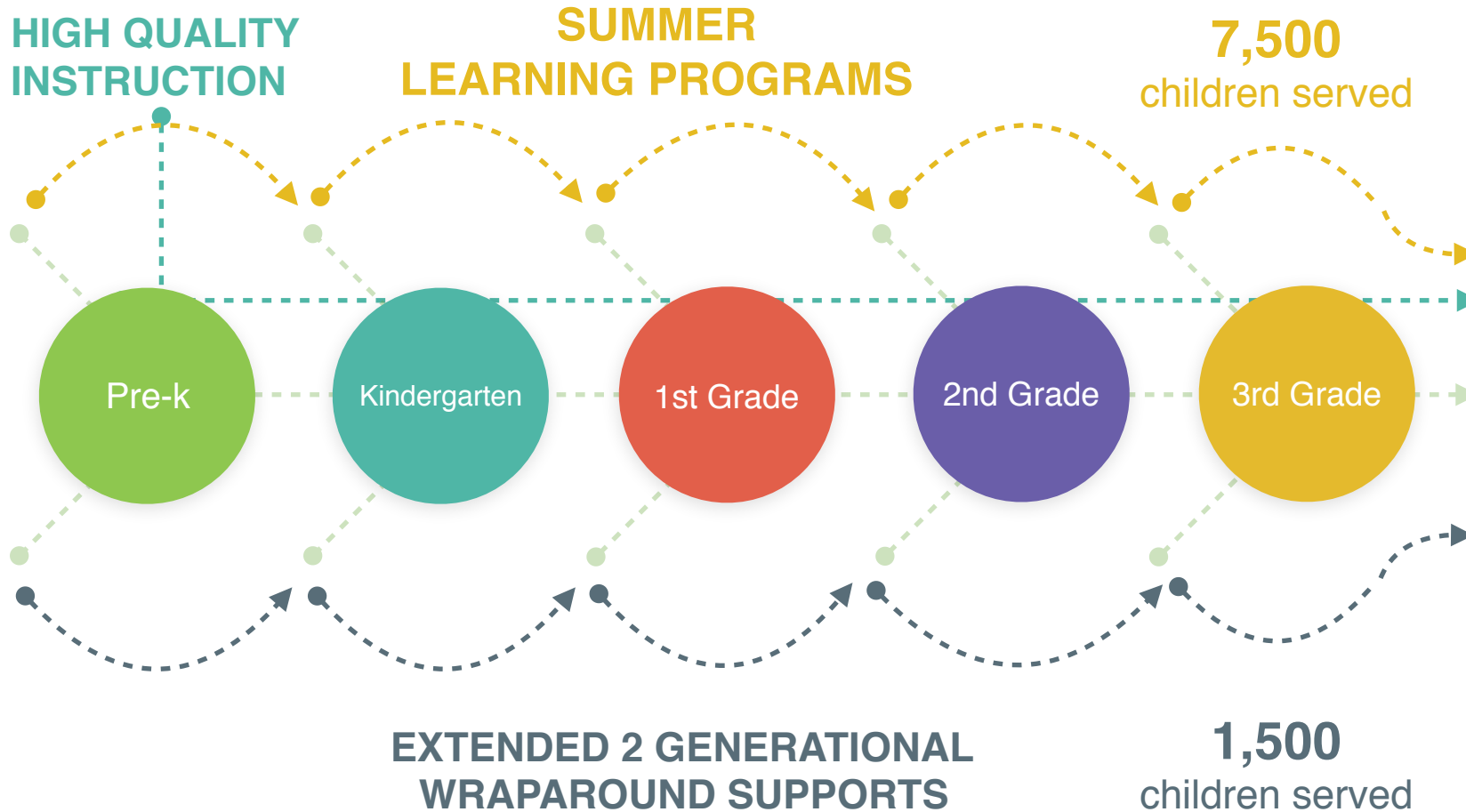


* The supportive backbone, comprised of Seeding Success, Porter Leath, Early Success Coalition, and SCS Division of Early Learning and Head Start will guide and evaluate the system to ensure effectiveness, quality, and efficiency.

Aligning Existing Resources K-3rd Grade



In partnership with local school districts, First Eight Memphis will align existing resources to pilot expansion programs that serve 9,000 children and families through summer learning opportunities and 2 generational wraparound support services.



Aligning investments to expand programming through 3rd grade will:

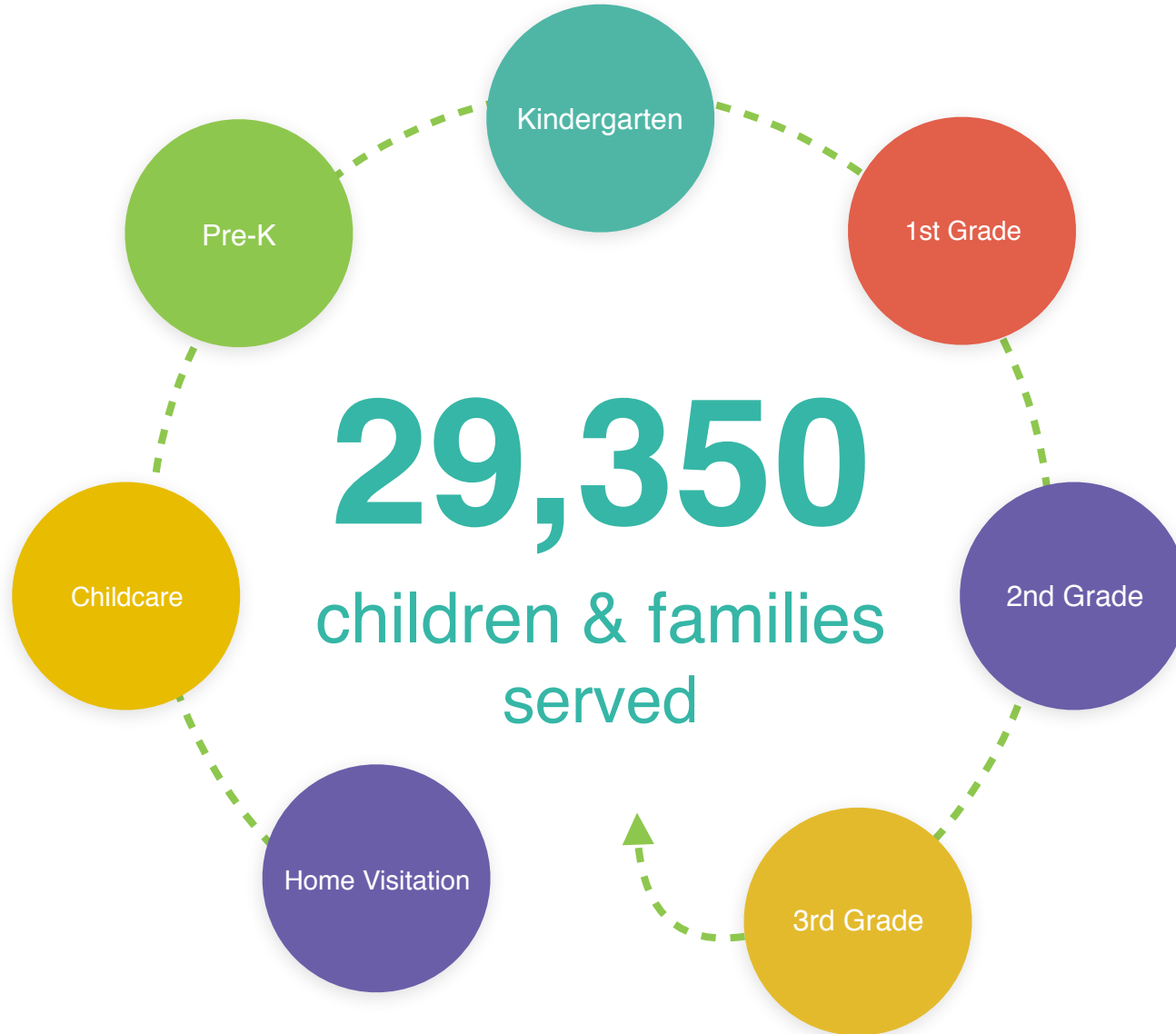
- Mitigate summer learning loss
- Expand learning opportunities
- Stabilize families through additional 2 generational supports
- Align curriculum and instruction to meet student needs
- Support teachers with professional development on best instructional practices for effective literacy and social emotional learning

* The programs will annually require \$6M in existing resources to operationalize the pilots. First Eight will continue to work with the school districts to explore additional opportunities to scale the work to meet the full needs of Shelby County's families.

Total Impact



First Eight is driven by an equity-based approach in improving outcomes for Shelby County's families. Strategies and goals to activate authentic community-level authority are a critical component of the system's design.



THE APPROACH

- Address disparities in access to high quality early childhood education for marginalized communities
- Fund the highest quality programs in the most underserved communities
- Invest in the capacity of existing neighborhood providers to serve their communities
- Prioritize resources to families and children who need them the most
- Mandate community voice and experience in the grant making process and in accountability for outcomes
- Track data of children served in order to ensure public accountability to equitable outcomes

Broader Social Return on Investment



Per successful implementation, children and families will accrue the long-term benefits of ECE programs and a generation of children will be equipped to succeed. **Improved economic mobility** and **poverty alleviation** will manifest in the following ways:



*A study conducted by Dr. James Heckman articulates that a high quality integrated ECE system has an expected ROI of 13:1 annually



“...Research shows the cost-effectiveness of early childhood development in helping prevent achievement gaps, boost school achievement, promote better health outcomes, improve our workforce, increase productivity and reduce the need for costly social spending.”

- Dr. James Heckman



Questions?





**FIRST
EIGHT
MEMPHIS.org**

Building our city's future from the start