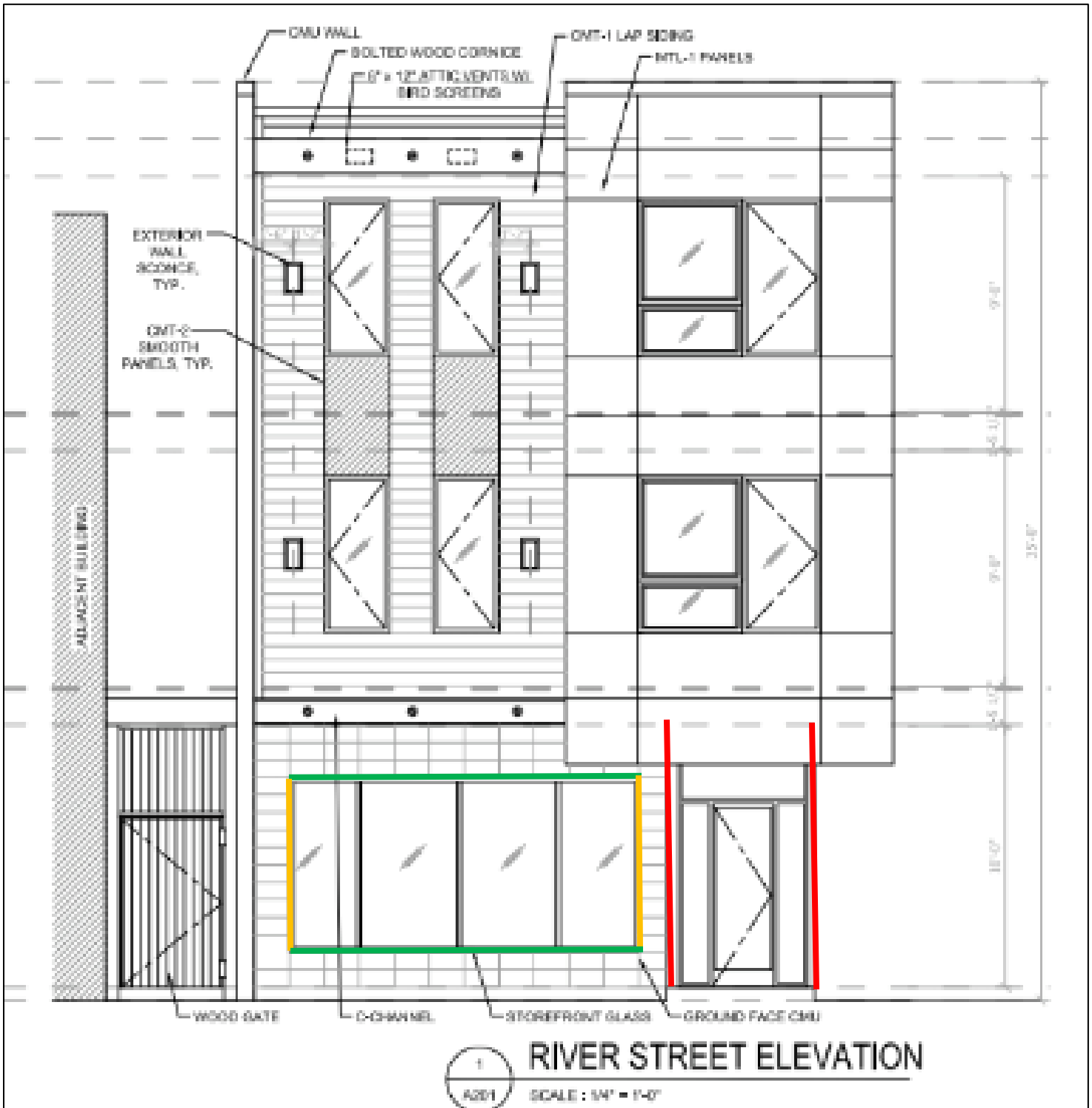
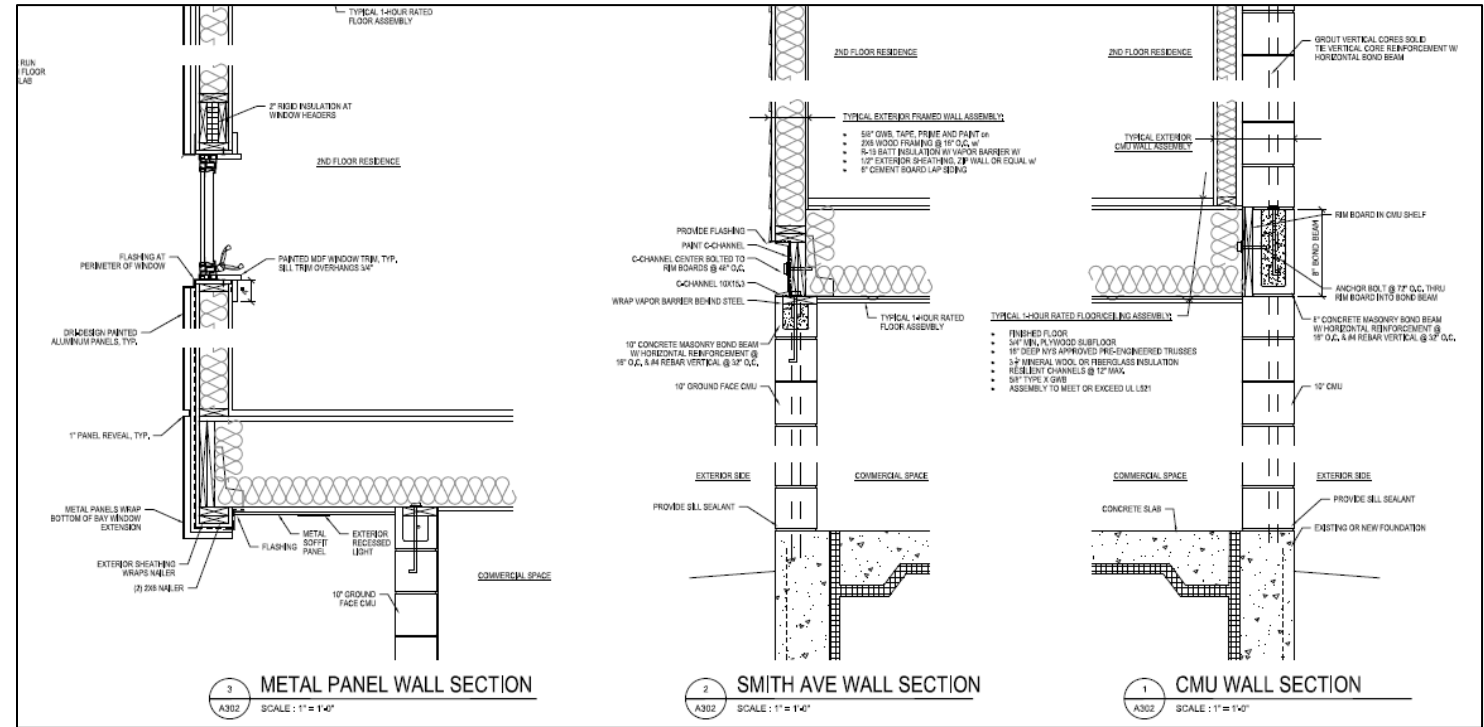
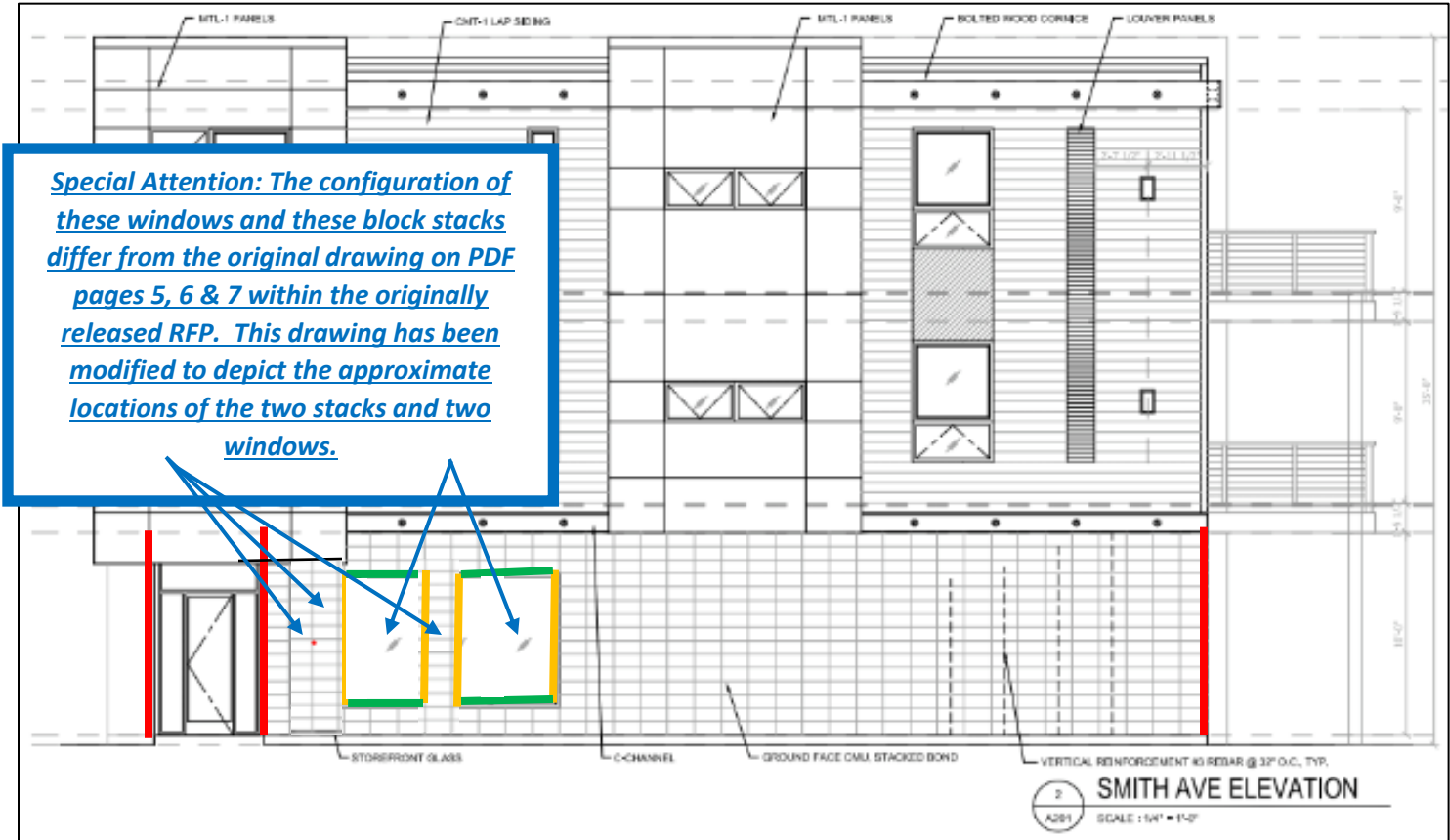


ADDENDUM #1 – ISSUED SEPTEMBER 03, 2021

The drawings below replace PDF pages 6 & 7 included within the originally released RFP. This addendum is intended to provide further clarity in regard to the types of masonry units to be used and their locations. This addendum also provides an estimated number of masonry units per unit type.

THIS ADDENDUM DOES NOT CHANGE THE ORIGINAL WORK REQUESTED IN THE ORIGINAL RFP

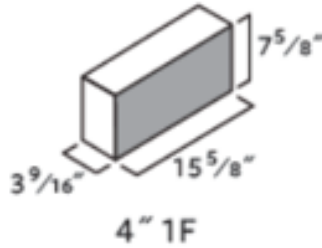




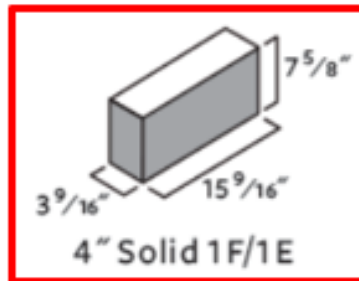
VENEER MASONRY UNIT TYPES

(Color of box relates to lines depicted on elevation drawings – Unit 1F not colored)

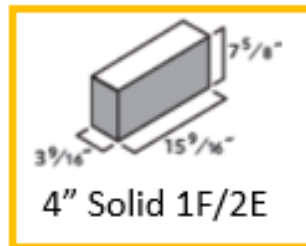
Solid Block Unit 1F - Polished on one face - $3\frac{9}{16}'' \times 15\frac{5}{8}'' \times 7\frac{5}{8}''$:



Corner Block Unit 1F/1E – Polished on one face and one end - $3\frac{9}{16}'' \times 15\frac{9}{16}'' \times 7\frac{5}{8}''$:

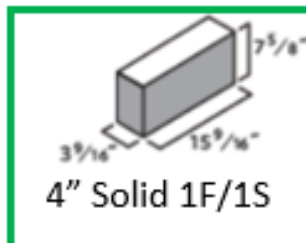


Side Casing Block Unit 1F/2E – Polished on one face and two ends - $3\frac{9}{16}'' \times 15\frac{9}{16}'' \times 7\frac{5}{8}''$:



↓

Top/Bottom Casing Block Unit 1F/1S – Polished on one face and one 4'x8' side - $3\frac{9}{16}'' \times 15\frac{9}{16}'' \times 7\frac{5}{8}''$:



ESTIMATED MASONRY UNITS COUNT BY UNIT TYPE

		CORNER BLOCK	SIDE CASING BLOCK	TOP/BOTTOM CASING BLOCK
	FULL BLOCK	One End Polished	Two 4"x8" Ends Polished	One 4"x16" side polished
	1F	1F/1E	1F/2E	1F/1S
REAR:				
Full block that needs to be replaced: 12 rows X 7 columns	84			
North door jamb needing replacement (assume 1 block for each row: 11 block)			11	
North Door missing above top of door (assumes half of regular full blocks can be used over south door)			3	3
South door missing block over top of door:				3
South door full block missing on left side	25			
South door full block missing on right side	12			
NE corner - 12 block with one end polished and face		12		
REAR SUBTOTAL	121	12	14	6
NORTH WALL:				
Replacements needed: 25 columns X 12 rows	300			
Replacements needed above windows - full block	7			7
Replacement around sides & seperating stack between two windows		22	11	
Bottom missing below windows				7
NORTH WALL SUBTOTALS	307	22	11	14
ENTRY DOOR:				
Short block between full and chamford blocks	12			
Stacks of full block on each side of entry - polished end		24	0	0
ENTRY DOOR SUBTOTALS	12	24	0	0
FRONT WALL:				
Replace regular existing full block	49			
Replace full block on sides of window		18		
Replace row of full block below window				8
Missing over window	9			7
Missing above 2 stacks furthest to right side	2	1		
FRONT WALL SUBTOTALS	60	19	0	15
TOTAL BLOCK COUNTED:	500	77	25	35
5% Waste Added	25	3.85	1.25	1.75
TOTAL BLOCK TO ORDER	525	68	27	37