



Physicians Products Inc.
A Physician's Management Company



PRP KIT
INSTRUCTIONS

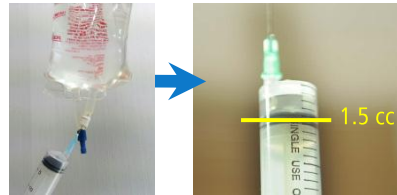
1. Preparation

① Supplies



- YCELLBIO Tube
- Blood (13.5cc)
- Anticoagulant (1.5cc)
- 20cc Syringe (1ea)
- 5cc Syringe (1ea)
- 3cc Syringe (1ea)
- 21G Needle or Butterfly
- 18G 1 1/2 Needle (2ea)
- Alcohol-soaked cotton
- Forceps

② Syringe coating with anticoagulant



Draw 1.5cc anticoagulant in 20cc syringe and coat inside walls of the syringe.

2. Blood Gathering

① Gather Blood



- Draw 15cc blood.

② Blood Mixing



- Slowly swing the blood to mix, drawing Mobius Strip (∞) for about 15 sec.

3. Collecting Blood into tube

① Check the tube

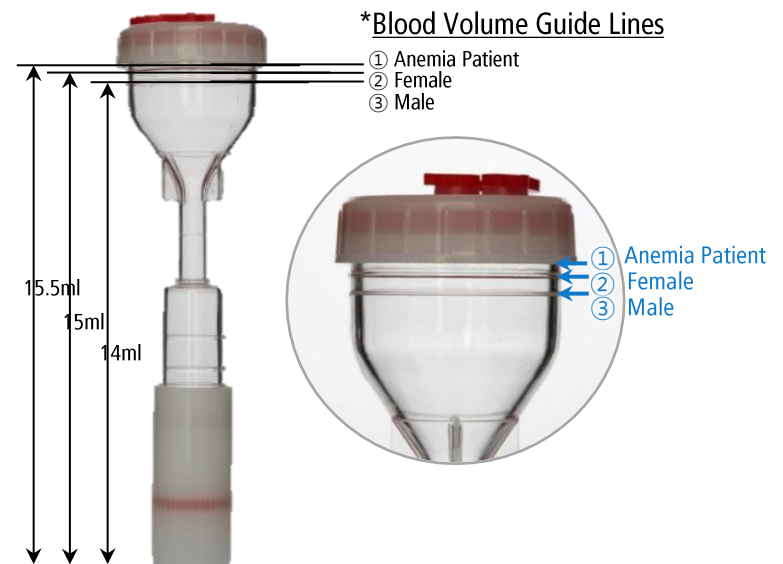
- Check the tube if there is any problem.
- Change the needle to 18G.

② Fill up the tube

- Put the gathered blood into a tube (keeping a slope of 45°).
- Adjust blood level up to *Guide Lines according to a patient's condition.

③ Close the cork

- Close the cork with forceps.



4. Centrifugation

Angle Type



RPM : 3400~3600
Time : 4 minutes

RCF : 1888*g

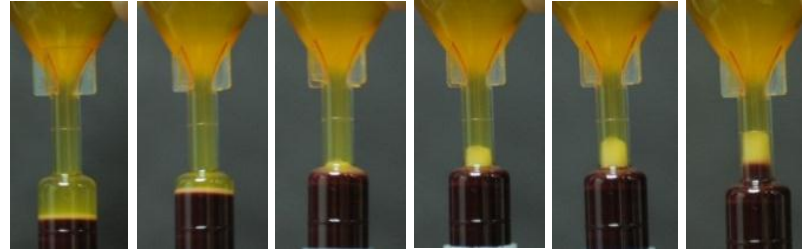
Swing Type



RPM : 3200
Time : 4 Minutes

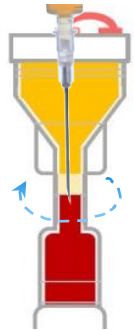


5. PRP Extraction



Elevate buffy coat up to the slim neck

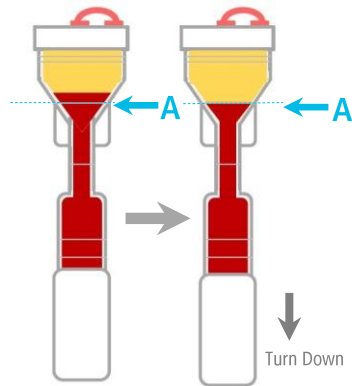
- 1) Open the cap with a piece of alcohol-soaked cotton.
- 2) Adjust RBC level to meet the edge of the needle.
- 3) Slowly spin the needle while extracting PRP (using Tornado System).
- 4) Extract 1.5cc~2cc PRP into 3cc syringe using
- 5) Collect 5cc of PPP into 5cc syringe.



※ When is the 2nd centrifugation needed?

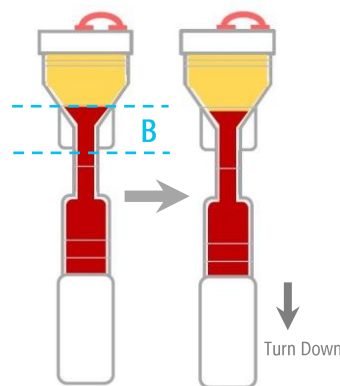
1 Elevated Hematocrit

If RBCs remain above the slim neck after the 1st spin, turn down the control grip to Line A and take another 4 min spin with the same speed.



2 Elevated Hematocrit

If RBCs remain in the range B, lower RBCs a little by one or half down turn of the control grip.



3 Depressed Hematocrit

If RBCs are depressed lower than the slim neck after the 1st spin, elevate RBCs up to the signed line that is right below line C, and take another 2 min spin with 2200~2400 RPM.

