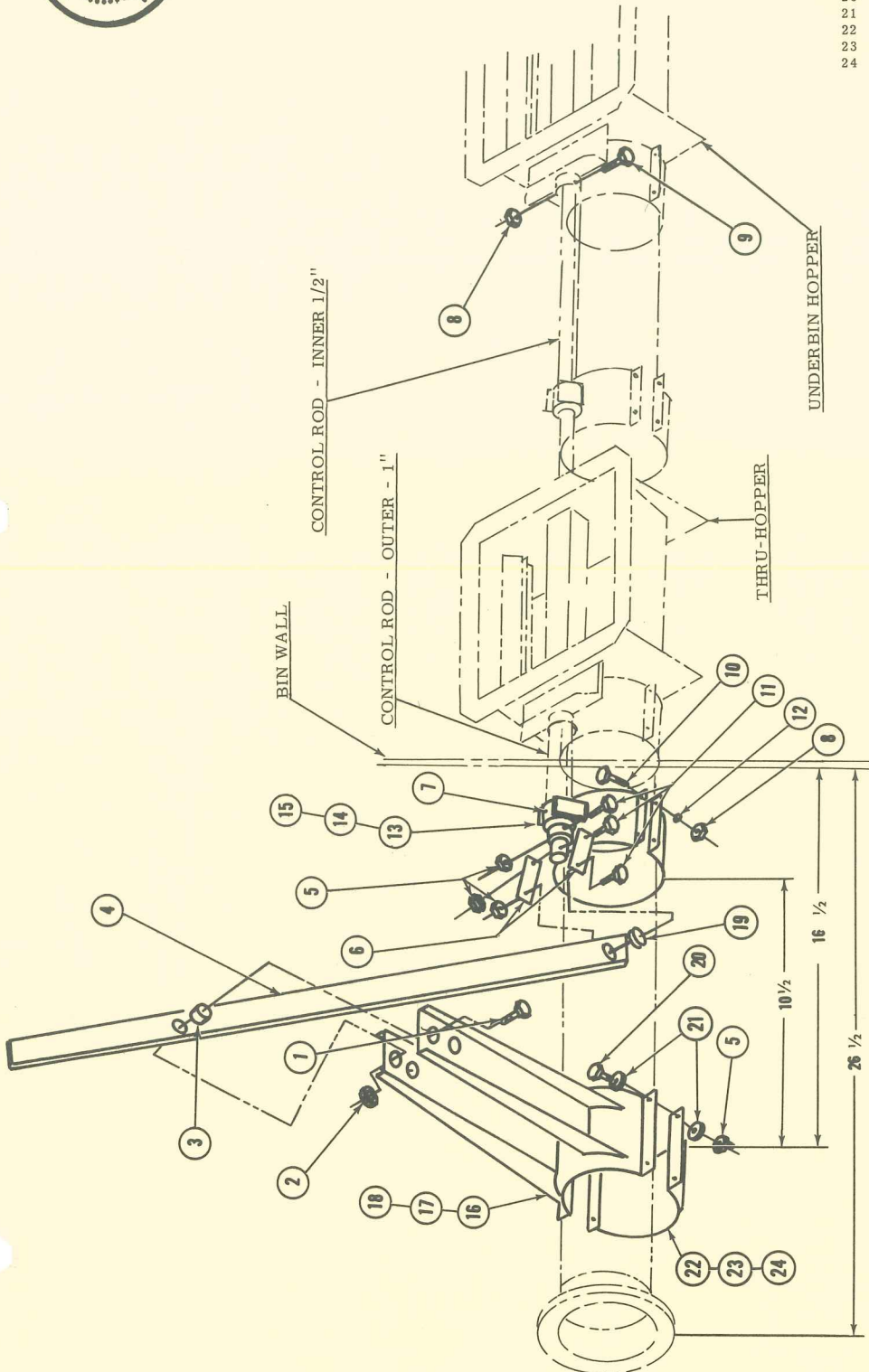


PARTS SHEET
For
SLIDE GATE CONTROL ASSEMBLY

MODELS SCG666T SCG766T SCG868T



KEY NO.	PART NO.	DESCRIPTION
1		CAP SCREW, 1/2-13NC x 3 3/4"
2		LOCKNUT, 1/2-13NC
3	20969	SPACER - PIVOT (2 REQ.)
4	20956	LEVER
5		LOCKNUT, 3/8-16NC
6	19719	LEVER LINK (2 REQ.)
7	15284	ZERK FITTING
8		LOCKNUT, 5/16-18NC
9		CAP SCREW, 5/16-18NC x 1 3/4"
10		CAP SCREW, 5/16-18NC x 1"
11		CAP SCREW, 3/8-16NC x 2"
12		FLAT WASHER, 5/16"
13	A23109	GUIDE BEARING, 6"
14	A23107	GUIDE BEARING, 7"
15	A23104	GUIDE BEARING, 8"
16	A20961	PIVOT, 6"
17	A20967	PIVOT, 7"
18	A21810	PIVOT, 8"
19	20970	SPACER - LEVER (2 REQ.)
20		CAP SCREW, 3/8-16NC x 1"
21		FLAT WASHER, 3/8"
22	19880	CLAMP HALF, 6"
23	19484	CLAMP HALF, 7"
24	20663	CLAMP HALF, 8"



- Control Rod Guide to be centered between center sump and Thru-Hopper.
- Control Rods (furnished by customer) are 1/2" and 1" Pipe. To determine length of 1/2" Control Rod, place Guide Bearing as shown and close Slide Gate of center sump. Rod should then protrude 4" beyond Bearing. Hole in Bearing end of Control Rod is drilled 1/2" off end of Pipe using a 3/8" drill. Drill through hole in sleeve on Slide Gate of center sump, using a 5/16" drill. The length of the 1" Pipe is determined with the Slide Gate of the Thru-Hopper closed. Slide the 1" Pipe over the installed 1/2" Pipe and thread it into the coupling on the Slide Gate of the Thru-Hopper. Cut the 1" Pipe so that 2" of the 1/2" Pipe is exposed. Drill a 3/8" hole 1/2" off the end of the 1" Pipe and through both Pipes.
- Assemble the Lever and Linkage and attach the Linkage to the 1/2" Pipe.
- The 1/2" Pipe operates the center sump Slide Gate and the 1" Pipe operates the Thru-Hopper Slide Gate. To operate both of the Slide Gates together, the 3/8"-16NC x 2 Bolt is inserted into the drilled hole next to the Bearing and through both Pipes locking them together. To operate just the center sump remove the 3/8" Bolt and only the 1/2" Pipe is moved. Always Be Sure both Gates are closed when the Bolt is inserted or removed.