

## INSTALLATION OF CYLINDER LOCK CHANNELS ON CARDINAL SCISSOR LIFT



1. With the auger raised to the desired position, measure the distance between the lower cylinder mount and the face of the hydraulic cylinder body.

2. Mark the channels at the desired length and make the cut.

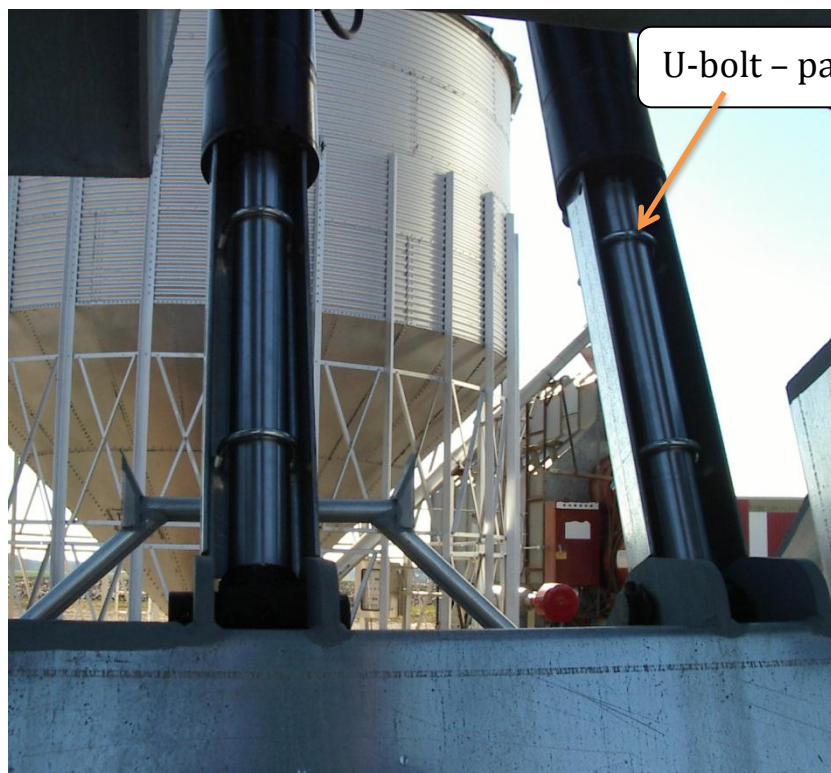


3. Raise the auger slightly to allow room to install the lock channels as shown below. Secure with U-bolts and nuts.

Cylinder Lock Channel  
part # 32649



Whiznut - part # 31174



U-bolt - part # 32650

Part # 32648 Cylinder Lock Kit includes:

(qty 2) Cylinder Lock Channel – part # 32649

(qty 4) U-bolt 3/8-16 x 2 ID x 3" length – part # 32650

(qty 8) Nut, 3/8-16 Hex Flanged Whiznut – part # 31174