

Bucceri Snowfall



Simple to Operate

Real Snowflakes

Any Temperature

Patents Pending

The **Bucceri Snowfall** is a falling snow machine that makes falling snow in any temperature. The Bucceri Snowfall allows the creation of real snowflakes at any location.

This new falling snow machine is simple to operate and will blow falling snow over an area covering 20 feet by 10 feet. The snowflakes are produced from water only.

Features

•Control panel

Adjustments of the output- A PLC and a Variable Speed Drives allow you to control the output and adjust it to your needs.

•Plug and Play

Just connect to water and plug into a 20amp 3-phase outlet and you are ready to create your own falling snow.

SUPER FINE FALLING SNOW ANYWHERE



How Does it work?

The Patent Pending **Bucceri Snowfall** makes snow directly from water with the ability to operate and produce falling snow within minutes of activation.

The **Bucceri Snowfall PLUS** uses refrigeration equipment to produce small particles of ice which are harvested into snowflakes of various sizes as they are blown from the machine. The size of the snowflakes and their ability to retain their properties in warmer temperatures can be controlled by dialing in and adjusting the speed of the snow making fan unit.

Safety

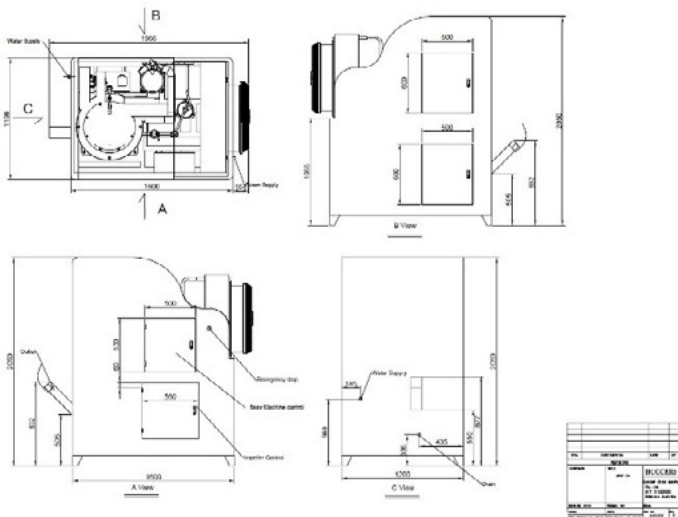
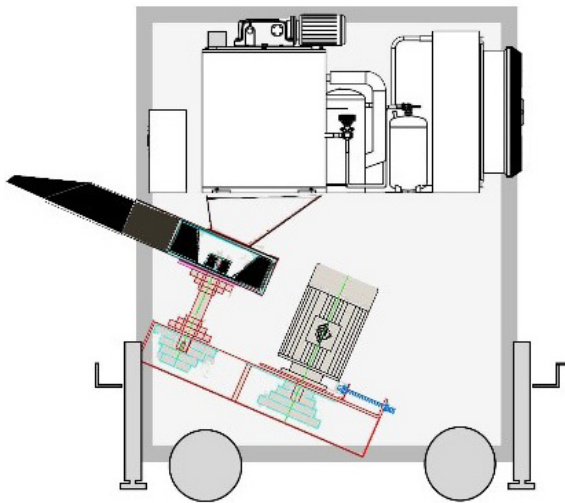
The **Bucceri Snowfall** complies with all current safety requirements for a machine of its type.

Service

The strong partnership between Australian Manufacturer Bucceri Snow Making Pty Ltd, and Global Technology Integrators provides quick and easy service guaranteeing the high quality of all products.

Technical data

Procedure	Falling snow generator
Power requirement Including 1 Module with 2 ice Generating Units	Total Load Control Panel 20 Amps plus E and N Consisting of: Fan Blower 3 Amps Ice Generation 15 Amps
Voltage	400V/60Hz 3phase
Warm up time	3 minutes
Power Consumption at design output of 20-minute cycles	5kw/hour
Snow Height Range	12 feet
Snow area Coverage	Up to 200 square feet
Output projection	79 Snowflakes per square foot per minute
Design Operation	ON to Start OFF to finish
Electrical Controls	Omron PLC and Omron VSD drive
Water Requirements	21 gallons per hour 1/3 gallons per minute
Overheating protection	Heater block/Thermostat Pump/Thermal switch



Patents Pending Worldwide

Technical data Ice Generating Module

Component Name	Ice Generator
Compressor	Copeland
Condenser	Eden
Expansion valves	Danfoss
Evaporator	Bucceri
Oil separator	Emerson
Accumulator	D&F
Water Pump	US Brand*
Reducer and motor	US Brand*
Electrical parts	Schneider Brand
Ice Generating Units	2
Ice daily productive capacity per Unit	4400 Pounds/day
Standard ambient temperature	87 degrees Fahrenheit
Standard inlet water temperature	65 degrees Fahrenheit
Evaporating temp	-5 degrees Fahrenheit
Condensing temp	100 degrees Fahrenheit
Ice temperature	20 degrees Fahrenheit
Power supply	440-460V/60HZ/3Phase
Refrigerant	R404A
Refrigerant capacity	13.3kw
Installed Power	8.5kw
Dimensions per Unit	5 feet x 4 feet x 6 feet
Weight per Unit	1000 pounds

Technical data Fan Impeller Snow Fall Generator

Component Name	Bucceri B4
Impeller Brand	Bucceri High Speed Patented Stainless Steel Construction
Motor	ABB 2Kw 3 Phase
Coupling	Direct
Bearing	Bucceri
Output	Up to 0.2 Cubic Yards Per Hour

Global Technology Integrators, LLC.

☎ 407-401-8919

✉ tony.oxford@gtintegrators.com

📍 3251 Progress Drive
Orlando, FL 32826