



HOME DESIGN BY

John Paul

1858 SHOWN IN **TIMBER**

ASPEN

AVAILABLE SIZES

1715 - 66'x74'
 1858 - 66'x77'
 2919 - 66'x77'



2 (+ study)
 2 (+ study)
 4 (+ study)

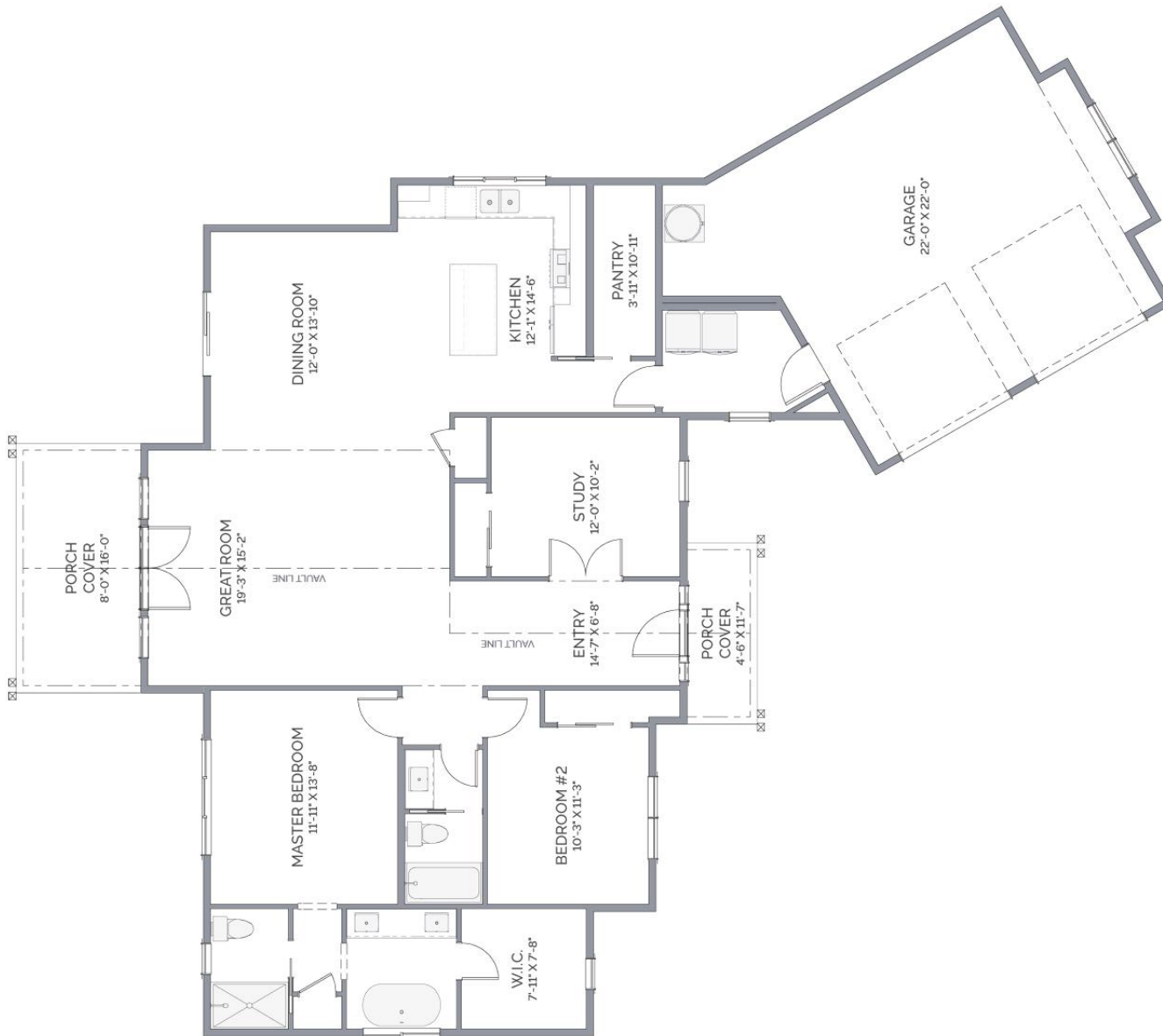
2
 2
 3

2
 2
 2

AVAILABLE ELEVATION STYLES

TIMBER

IHV
THE HIGHLANDS
 HAWKEYE VILLAGE



REAR ELEVATION
Shown in Timber

You enter this home through a spacious entry with high vaulted ceilings that continue into the living room and rear porch cover. With options to build a 1715, 1858 or 2919 square foot home, the Aspen is laid out efficiently and makes good use of any sized lot. The large master bathroom features his and hers sinks, and a large walk-in closet. The kitchen opens into the dining space and has views of your property's side yard. The Aspen offers you the option for a three-car garage, providing ample space for storage and hobbies.

POPULAR OPTIONS

ASK OFFICE FOR CURRENT PRICING

- ▶ Luxury Tiled Shower
- ▶ Glass Doors into Study
- ▶ Faux Beams
- ▶ 3rd Bedroom with Closet in Study
- ▶ Outdoor Kitchen
- ▶ 3rd Bay Garage



v1.0

approx square feet of living area

ASPEN 66'x74' **1715**



REAR ELEVATION
Shown in Timber

You enter this home through a spacious entry with high vaulted ceilings that continue into the living room and rear porch cover. With options to build a 1715, 1858 or 2919 square foot home, the Aspen is laid out efficiently and makes good use of any sized lot. The large master bathroom features his and hers sinks, and a large walk-in closet. The kitchen opens into the dining space and has views of your property's side yard. The Aspen offers you the option for a three-car garage, providing ample space for storage and hobbies.

POPULAR OPTIONS

ASK OFFICE FOR CURRENT PRICING

- ▶ Luxury Tiled Shower
- ▶ Glass Doors into Study
- ▶ Faux Beams
- ▶ 3rd Bedroom with Closet in Study
- ▶ Outdoor Kitchen
- ▶ 3rd Bay Garage



v1.0

approx square feet of living area

ASPEN 1858
66'x77'

Deck not included in the base price of home.



REAR ELEVATION
Shown in Timber

You enter this home through a spacious entry with high vaulted ceilings that continue into the living room and rear porch cover. With options to build a 1715, 1858 or 2919 square foot home, the Aspen is laid out efficiently and makes good use of any sized lot. The large master bathroom features his and hers sinks, and a large walk-in closet. The kitchen opens into the dining space and has views of your property's side yard. The Aspen offers you the option for a three-car garage, providing ample space for storage and hobbies.

BASEMENT FLOOR
1093 SQ. FT.



MAIN FLOOR
1826 SQ. FT.

POPULAR OPTIONS

ASK OFFICE FOR CURRENT PRICING

- ▶ Luxury Tiled Shower
- ▶ Glass Doors into Study
- ▶ Faux Beams
- ▶ 5th Bedroom with Closet in Study
- ▶ Outdoor Kitchen
- ▶ 3rd Bay Garage



1/10

approx square feet of living area

ASPEN
66'x77' **2919**