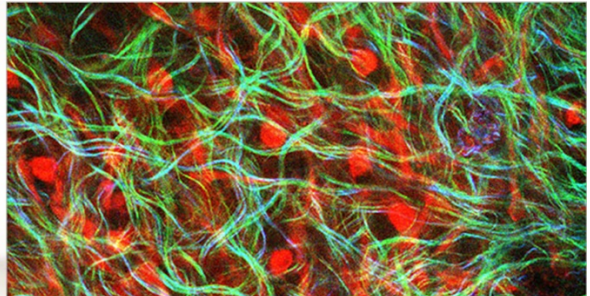
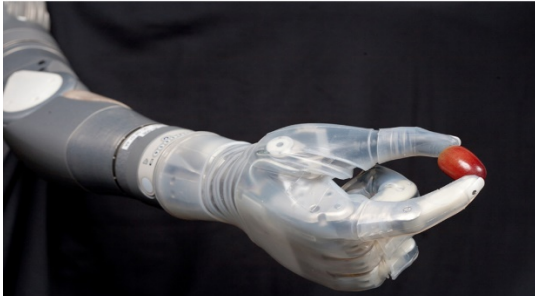




## Register Now for Introduce a Girl to Engineering Day!



### IMPROVING LIFE WITH BIOMEDICAL ENGINEERING!

**Biomedical engineering shapes the future by applying engineering principles and design ideas to the fields of medicine and biology. From designing prosthetics to regenerating tissues, biomedical engineering covers a wide range of ways to help people.**

For our 14th Annual *Introduce a Girl to Engineering Day*, Nitsch Engineering is excited to talk about **Biomedical Engineering!** We're partnering with Tufts University and Nutter McClennen & Fish LLP to showcase some of the ways in which engineering is used to help people live better lives.

**When:** Friday, June 5, 2015, from 8:30 AM to 2:00 PM

**Who:** Girls from 6th to 12th grade. An adult chaperone is welcome to accompany each girl.

**Where:** [Nutter McClennen & Fish LLP's office in Boston's Seaport District](#)

Attendance is limited, so please register as soon as you know you can make it. If the event fills up, you will be able to sign up to be on the wait list. All registrations must be received by Wednesday, May 27th.

**For more information and to register, [please click here.](#)**

If you have any questions, please feel free to contact this year's event coordinators:

Brittney Veeck, EIT, LEED Green Associate, at [bveeck@nitscheng.com](mailto:bveeck@nitscheng.com), or

Anna Luciano at [aluciano@nitscheng.com](mailto:aluciano@nitscheng.com).

We hope to see you in June!

Civil Engineering • Transportation Engineering • Structural Engineering  
Land Surveying • Green Infrastructure • Planning • GIS  
Boston and Worcester, MA • [www.nitscheng.com](http://www.nitscheng.com) • [info@nitscheng.com](mailto:info@nitscheng.com)

