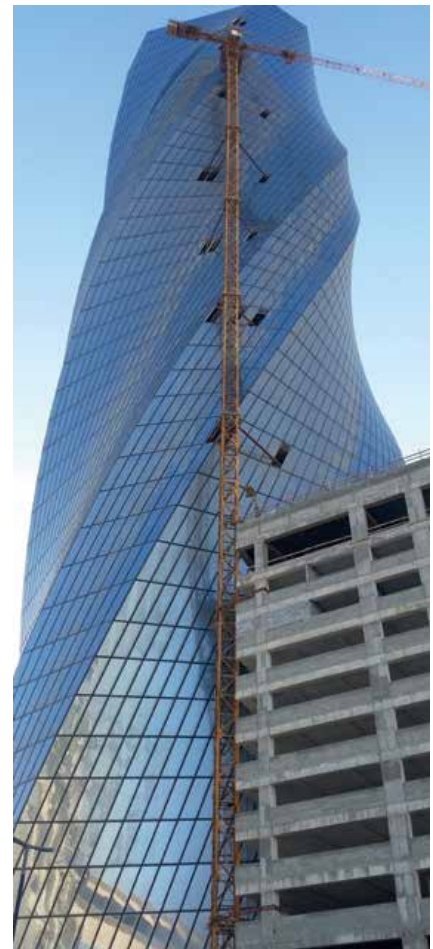


# POLOPLAST PIPING SYSTEMS

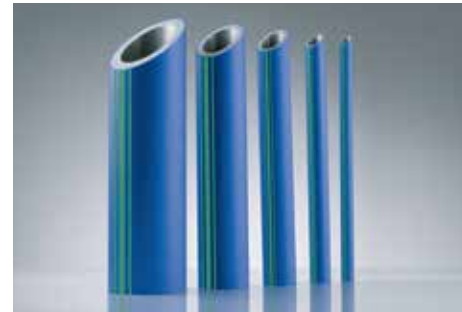
## United Tower Manama, Bahrain

Product: Approx. 130,000 ft of POLOPLAST pipe and fittings  
Volume: 2 ft x 40 ft container  
Construction period: 2011–2016  
Floors: 14

This dramatic, twisting tower was developed in Bahrain and houses a five-star hotel from the Wyndham Hotel Group. The 50-story-tall United Tower is located in Bahrain Bay and includes business, retail, and residential areas, catering to both business and leisure travellers.



# POLOPLAST PIPING SYSTEMS



## USE ANYWHERE IN NEW BUILDINGS, RENOVATIONS, AND REPAIR PROJECTS

POLOPLAST manufactures a premium solution for supplying the world's most precious resources. For both hot and cold supply, our systems are naturally antimicrobial, corrosion-free, and structurally robust. The rugged, five-layer pipes offer increased capabilities when it comes to pressure, temperature, and thermal expansion. Best of all, the light weight of the system components makes it easy, safe, and efficient to install.

**10  
YEAR  
WARRANTY**

## ADVANTAGES OF POLOPLAST

- Increased durability thanks to high-quality materials and manufacturing
- Heat-fused joints provide operational reliability
- Meets rigorous hygienic standards for purity
- High abrasion resistance means immaculate hygiene and safety
- Resistant to thermal expansion, meaning simple design and installation
- Highly chemically inert, which ensures long service life
- Smooth, non-porous I.D. of pipes prevent deposits and incrustation
- PP-R muffles the ambient noise generated by the flow of water that is notable with metal pipes
- The system's fusion-based joining process and low weight saves time and money when it is being installed
- The extensive range of different pipes and fittings provide a solution for all types of applications

**POLOPLAST** America, Inc.  
15415 International Plaza Drive, Suite 200  
Houston, TX 77032  
T (346) 374.7100

support@poloplast.us  
[WWW.POLOPLAST.US](http://WWW.POLOPLAST.US)

**PURE  
PROGRESS / poloplast**