

Preemie Pouch® 1 piece system – Instructions for Use



Put gauze over stoma to absorb any output



Without actually touching the stoma measure opening slightly larger than stoma



Transfer measurement to paper side of barrier/wafer



Insert finger into pouch



Pull pouch away from the barrier. Fold barrier to make it easier to cut



Use blunt curved scissors to cut hole in barrier

Make hole large enough so that barrier does not touch stoma



Carefully clean around stoma with lukewarm water



Pat skin dry and leave gauze in place to absorb any output



Warm the barrier for 2 minutes between hands before applying. **USE NO OTHER HEAT SOURCE!**



Remove paper from barrier and get ready to remove gauze to attach pouch



Center hole over protruding stoma, avoiding to cover belly button or groin

Remove any wrinkles and air bubbles under barrier.



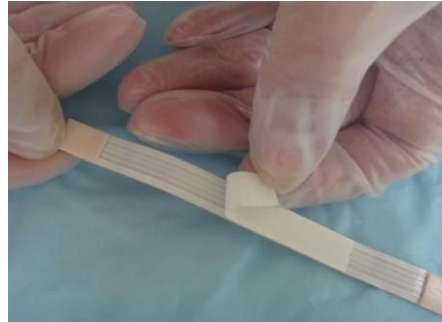
Hold barrier in place at least 2 minutes on all four sides with a light pressure. USE NO OTHER HEAT SOURCE. Failure to take your time will limit wear time



Remove air from pouch using two fingers



Cut pouch to desired length



Remove paper from soft tie to expose the adhesive strip



Attach soft tie at bottom of cut pouch, adhesive side facing you, and roll several times



Secure by folding the soft tie away from the baby



Let the pouch be inside or outside the pouch as per personal preference



Emptying a 1 or 2 piece pouch with 'regular' opening



Move stool to the bottom of pouch to empty



Clean the opening with gauze



Roll the soft tie several times around the pouch and secure as before (see above)