



# ENVIRONMENTALLY-SEALED TOGGLE SWITCHES

## T-BAR ENVIRONMENTALLY-SEALED MULTI-POLE SWITCHES

offers contact protection against corrosive atmospheres, splashing water, sand, dust, and salt spray. This T-Bar style has the identical switching, operations and reliability you will see in standard T-Bar Switchers because the same quality wafers and actuators are used throughout. The metal enclosures and contacts are protected with a premium epoxy seal as well as backfilled with inert gas for ground support or shipboard applications and in other various hostile environments. T-Bar Switches requiring continuous power, and pulse operated magnetic latching switches, can be environmentally sealed. Imagine 96 circuits protected in a space as small as 2-5/8" x 3-29/32" x 1-3/16". Our products are developed with longevity and practicality in mind. Don't forget our terminals are also designed to accept T-Bar Connectors.

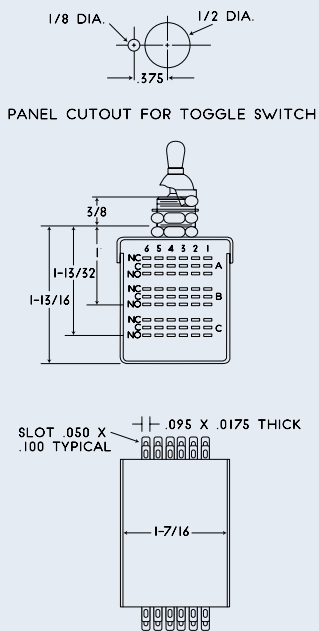
### SPECIFICATIONS:

- **SEAL TYPE:** Environmental
- **# OF POLES:** 12, 24, 36, 48, 52 and 60 pole configurations.
- **TYPE OF CONTACTS:** 800 Series (5 Amp) or 900 Series (1 Amp)
- **PROTECTED** against normal ambient dust conditions.
- **96 CIRCUITS ARE SWITCHED IN A SPACE** as small as 2-5/8" x 3-29/32" x 1-3/16".
- **SIMPLE CRIMP SNAP-IN CONTACTS** fit into single block connectors for easy wiring.

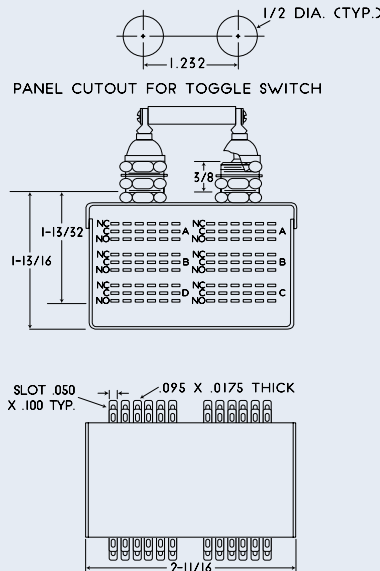


## TECHNICAL DIAGRAMS

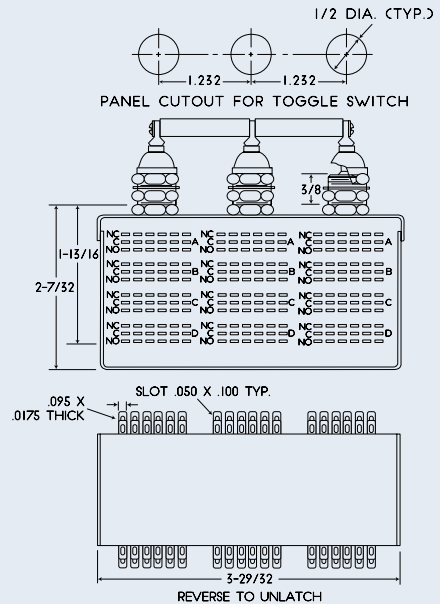
### SINGLE TOGGLE



### DOUBLE TOGGLE



### TRIPLE TOGGLE



## ORDER INFORMATION

We are a proven legacy-run product specialist partner ready to fulfill your sourcing requirements. Reach out to discuss how our professional team can be of service to you. Our full-service capabilities include design, development and manufacturing excellence for whatever your company procurement needs may be. Our customization options will put you ahead of the competition. Trust your company to 50+ years of providing quality, made in the U.S. products by our family-owned and operated business. Connect today at [info@occorp.com](mailto:info@occorp.com) or call (847) 742-3566.

**PART NO.:** 832-12C  
**T-BAR SERIES:** 832/932  
**NO. OF CONTACTS:** 12  
**CONTACT FORM:** C