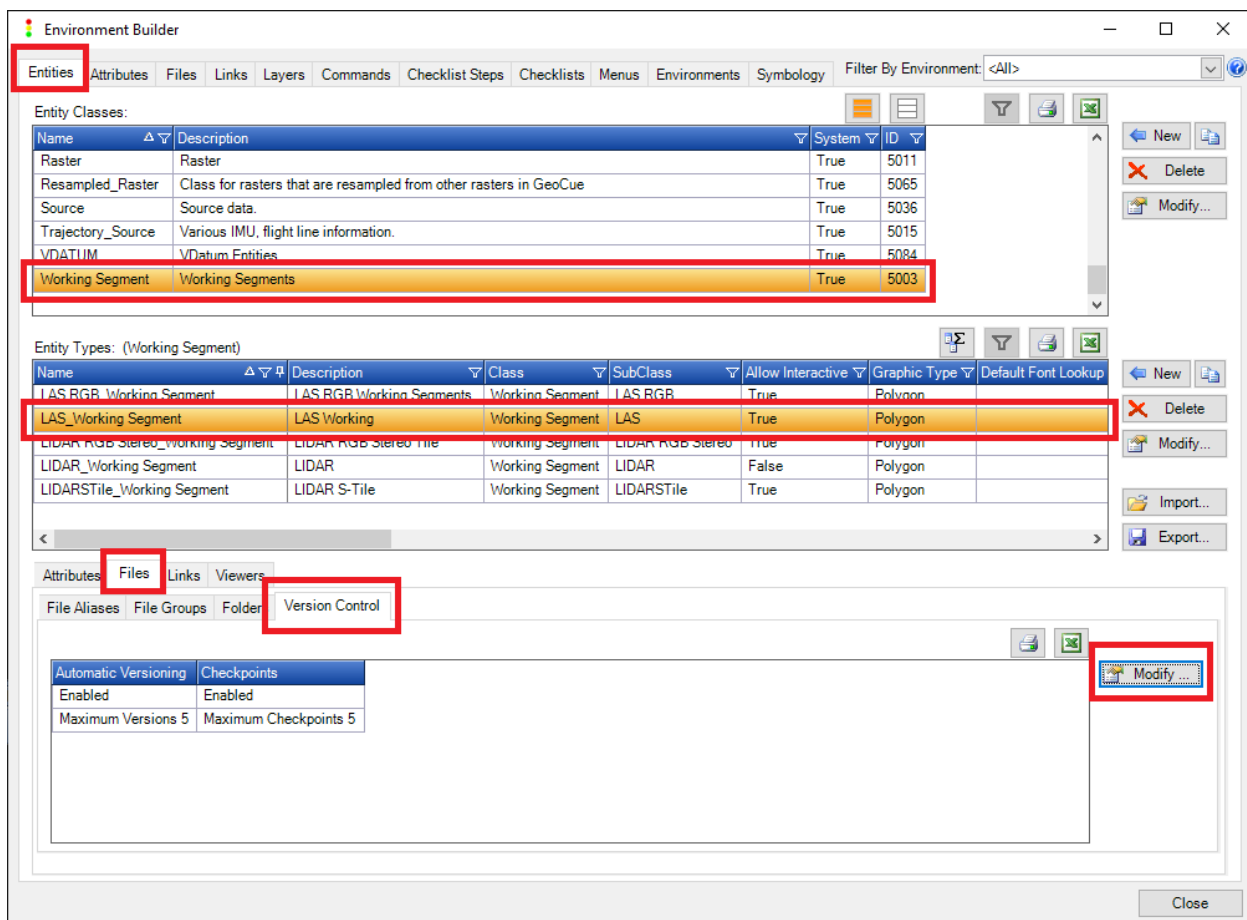


GeoCue Support
 September 26, 2019
 Revision 1.0

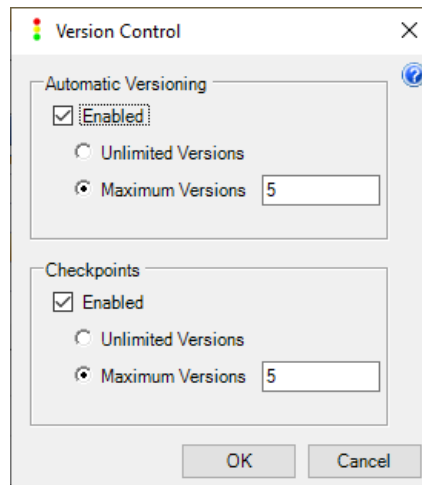
When processing in GeoCue, it is a good idea to setup automatic versioning and/or checkpoints. This allows the user to roll back to a previous state of processing if a mistake occurs or a change needs to be made. This document will review how to access and change settings related to this.

Configuration

- Most commonly, users are going to want to backup their working segments. We will review that process. *Note: versioning will be available for entities set in Environment Builder.* Open the “Environment Builder” – Setup->Administration->Environment Builder->Entities. Choose “Working Segment” in the Entity Classes field. Choose “LAS_Working_Segment” in Entity Types. Click on: Files tab -> Version Control tab -> “Modify” dialog on the far right:

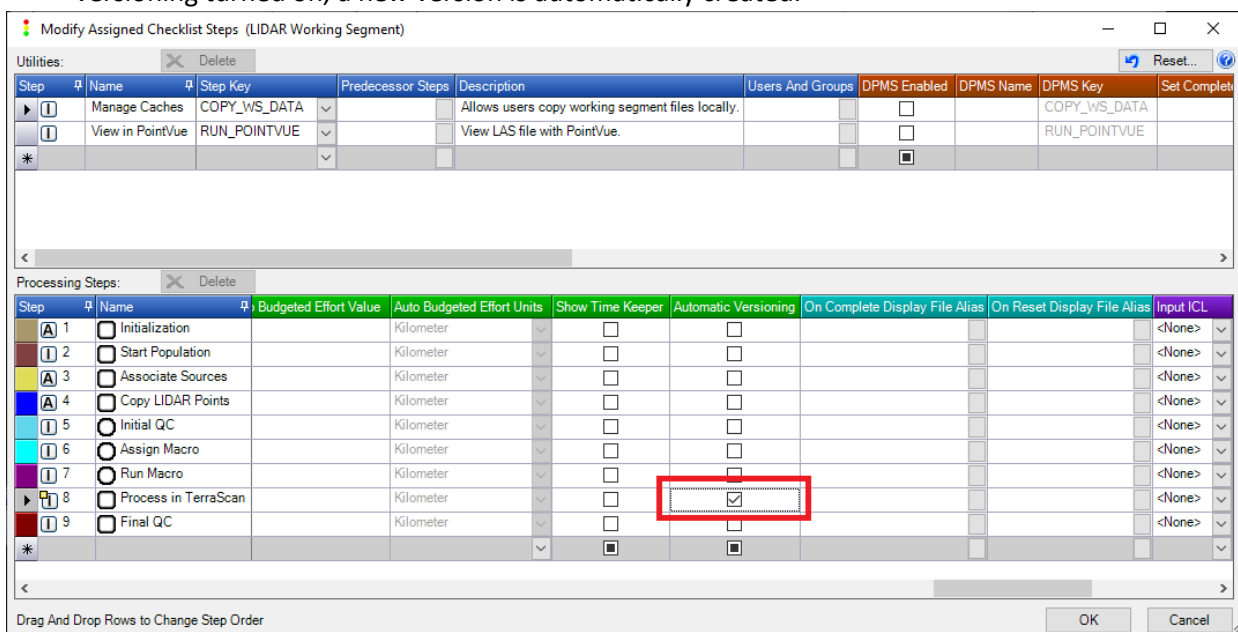


- Setup up version control: This gives you the flexibility to create automatic or manual checkpoints. It also lets you set how many versions can be created, if you need to control how much storage space is used in a project. If you limit the number of versions, once the max number is reached, the new versions/checkpoints will overwrite the oldest versions as you continue to create new versions. *Note: If Checkpoints are enabled, Automatic Versions must also be enabled to allow for restore of checkpoints.*



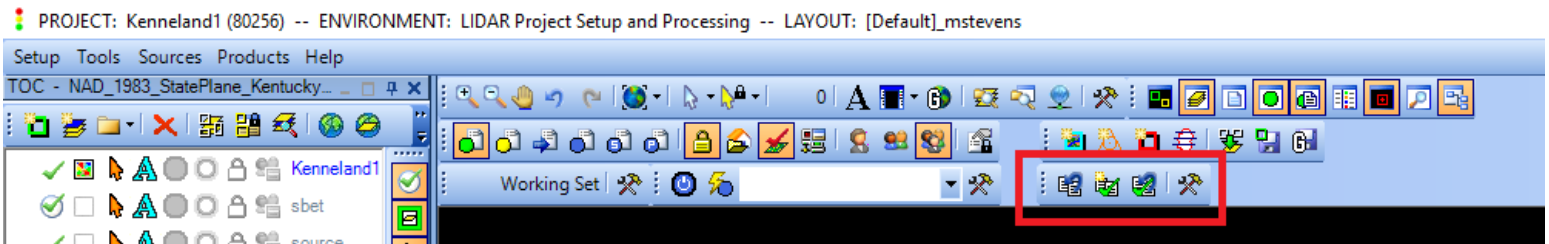
Automatic


- To set automatic versioning, you must enable this to happen at some point in your checklist. Go to “Checklists” in Environmental Builder, choose the checklist, and click “Modify Group” on the far right. Scroll to the right until you come to the “Automatic Versioning” option and check the step in the checklist that you would like to version. When a step is reached that has the auto versioning turned on, a new version is automatically created.

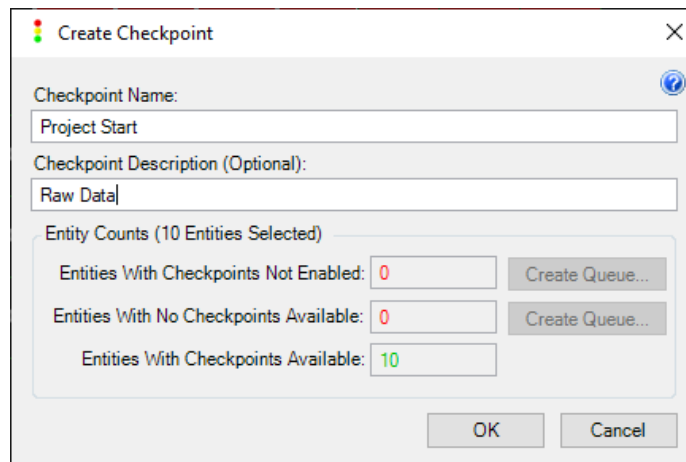


Checkpoints




- To create and manage checkpoints and versions, use the “Version Control” toolbar. Once you select entities within your project, you have these options:



- Create a checkpoint  – This creates a manual version. This can be done at any point in processing. You can set the checkpoint name and description.



It is recommended to rely on these for backup rather than solely on the automatic versions, because those can be somewhat temporary.

- Restore checkpoint  - This allows you to revert to any created checkpoint. If you do revert to a checkpoint, an automatic version will be created, in case you need to go back to the version you were just using. Checkpoints will not be removed or lost, unless this is done manually or the oldest checkpoint is removed due to writing a new checkpoint that exceeds the maximum limit specified by the user.
- Rollback version  - This allows you to rollback to previous automatic versions. Once you rollback to the previous automatic version, your current version will be lost, unless the version you are currently using is a checkpoint.
- Project version tools  - Use this to manage automatic versions and checkpoints.