

## Tools, Tips, and Workflows

# Creating polygons for different elevation ranges

LP360, versions 2019.1.30.0 and above



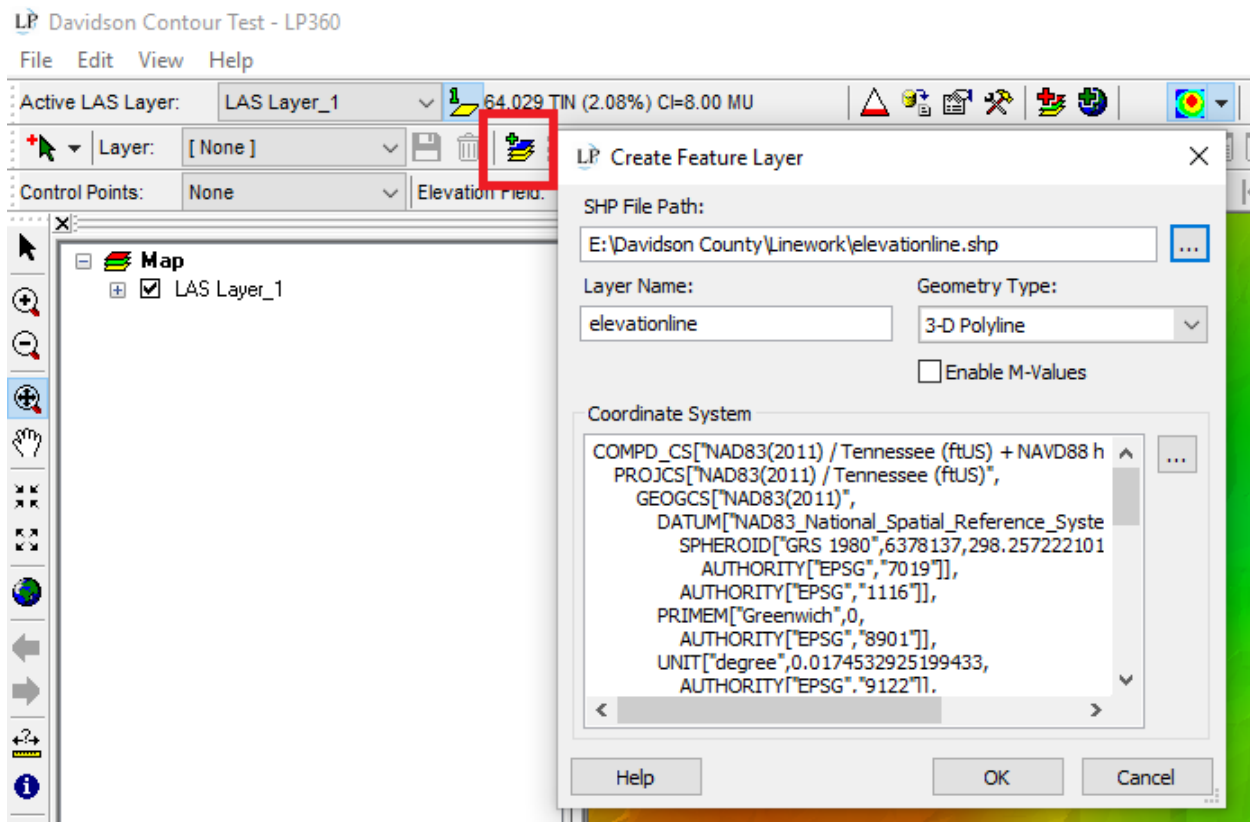
GeoCue Support

9/26/19

Revision 1.0

Summary: The feature edit toolbar in LP360 has a function for that allows the user to create features based on identified features. In this document, we will review a workflow for creating contour features that will represent elevation changes for an area. This could be useful for a flood plain map and other planning purposes. In this example, the ground has already been classified and the display is set to show ground only.

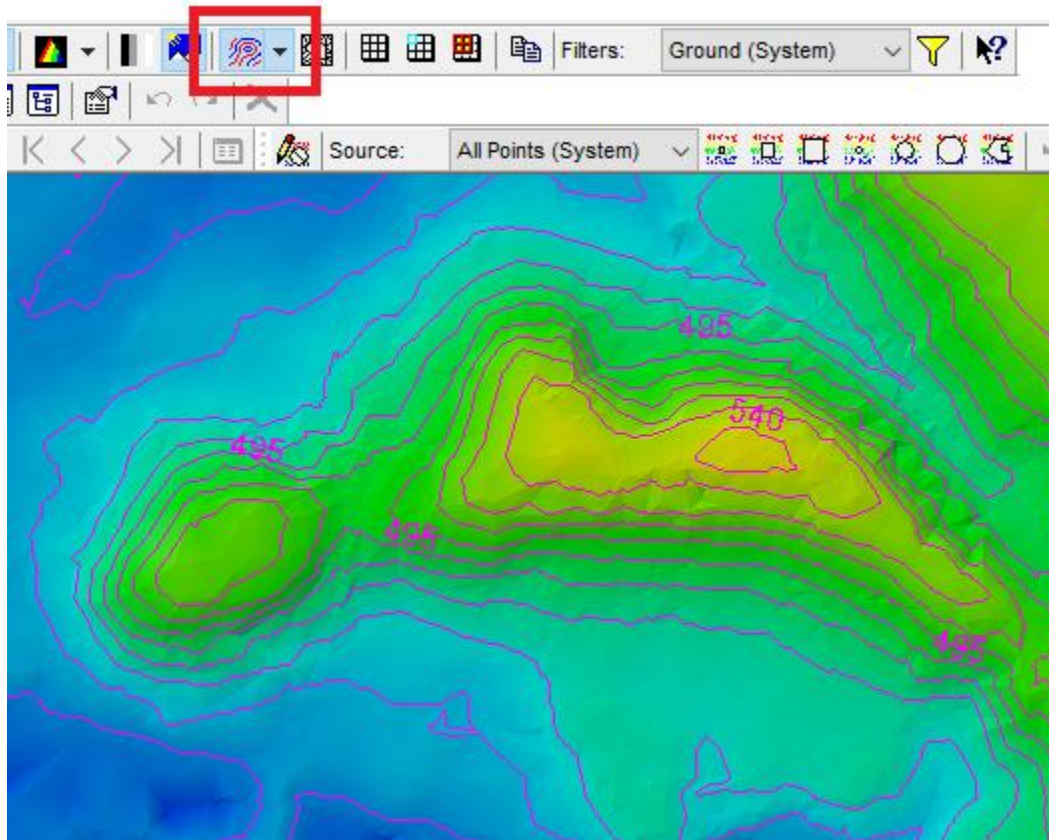
- To start, create a 3-D polyline feature layer in the feature edit toolbar. Name it “elevationline”. Make sure that this is active in the Feature Edit toolbar after creation:



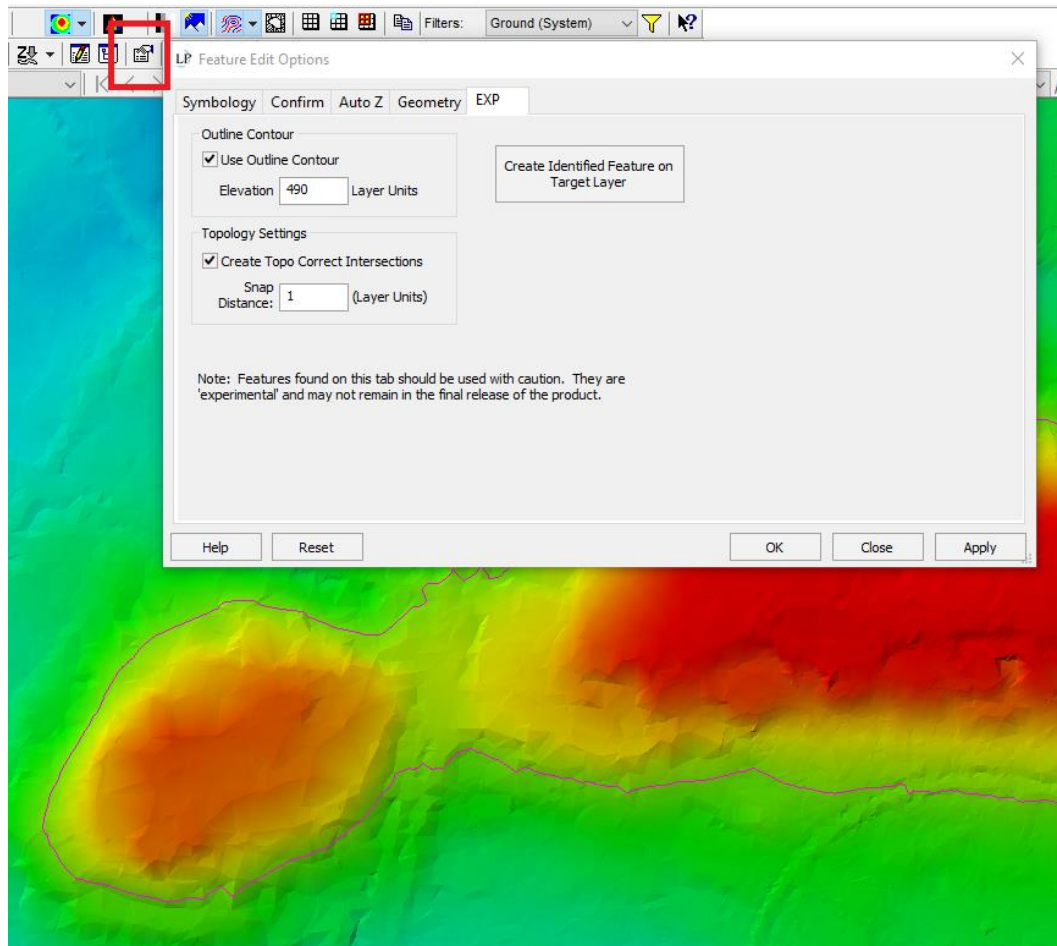
## Tools


# Creating polygons for different elevation ranges

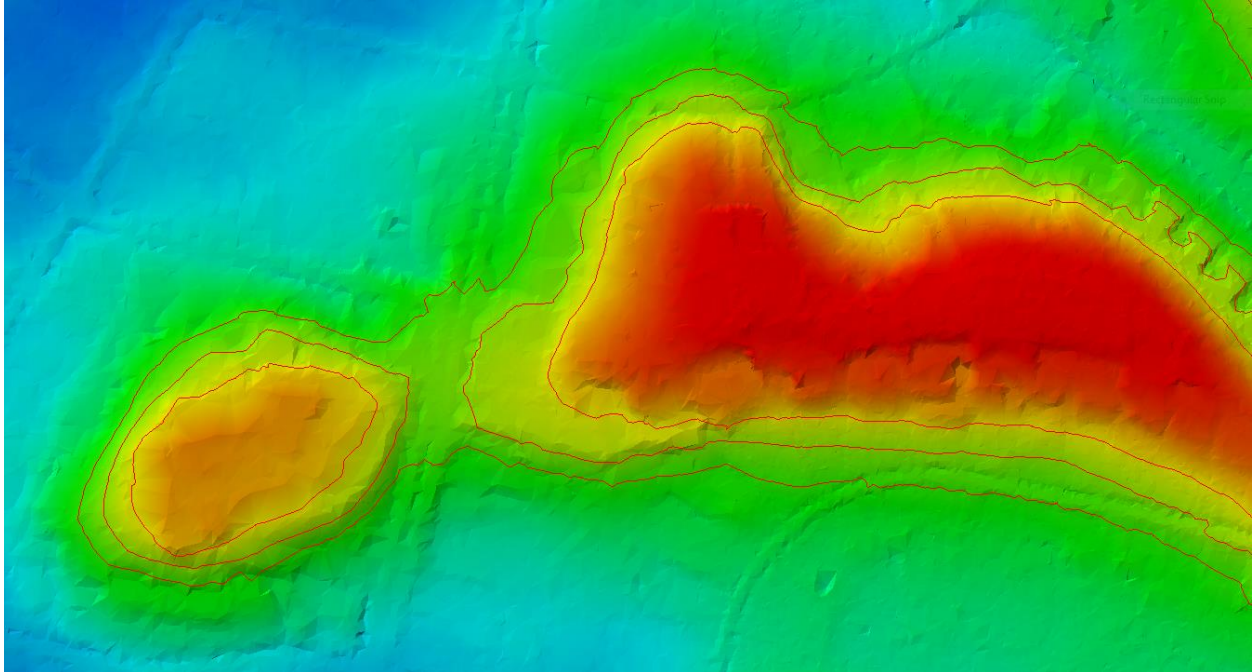
- Display contours:



- Click on the “Feature Edit Option Dialog” and click on the “EXP” tab. Choose an outline contour value that you want to create a feature for. *Note: Features found on this tab should be used with caution. They are ‘experimental’ and may not remain in the final release of the product.* For this example, we will create contour outlines for elevations of 490, 500, 510 feet in elevation. To start, I will choose 490. Click apply, the display should only show the contour for the chosen elevation:



- Click on the identify button  in the LP360 navigation toolbar and click on the displayed contour. Choose the contour in the identify tab. Click on “Create Identified Feature on Target Layer” in the feature edit toolbar and your contour outline feature for the identified contour will be created. Repeat steps for other contours and elevation levels:



- Use feature editing tools to clean up the linework to create polygons. Edit the lines to encircle the individual contours. Make sure that the direction/geometry of the lines are the same and that the enclosed lines are “snapped” together. For more information about feature edit tools, please view this article: <https://support.geocue.com/lp360-new-features/>. To create polygons for these features, create a new 3-D polygon feature and label it “elevationpolygon”. Make sure that this is the new active feature and select the features that you want to convert to polygons. Click on the “Create Features from Selected Features” option. You should now have polygons created from the initial contour outlines.