

Did you know that every State has a State Tree?

## This Arboretum features the State Tree of 20 States!

How many of the 20 state trees can you find?

Find the tree by its number using the map on the next page.

Follow the trail to find the marker stone by the tree.

Each marker has the tree's number, its name and a fun fact.

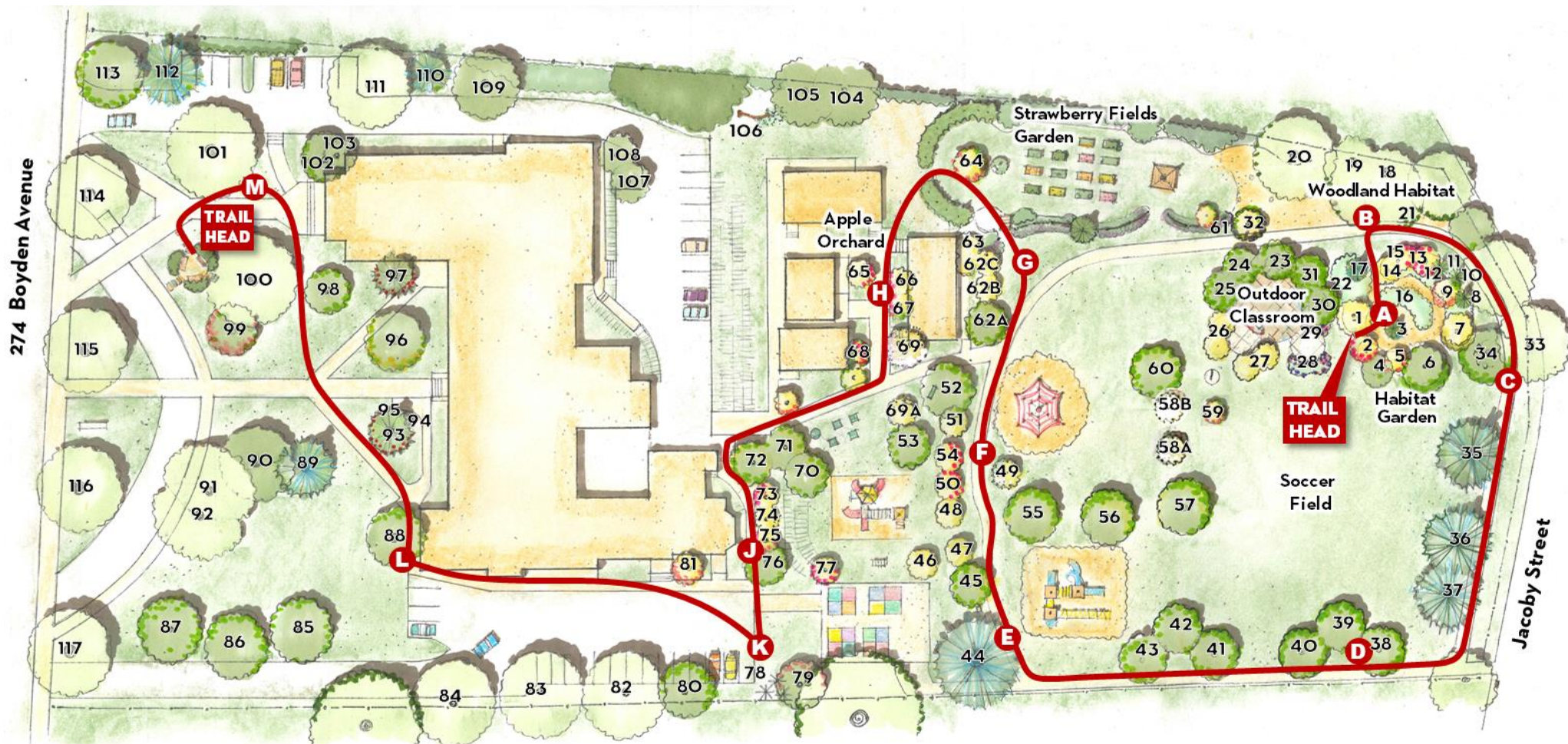
Note: Some of the trees are linked to two or three states.

Tree #	Tree Name	State
#4	White Oak	
#25		
#32		Oklahoma
#37		
#45		
#46		
#48		
#52	Sweetbay Magnolia	
#60		
#65		
#95		
#111		New Jersey

# Seth Boyden Children's Arboretum

274 Boyden Avenue

Maplewood, NJ 07040



The Arboretum is open to visitors after school hours, on weekends and holidays.