



www.thehaw.org

What is the Haw River Trail Partnership?

In 2006, 10 governmental agencies signed a Memorandum of Understanding agreeing to work together for the development of the Haw River Trail and the conservation of its land and waters.

In this spirit, the cities of Burlington and Graham have partnered with Alamance County, to fund a full-time position to coordinate conservation and trail efforts on the Upper Haw River. This newsletter, and our website: www.thehaw.org, are an effort to inform the public about the ongoing work stemming from the 2006 Memorandum of Understanding.

THE MOUTH OF THE HAW

THE NEWSLETTER OF THE HAW RIVER TRAIL PARTNERSHIP

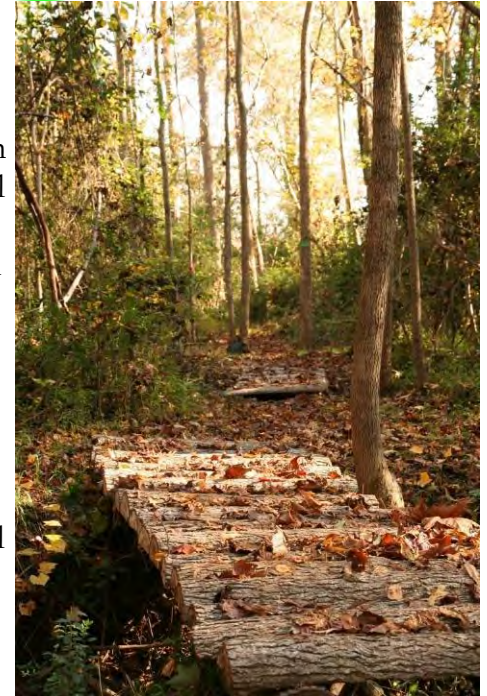
Winter 2009-10

ANOTHER MILE OF TRAIL SET TO OPEN JANUARY 1ST

Bring in the new year with a hike on the newest section of Haw River Trail! A nearly mile-long section of trail from Glencoe Paddle Access to historic Carolina Mill will open January 1st. The trail will connect to the existing trail from Indian Valley Paddle Access to Glencoe Paddle Access, creating the longest continuous stretch of Haw River Trail in Alamance County at approximately 3 miles.

The Carolina Mill segment of trail is made possible by a trail easement acquired in 2008 by the City of Burlington. Burlington acquired the easement in an agreement with Carolina Mill, LLC that extended the Haw River Trail and protected approximately two acres of riverfront on the Haw River via a conservation easement held by the City.

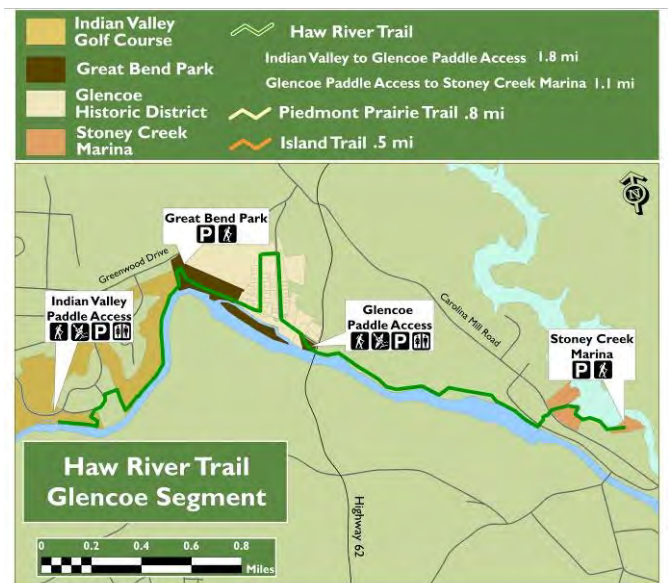
CONTINUED at “Carolina Mill” on page 2



CITY LAKE BAPTIST CHURCH DONATES EASEMENT TO EXTEND HAW RIVER TRAIL

A critical section of the Haw River Trail was secured this month as City Lake Baptist Church donated a trail easement across their property on Burlington’s City Lake, also known as Stoney Creek Lake. The 300 foot long easement provides an important connection between two areas of land already owned by the City of Burlington.

Stoney Creek Marina, owned by the City of Burlington, is planned to serve as the southern terminus for the Glencoe section of Haw River Trail. This section will soon connect Indian Valley Golf Course, Glencoe Mill Village and Carolina Mill to Stoney Creek Marina— a total of approximately 3.5 miles. Renovations to the Stoney Creek Marina are underway to allow parking for trail users during all daylight hours. The renovations are funded in part by an Adopt-A-Trail grant awarded by North Carolina State Trails. The entire segment should be open in 2010.



For questions, comments, or to remove your name from the mailing list, email info@thehaw.org or call 336/229-2229



www.thehaw.org

Give the Haw River Trail For Christmas!

Help us meet our goals and show off your trail-cred at the same time by giving the gift of Haw River Trail merchandise. These items are available online at shop.thehaw.org



YEEEE-HAW!
T-Shirt
\$18.00



HRT Hiking
Stick Medallion
\$5.00



HRT Bumper
Sticker
\$1.00

THE MOUTH OF THE HAW

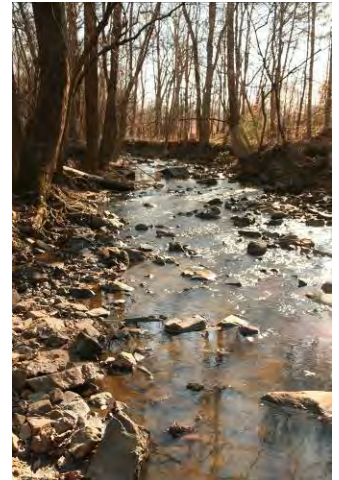
Page 2

DONATIONS SOUGHT TO COMPLETE DEVELOPMENT OF NEW PARK ON GERRINGER MILL ROAD

PLEASE CONSIDER THE HRT IN YOUR END OF YEAR GIVING PLANS

The acquisition of 192 acres on the Haw River earlier this year was an exciting moment for all of us at the Haw River Trail Partnership. The property, located on Gerringer Mill Road near Western Alamance High School, has been a goal of the HRT Partnership since it was identified as a high priority target in the 2006 Haw River Riparian Corridor Conservation Plan. However, acquiring land and making it fit for the public are two entirely different tasks. Although development of the tract has begun, we are more that \$40,000 short of the funds needed to complete the new natural area.

As you plan your end of year giving, please help us complete the park with a donation to the Haw River Trail Partnership. Donations can be made in nearly any amount through our website: thehaw.org. Just click on HRT logo in the "Donate" section. All gifts are tax-deductible. For larger giving amounts or for sponsorship opportunities, please contact Jennie Matkins at 336/229-2379.



Future Park near
Gerringer Mill Road

"Carolina Mill" CONTINUED

This agreement was made possible by the cooperation of Piedmont Land Conservancy, North Carolina Wildlife Habitat Foundation and Carolina Mill, LLC, a subsidiary of Capital Broadcasting Company, Inc. The Haw River Trail Partnership is extremely thankful to those organizations for their willingness to contribute to this project.

After the acquisition of the easements, the trail was constructed by work crews from Dan River Prison Work Farm, staff from Burlington Recreation and Parks, staff from Alamance County Recreation and Parks and the Haw River Trailblazers work crew. Several bridges on the property were also constructed with funds from a Recreational Trails Grant from North Carolina State Trails. This project is a wonderful example of the many people and organizations who work together to make the Haw River Trail a reality. The result is one of the best sections of Haw River Trail on the river and a prime example of the Haw River Trail Partnership's Conservation Through Recreation mission. We look forward to seeing you on the river in the coming months.

HAW RIVER ASSEMBLY PROTECTS HEADWATERS OF THE HAW

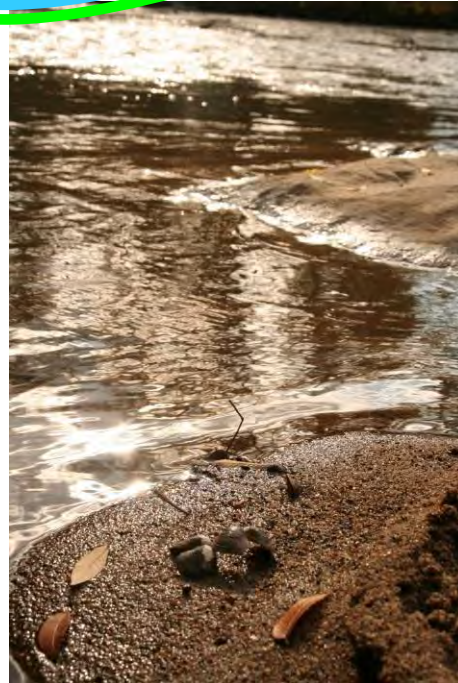
The Haw River Assembly has purchased a two acre tract containing a portion of the headwaters of the Haw River. The property contains approximately 180 feet of stream frontage, including the confluence of two springs that later form the Haw River. Located in north-east Forsyth County, the tract adds to four acres purchased by the HRA in 1999. That property was turned it over to be kept in trust for perpetuity to the Piedmont Land Conservancy. Congratulations to HRA for this accomplishment.



GRANT RECEIVED TO CONSTRUCT PADDLE ACCESS IN SAXAPAHAW

The Alamance County Recreation and Parks, a Haw River Trail Partner, has received a \$75,000 grant from the North Carolina State Trails Recreational Trails Program to construct a new paddle access on the Haw River. The new access will be built in the Saxapahaw community. Saxapahaw has long been one of the most popular paddling sites on the river. The large dam just above the village creates a lake that can be paddled under any conditions, and the trip below the dam provides a beautiful journey along the Alamance/Orange county line. The access will be the southernmost formal access on the Haw River Paddle Trail, which currently extends from Altamahaw in northwest Alamance county, to Swepsonville. This access will extend the Haw River Paddle Trail by nearly six miles. A grant secured in 2008, to build a paddle access on Greensboro-Chapel Hill would extend the trail through the southern portion of the county and into Chatham County.

Plans for the site have not been finalized, but will focus on our primary objectives of safe and legal access for the paddling public. 2009 marks the third consecutive year the HRT Partnership has received an RTP grant. The 2007 grant was used to construct the 15-acre Red Slide Park in the Town of Haw River. Previous RTP grants were used to assist in trail development from Indian Valley to Carolina Mill and to construct Swepsonville River Park.



Haw River in Saxapahaw

SPECIES SPOTLIGHT

HIGHLIGHTING THE NATURAL SPECIES OF THE HAW RIVER BASIN

One of the more unique birds found along the Haw River Corridor is the green heron. The green heron is a small heron with gray-green upperparts and a chestnut-brown head with a green-black cap. The bird winters in the South, and can be seen scouring shorelines and marshlands of the Haw during colder months. Like many humans, the green heron is seasonally monogamous, but tends to wander after the mating season. Most do not travel far, but occasionally some turn up in England and France.

The green heron is one of the few tool-using birds. It commonly drops bait onto the surface of the water and grabs the small fish that are attracted to it. They mainly eat small fish and frogs, but will eat nearly any invertebrate or vertebrate prey they can catch, including animals such as leeches and mice. The birds are normally solitary, so this probably will never really come up, but for trivia purposes, a group of herons may be called a battery, hedge, pose, or scattering of herons.



Green Heron
(*Butorides virescens*)

Visit Us Online

facebook

The Haw River Trail is on Facebook! Click below to "Friend Us" and get updates on news and events.

flickr

To see and share more pictures of the Haw River Trail, visit the Haw River Trail Group on Flickr.com.



www.thehaw.org

Please Send Us Your Trip Reports

For visitors and first-time paddlers on the Haw River Paddle Trail, knowing what water levels are required for each section of the river can be difficult. To help, we are considering placing gauges near the accesses that display proper water levels. We need your help to determine what water levels to recommend. Next time your on the Haw, take a quick minute to tell us what section you paddled, what the water level was (or when you paddled) and whether that level was acceptable. Please email trip reports to info@thehaw.org or call 336/229-2229.

DEVELOPMENT UNDERWAY ON GERRINGER MILL ROAD PROPERTY

The opening of our new natural area on Gerringer Mill Road is still months away, but development has already begun in earnest. In October, the remnants of an old building on the property were removed and a new parking lot was installed on the property. Throughout the winter, trail marking and construction will continue. After construction of bridges, camping areas and paddle accesses, the site should be ready to open by mid-2010. We hope to have a preview hike in the coming months, but if you have ideas or suggestions for the property in the meantime, feel free to drop us a line.



Conceptual plan for Gerringer Mill Road Property

HRT PARTNERSHIP RECEIVES \$5,000 GRANT

Haw River Trail Partner Alamance County Recreation and Parks Department was awarded a \$5,000 grant from the North Carolina State Trails Program last month. The "Adopt-A-Trail" grant program awards \$108,000 annually to government agencies, non-profit organizations and private trail groups for trails projects. The grant will be used to complete construction of the new sections of Haw River Trail between Glencoe Paddle Access and Stoney Creek Marina. The first section, from Glencoe Paddle Access to Carolina Mill, will open January 1st, 2010.

NCDOT AND NC WILDLIFE RESOURCES COMMISSION SIGN MOA TO EXPAND PUBLIC ACCESS

The North Carolina Wildlife Resources Commission and the N.C. Department of Transportation, reached an agreement this fall aimed at creating additional water access areas at bridges throughout the state. The agencies agreed to work cooperatively to identify feasible public recreational access on projects listed in the NCDOT's Transportation Improvement Program (TIP). The agreement will allow the agencies to cooperate in the planning, permitting and right of way purchasing at bridge sites to create angling and boating access for the public.