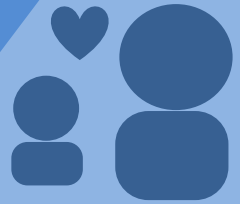


Snapshot of Factsheet 3

From the research project:

“Successful School Experiences for Victorian Students with Cerebral Palsy in Local School Communities”

Inspired and skilled teachers and aides made a substantial difference to students’ access to curriculum, social participation and the whole school



STUDENT & FAMILY

Student and family involvement is crucial for students to become involved and confident learners.

community

Teachers and aides needed training and education through outside agencies like the Cerebral Palsy Education Centre (CPEC).

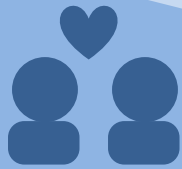


TRAINING & SUPPORT

With training and support, teachers and aides can adapt, modify and tailor the curriculum for students with disabilities.

POSSIBILITY

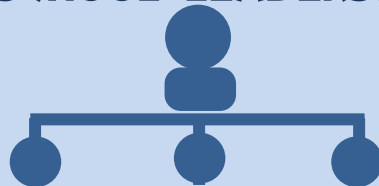
Students with cerebral palsy, physical disabilities and complex communication needs can and do attend local schools.



FAMILIES

Families play a crucial, ongoing and sometimes difficult role in advocating, organising and navigating the school system on behalf of their child.

SCHOOL LEADERSHIP



School leadership is a cornerstone to creating and sustaining whole of school inclusive attitudes that celebrate diversity and difference in the school community.



ALLIED HEALTH

Allied health experts are recognised as useful team members and essential experts.

The
WILLIAM BUCKLAND
FOUNDATION
— W_BF —