

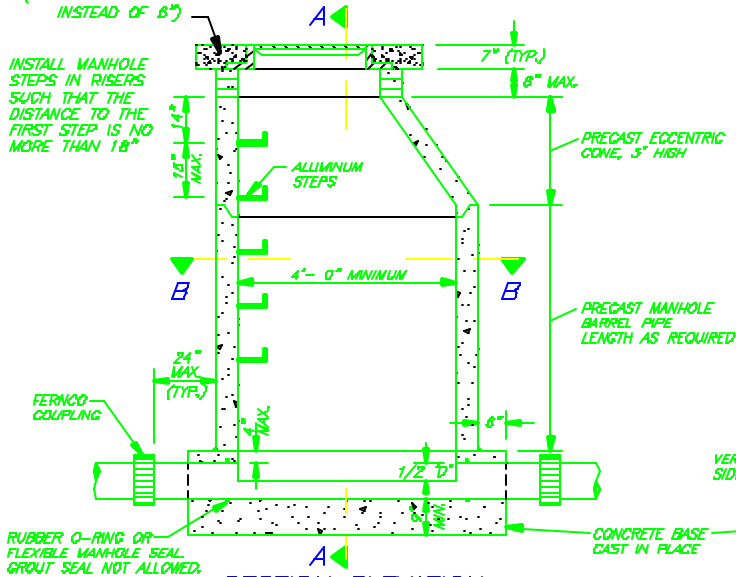
NOTES:

1. All bases shall be cast in place or precast concrete; use #4 rebar on 12" c-c both ways in poured bases.
2. Joint to be located on each side of all manholes, maximum of 24" from inside face.
3. Where available from pipe manufacturer, use expandable water stop or special sleeve as per manufacturer's specifications.
4. Slope to be located on side of bench or over upstream pipe.
5. Use Rub-R-Nek preformed gasket (2 layers) or grout in place between all bottom section, barrel sections, concrete grade rings, and top castings.
6. Backfill within 24" of manhole: Class 6 aggregate or native materials with less than 3" size.
7. Precast rings or metal riser ring course shall be utilized where required with 2 courses minimum and 12 courses maximum (2" minimum, 12" maximum height).
8. Grade adjustment as follows: Greater than, or equal to, 1 foot, concrete barrel sections; less than 1 foot, concrete or metal grade rings.
9. Finish grade as follows: With asphalt or concrete pavements flush with base course surface or dirt/topsoil -3" below grade.

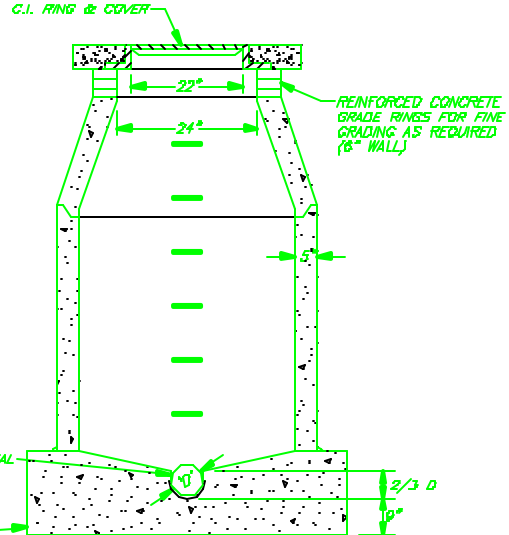
CONCRETE COLLAR PER
DWG: DR-11
(PROVIDE 7" DEPTH
INSTEAD OF 6")

SECTION B - B

INSTALL MANHOLE
STEPS IN RISERS
SUCH THAT THE
DISTANCE TO THE
FIRST STEP IS NO
MORE THAN 18"



SECTION ELEVATION



SECTION A - A

STANDARD MANHOLE DETAIL

N.T.S.

STANDARD SEWER
MANHOLE DETAIL

TOWN OF NEW CASTLE

NOT TO SCALE

DWG: SW-10