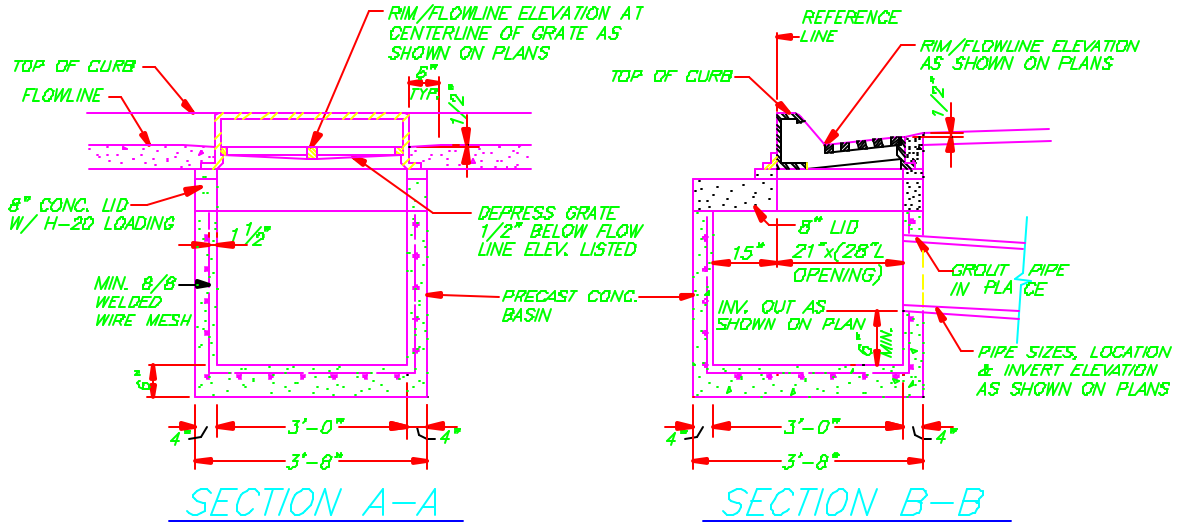


PROVIDE DIAGONAL GRATE INSTALLATION FOR AREAS SUBJECT TO BICYCLE TRAFFIC

NOTES:

- 1) FRAME, GRATE & CURB INLET TO BE NEENAH R-3501-P OR APPROVED EQUAL SEE BELOW.
- 2) DOUBLE INLET FRAME, GRATE & CURB INLET TO BE NEENAH R-3504-F OR APPROVED EQUAL. (ABUTTING SIDE FLANGES TO BE OMITTED TO FORM DOUBLE). THE CONCRETE BASIN FOR THE DOUBLE INLET SHALL BE THE SAME AS SHOWN, EXCEPT THAT THE OVERALL WIDTH OF SECTION A-A SHALL BE 6'-10" RATHER THAN 3'-8".
- 3) FRAME & GRATE SHALL BE ASPHALT PAINT-DIPPED BY MANUFACTURER.
- 4) PRECAST CONCRETE ADJUSTMENT RINGS (IF REQUIRED) SHALL BE GROUTED IN PLACE.
- 5) SET GRATE W/ CONC. LEVELING COURSE TO MATCH LONGITUDINAL SLOPE OF THE ROAD.
- 6) CAST IN PLACE INLET BOXES ARE AN ACCEPTABLE ALTERNATIVE TO PRE-CAST GIVEN WRITTEN APPROVAL FROM TOWN.
- 7) GRATE AND FRAME SPECIFIED ARE FOR MOUNTABLE CURB AND GUTTER INSTALLATIONS. PROVIDE NEENAH R-3227-D CURB INLET FRAME, DIAGONAL GRATE AND CURB BOX FOR VERTICAL CURB INSTALLATIONS.



TYPE I DRAIN INLET DETAIL

NOT TO SCALE

DRAIN INLET TYPE 1	
TOWN OF NEW CASTLE	
NOT TO SCALE	DWG: DR-90